

KETURAH
RESERVE

WELCOME TO KETURAH RESERVE TRANSFORMATIONAL LIVING
THROUGH THE DESIGN OF SPACE

Mohammed Bin Rashid City District 7 (MBR7)
25.2048° N, 55.2708° E

KETURAH RESERVE

BIO LIVING
DESIGN PROCESS

WELCOME TO KETURAH RESERVE

A transformational living through the design of space

Mohammed Bin Rashid City District 7 (MBR7)
25.2048° N, 55.2708° E

KETURAH RESERVE

BIO LIVING
DESIGN PROCESS

THE MEANING OF KETURAH

KETURAH is an Arabic word for the fragrance traditionally diffused throughout the home to welcome guests.



PORTFOLIO

KETURAH RESERVE

BIO LIVING
DESIGN PROCESS

THE BRIEF

keturah Reserve

Meydan

Dubai

Keturah Reserve at Meydan

DESIGN CONCEPT

Naturally Sustainable

The FLOW, Air, Light, Colour, Space

4 Bedroom Rowhouse Superhome

4 Bedroom Back-to-Back Superhome

5 Bedroom Rowhouse Superhome

DESIGN AND TECHNICAL DEVELOPMENT

MEYDAN HOME-OWNER

KETURAH RESERVE'S SERVICES AND AMENITIES

PAYMENT PLAN

CONTACT

Mohammed Bin Rashid City District 7 (MBR7)
25.2048° N, 55.2708° E

KETURAH RESERVE

BIO LIVING
DESIGN PROCESS

THE MESSAGE

"Keturah Reserve is uniquely conceived and designed.

Each detail has been crafted with care to elevate and enrich the lives of every generation of our residents.

Our vision is for Keturah Reserve residents to be the happiest, best fulfilled people in Dubai."

Talal M. Al Gaddah
Founder and CEO

Mohammed Bin Rashid City District 7 (MBR7)
25.2048° N, 55.2708° E

KETURAH RESERVE

BIO LIVING
DESIGN PROCESS



All room sizes and floor plans measurements are approximate and may vary per unit. Floor plans and unit features are preliminary and proposed only. Developer reserves the right to modify, revise, change or withdraw any or all of same in its sole and absolute discretion and without prior notice. Depictions of furnishings, finishes, appliances, counters, soffits, floor coverings and other matters of detail, including, without limitation, items of finish and decoration are conceptual only and are not necessarily included in each Unit. Consult your Agreement and the Prospectus for items included with your Unit.

KETURAH
GYM
GROCERY
APARTMENT
LOBBY ENTRANCE
MEDITATION
BUSINESS AREA
SPA
YOGA

THE BRIEF

Dubai is the capital of innovation, one of the most dynamic and exciting cities in the world.

Equally, Keturah Reserve at Meydan is the most innovative and exciting New Luxury development in Dubai, with a brand-new concept, transformational living through the design of space.



All room sizes and floor plans measurements are approximate and may vary per unit. Floor plans and unit features are preliminary and proposed only. Developer reserves the right to modify, revise, change or withdraw any or all of same in its sole and absolute discretion and without any obligation. All furnishings, finishes, appliances, counters, sinks, floor coverings and other matter of detail, including, without limitation, items of finish and decoration are conceptual only and are not necessarily included in each Unit. Consult your Agreement and the Prospectus and the Prospectus Supplement for more information.

KETURAH RESERVE, NEW LUXURY

New Luxury is raw and silent. It elevates and empowers, evoking the profound emotional well-being of mind and body through the design of interior, exterior and personal space. It connects residents with the surrounding nature through Bio Living.



All room sizes and floor plans measurements are approximate and may vary per unit. Floor plans and unit features are preliminary and proposed only. Developer reserves the right to modify, revise, change or withdraw any or all of same in its sole and absolute discretion and without prior notice. Depictions of furnishings, finishes, appliances, counters, soffits, floor coverings and other matters of detail, including, without limitation, items of finish and decoration are conceptual only and are not necessarily included in each Unit. Consult your Agreement and the Prospectus for items included with your Unit.

BIO LIVING AT KETURAH RESERVE

Bio Living is inspired by Biophilic Design, the concept of creating architecture and interiors to enable residents to connect with the surrounding nature. All five human senses are engaged by nature, improving physical and mental well-being and adding real value to residents' lives. Bio Living respects all life forms, flora, fauna and human.

Mohammed Bin Rashid City District 7 (MBR7)
25.2048° N, 55.2708° E



KETURAH RESERVE

BIO LIVING
DESIGN PROCESS



DESIGNED FROM THE INSIDE OUT

We spend 90% of our lives indoors.
It is where we reconnect with our emotions and our inner self.

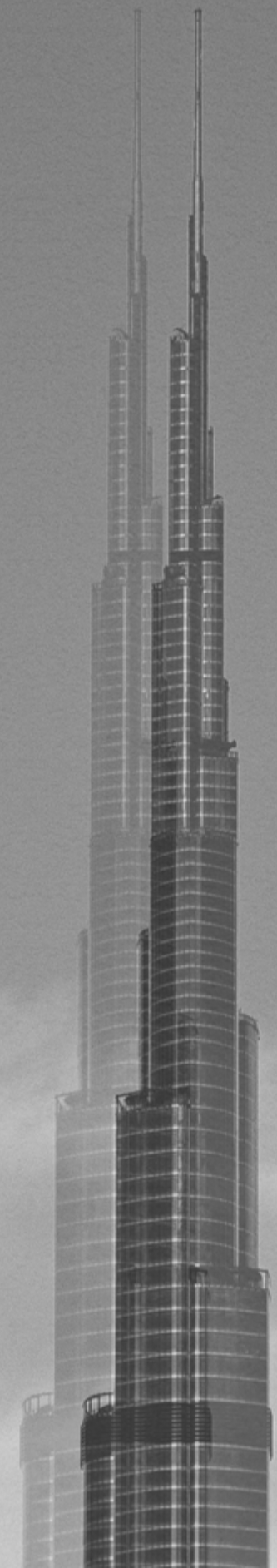
Keturah Reserve SuperHomes are uniquely conceived and designed from the inside out using contemporary architectural principles of the five elements, proportions, ratio and daylight, in raw and natural materials to create harmony in space.

All room sizes and floor plans measurements are approximate and may vary per unit. Floor plans and unit features are preliminary and proposed only. Developer reserves the right to modify, revise, change or withdraw any or all of same in its sole and absolute discretion and without prior notice. Depictions of furnishings, finishes, appliances, counters, soffits, floor coverings and other matters of detail, including, without limitation, items of finish and decoration are conceptual only and are not necessarily included in each Unit. Consult your Agreement and the Prospectus for items included with your Unit.

WHY DUBAI?

Dubai is the City of the Future, one of the most exciting, inspirational and successful cities in the world, the global headquarters of crypto currency in DMCC.

Its thriving expat community of over 200 nationalities comprises 80% of the population. Dubai is a pioneer for future urban living with sustainable development an integral part of its Green 2040 Vision.

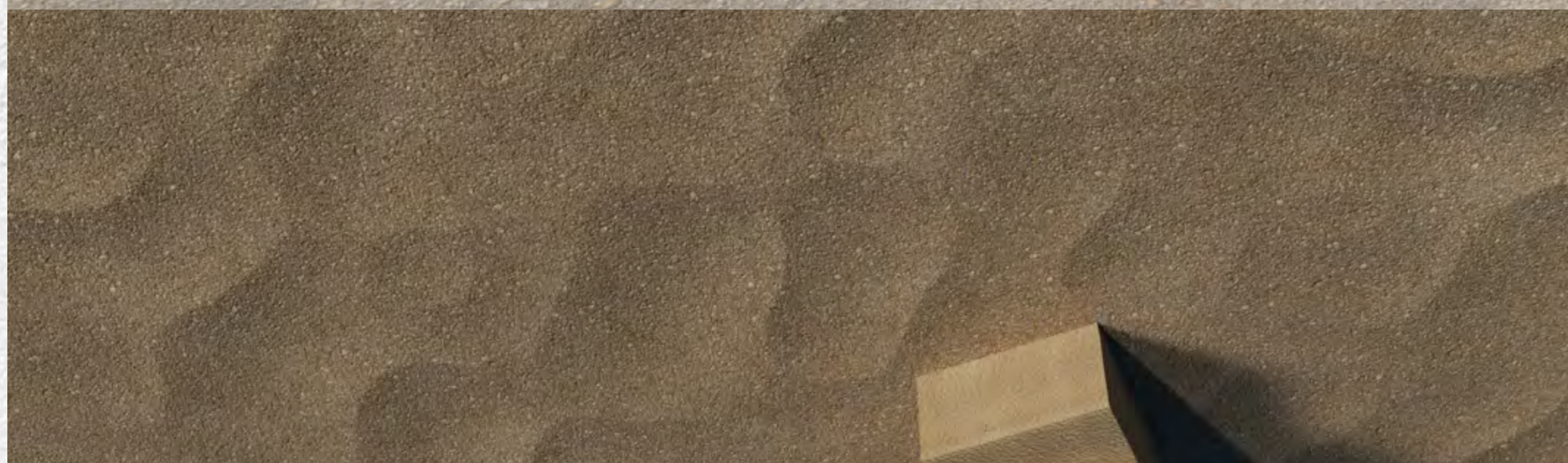
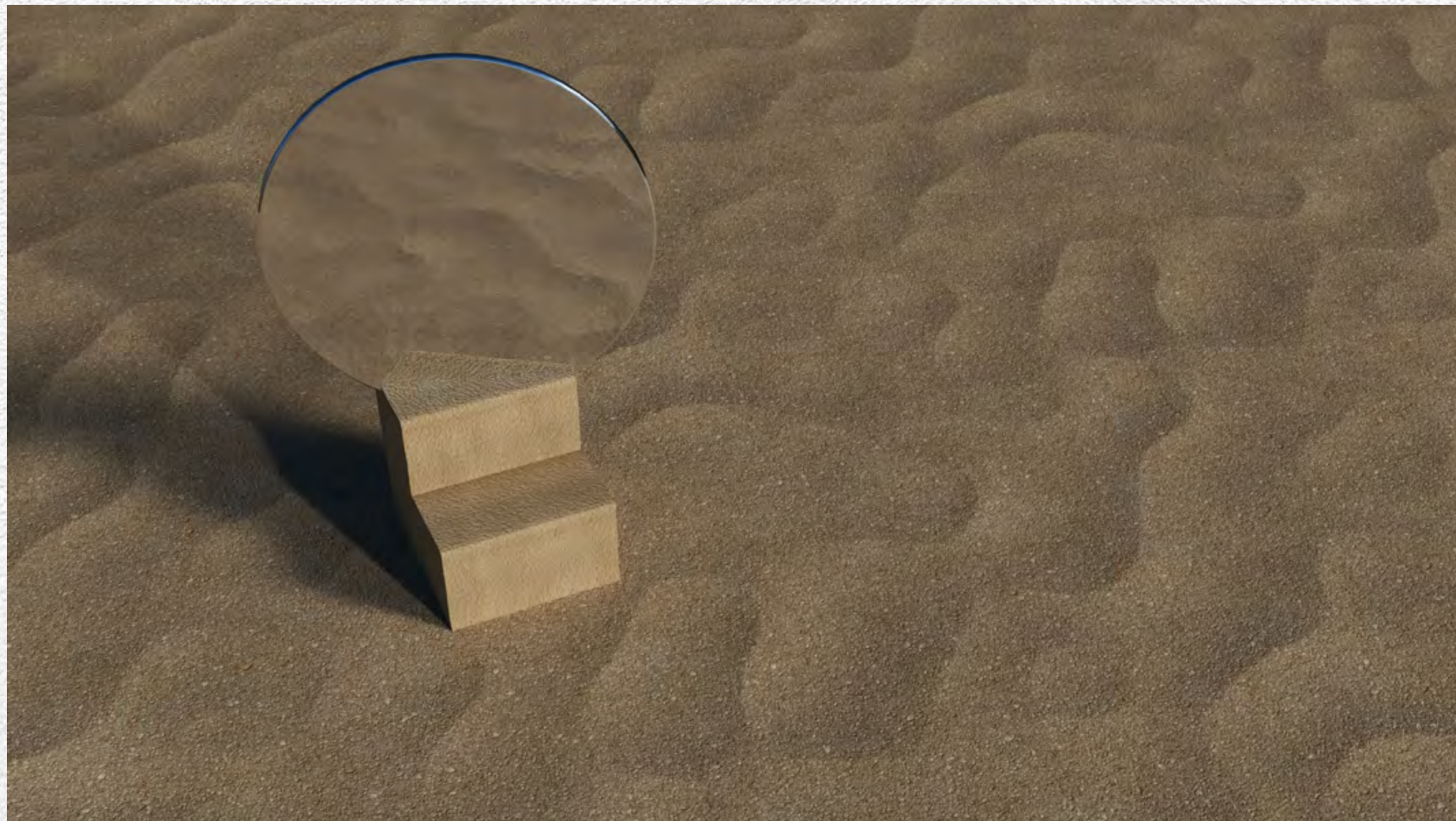


THE MEYDAN STORY

Meydan is an Arabic word for an open, urban space for public discussion that traces its origin to the Ottoman Empire.

Keturah Reserve at Meydan is one of Dubai's most exclusive addresses. Meydan is a new sustainable and environmentally friendly development owned by His Highness Sheikh Mohammed bin Rashid Al Maktoum.

It encloses the world-renowned Meydan Racecourse and Grandstand, home of the Dubai World Cup horse racing event.



KETURAH RESERVE AT MEYDAN

Keturah Reserve is uniquely located at Meydan, the only residential development in Dubai with a direct 7-minute link to Downtown, with four separate exits onto the city's main thoroughfares.

1. KETURAH RESERVE BY MAG
2. MAG LOGISTICS
3. MAG 318
4. BURJ KHALIFA
5. DUBAI WATER CANAL
6. MEYDAN ONE MALL
7. MEYDAN GRANDSTAND
8. MEYDAN GOLF COURSE
9. EMIRATES FINANCIAL TOWERS BY MAG
10. DUBAI DESIGN DISTRICT
11. DUBAI SANCTUARY
12. AL AIN / DUBAI HIGHWAY
13. AL KHAIL HIGHWAY
14. AL MEYDAN ROAD
15. SHEIKH ZAYED ROAD
16. ETIHAD RAIL MAIN STATION



ACCESSIBILITY

- Dubai International Airport, 21 minutes
- Downtown, 7 minutes
- DIFC Financial Center, 12 minutes
- Business Bay, 15 minutes
- Dubai Design District, 15 minutes
- The Beach, 20 minutes
- Blue Waters, 30 minutes

ART AND CULTURE

- Museum of The Future, 20 minutes
- Dubai Public Library, 25 minutes
- OliOli® - Experiential Play Museum for Kids, 20 minutes
- Butterfly Garden, 30 minutes
- Alserkal Avenue, 20 minutes

MALLS

- Dubai Mall, 20 minutes
- Dubai Hills Mall, 15 minutes
- Meydan One Mall, 15 minutes

EDUCATION

- Gems-Willington-Private School, 17 minutes
- The English College, 15 minutes
- Dubai International Private School, 17 minutes
- Hartland International School Dubai, 16 minutes
- Swiss International Scientific School, 15 minutes

HEALTHCARE

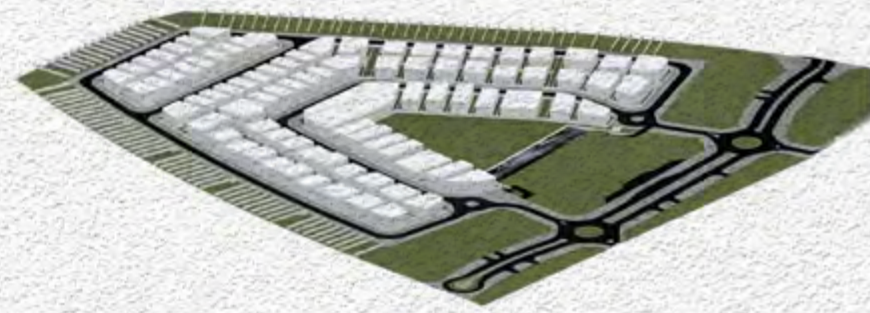
- Medcare Hospital, 15 minutes
- Emirates Hosp. Clinics, 17 minutes
- Mediclinic City Hospital, 19 minutes
- American Hospital Dubai, 19 minutes
- King's College Hospital, 9 minutes

GOLF CLUBS

- Meydan Golf, 10 minutes
- Dubai Hills Golf Club, 15 minutes
- Emirates Golf Club, 24 minutes



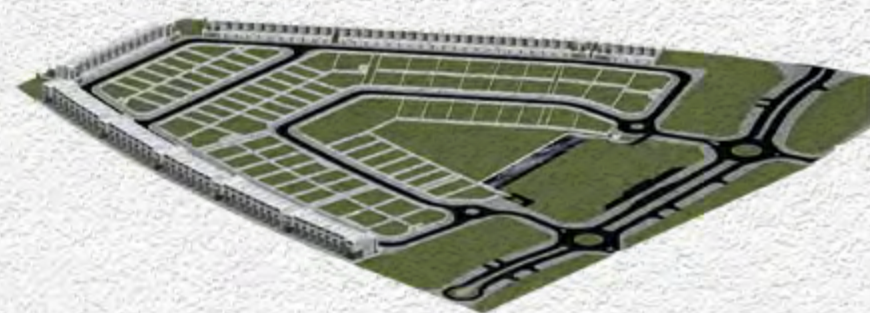
KETURAH RESERVE



VILLA PLOTS



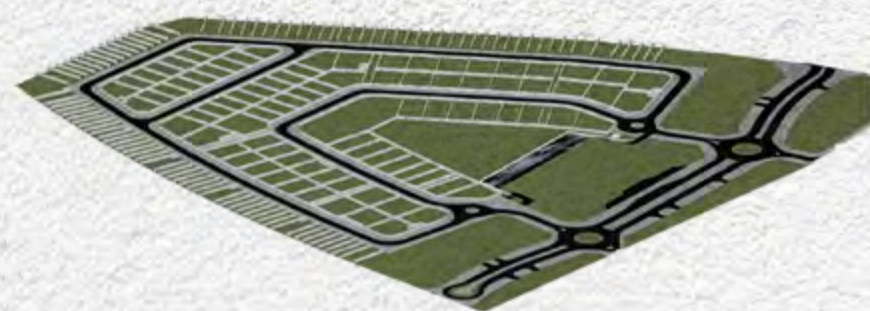
AMENITIES



TOWNHOUSES



RESIDENCES



DESIGNED FOR EVERY GENERATION

Every resident, women, men and children of all ages will find their perfect niche in Keturah Reserve.



SPORTS

- GYM
- Swimming
- Squash
- Padel Tennis

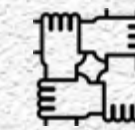


FOOD & BEVERAGE

- Restaurants
- Kiosks
- Juice Bars

DESIGNED FOR ALL LIFE SPECIES

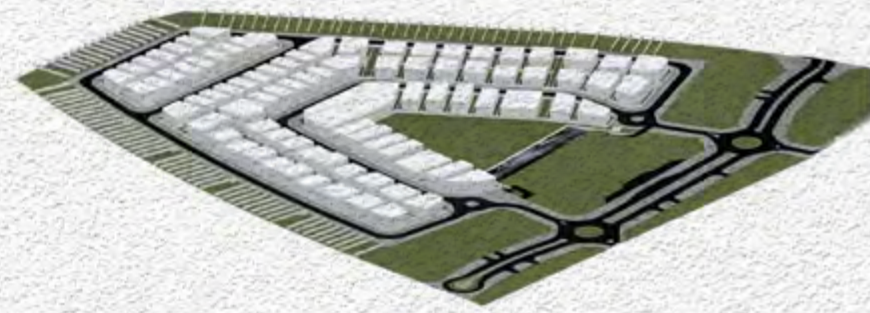
Keturah Reserve is landscaped with indigenous trees and plants that need little water to thrive in the local climate, attracting birds, animals and insects.



SUPPLEMENTARY SERVICES

- Family & Kids Pool
- Ladies Pool
- Sauna & SPA
- Family Lounges
- Clinic
- Kids Area
- Green Areas
- Co-Working Stations
- Gaming Rooms & VR Areas

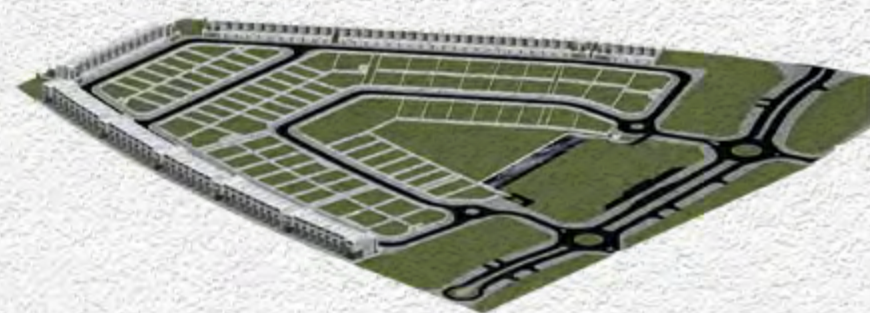
KETURAH RESERVE



VILLA PLOTS



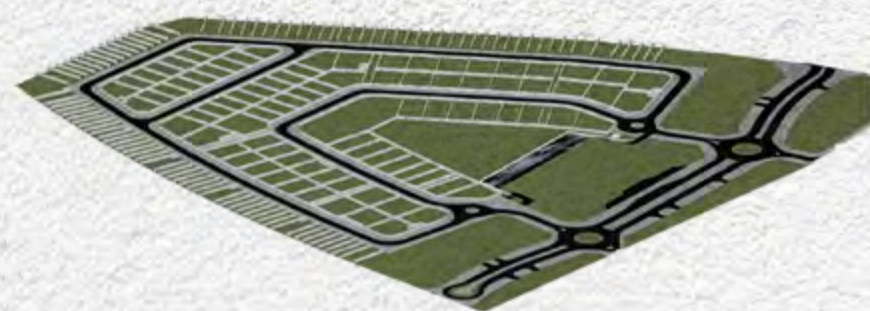
AMENITIES



TOWNHOUSES



RESIDENCES



SUPERHOMES

4-Bedroom Superhome

3-storey with lift, double car park, outdoor pool, terrace with seating area and roof deck

Prototype		Nos.
Row House	Regular	73 Units
	Corner	10 Units

5-Bedroom Superhome

3-storey with lift, double car park, outdoor pool, terrace with seating area and roof deck

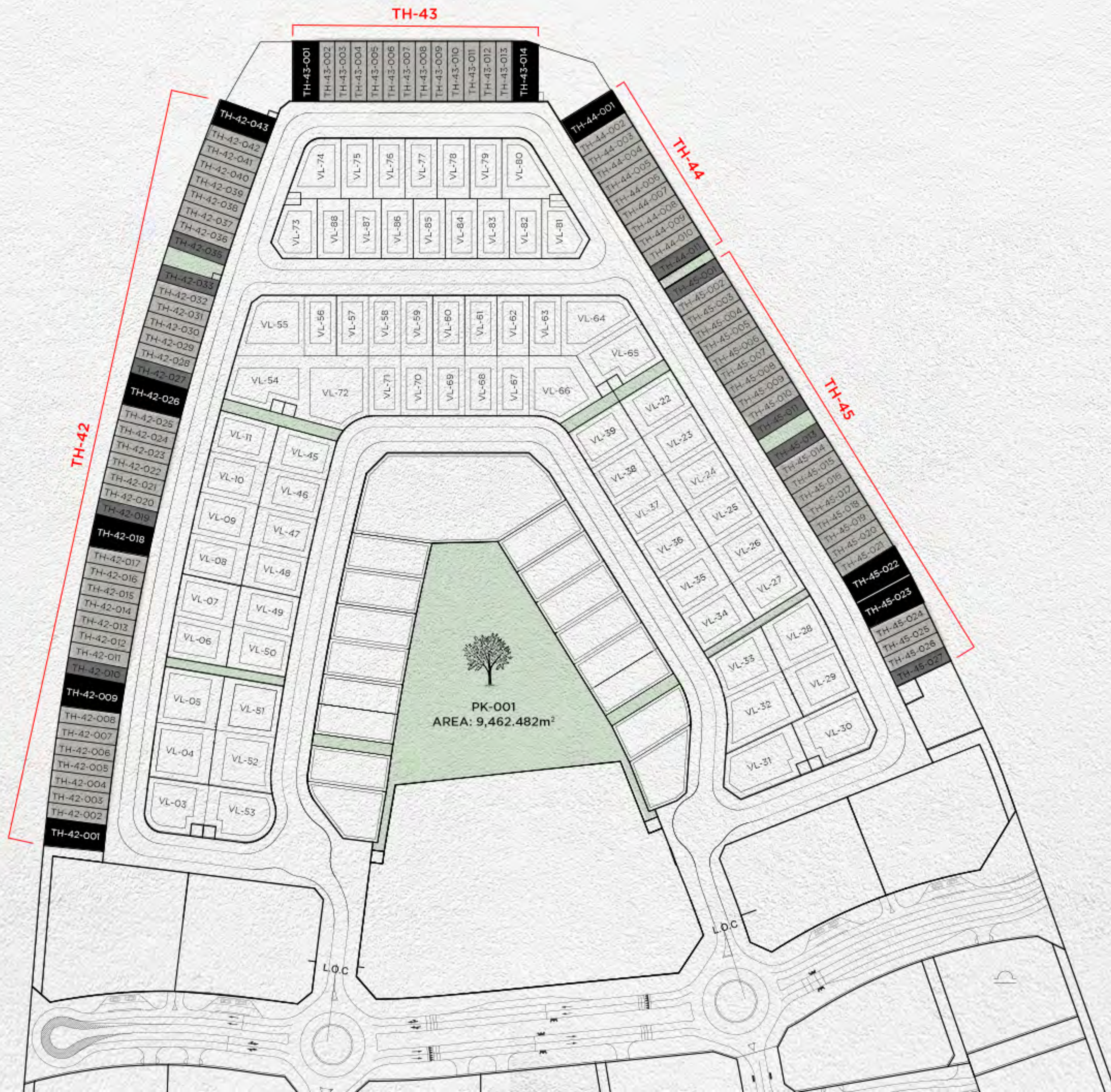
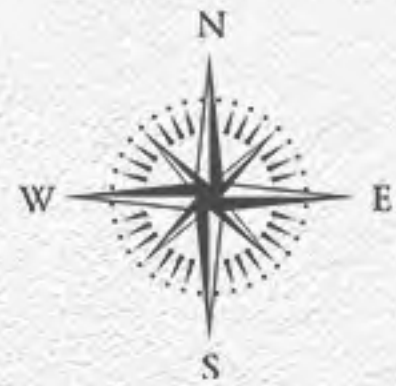
Prototype	Nos.
Row House	10 Units





VILLA Plots

Prototype	Nos.
Plots designated for signature villas	71

APARTMENTS

Prototype		Nos.
1-Bedroom Unit	Dubai Skyline View	96 Units
1-Bedroom Unit	Back Side View	144 Units
2-Bedroom Unit	Corner	112 Units
2-Bedroom Unit	Regular	172 Units
3-Bedroom Unit	Regular	16 Units
4-Bedroom Unit	Regular	8 Units
Total		548 Units



-  73 Units 4 BHK Superhome - Regular
-  10 Units 4 BHK Superhome - Corner
-  10 Units 5 BHK Superhome
-  71 Villas Villa Plots

TH-43

TH-44

TH-45

TH-42

PK-001
AREA: 9,462.482m²

My Space, My Mind.





KETURAH
GYM
GROCERY
APARTMENT
LOBBY ENTRANCE
MEDITATION
BUSINESS AREA
MEDITATION
BUSINESS AREA
SPA
YOGA

All room sizes and floor plans measurements are approximate and may vary per unit. Floor plans and unit features are preliminary and proposed only. Developer reserves the right to modify, revise, change or withdraw any or all of same in its sole and absolute discretion and without prior notice. Depictions of furnishings, finishes, appliances, counters, soffits, floor coverings and other matters of detail, including, without limitation, items of finish and decoration are conceptual only and are not necessarily included in each Unit. Consult your Agreement and the Prospectus for items included with your Unit.



All room sizes and floor plans measurements are approximate and may vary per unit. Floor plans and unit features are preliminary and proposed only. Developer reserves the right to modify, revise, change or withdraw any or all of same in its sole and absolute discretion and without prior notice. Depictions of furnishings, finishes, appliances, counters, soffits, floor coverings and other matters of detail, including, without limitation, items of finish and decoration are conceptual only and are not necessarily included in each Unit. Consult your Agreement and the Prospectus for items included with your Unit.



All room sizes and floor plans measurements are approximate and may vary per unit. Floor plans and unit features are preliminary and proposed only. Developer reserves the right to modify, revise, change or withdraw any or all of same in its sole and absolute discretion and without prior notice. Depictions of furnishings, finishes, appliances, counters, soffits, floor coverings and other matters of detail, including, without limitation, items of finish and decoration are conceptual only and are not necessarily included in each Unit. Consult your Agreement and the Prospectus for items included with your Unit.

All room sizes and floor plans measurements are approximate and may vary per unit. Floor plans and unit features are preliminary and proposed only. Developer reserves the right to modify, revise, change or withdraw any or all of same in its sole and absolute discretion and without prior notice. Depictions of furnishings, finishes, appliances, counters, soffits, floor coverings and other matters of detail, including, without limitation, items of finish and decoration are conceptual only and are not necessarily included in each Unit. Consult your Agreement and the Prospectus for items included with your Unit.



MEDITATION SPACE

Throughout Keturah Reserve,
inside is linked to outside through nature, visible at every vista.

Mohammed Bin Rashid City District 7 (MBR7)
25.2048° N, 55.2708° E

KETURAH RESERVE

BIO LIVING
DESIGN PROCESS

All room sizes and floor plans measurements are approximate and may vary per unit. Floor plans and unit features are preliminary and proposed only. Developer reserves the right to modify, revise, change or withdraw any or all of same in its sole and absolute discretion and without prior notice. Depictions of furnishings, finishes, appliances, counters, soffits, floor coverings and other matters of detail, including, without limitation, items of finish and decoration are conceptual only and are not necessarily included in each Unit. Consult your Agreement and the Prospectus for items included with your Unit.

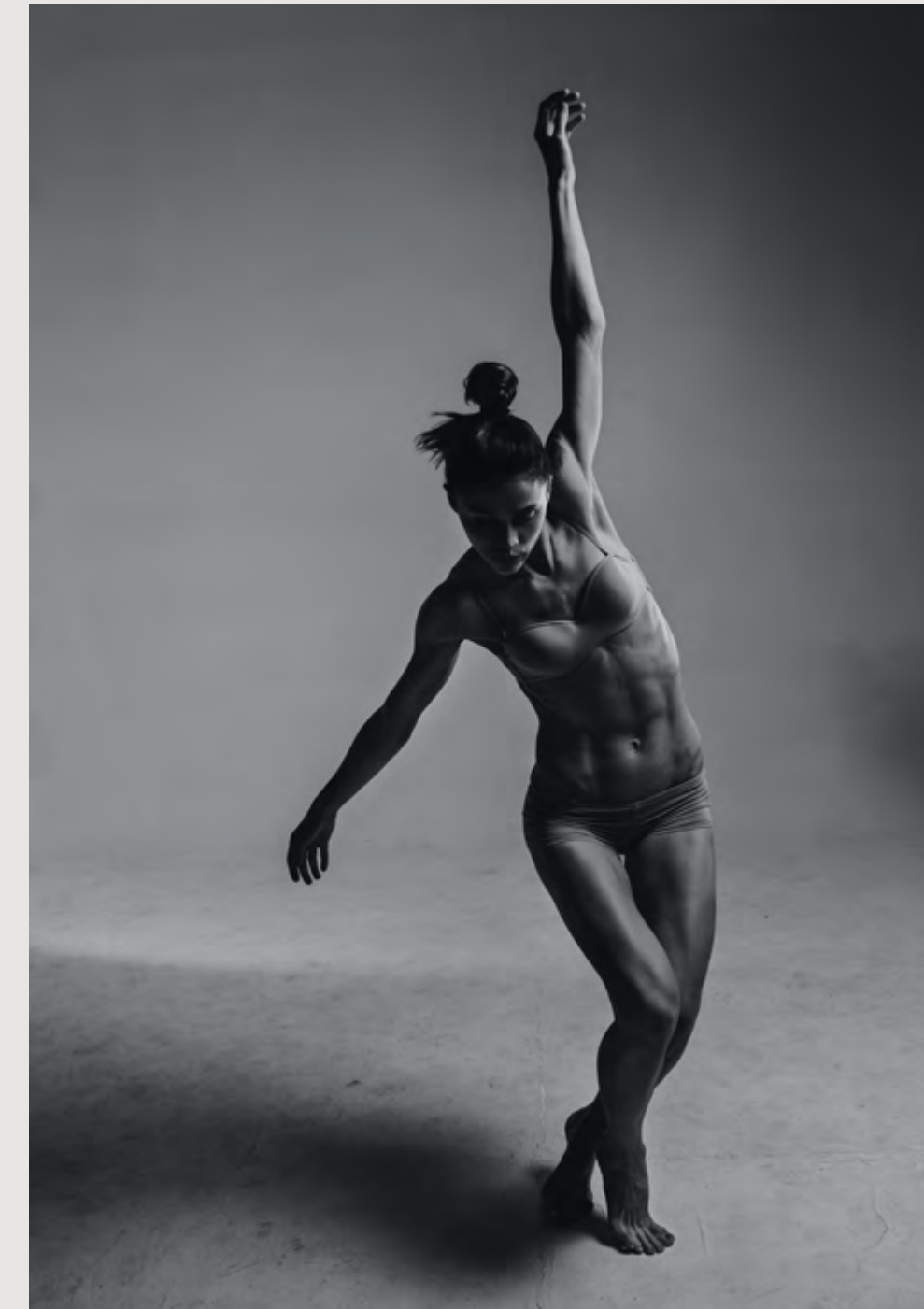


WELL-BEING

- Water Bike Pool
- Indoor Invigorate Space gym with oxygen tunnel entryway
- Outdoor Invigorate Space gym



All room sizes and floor plans measurements are approximate and may vary per unit. Floor plans and unit features are preliminary and proposed only. Developer reserves the right to modify, revise, change or withdraw any or all of same in its sole and absolute discretion and without prior notice. Depictions of furnishings, finishes, appliances, counters, soffits, floor coverings and other matters of detail, including, without limitation, items of finish and decoration are conceptual only and are not necessarily included in each Unit. Consult your Agreement and the Prospectus for items included with your Unit.



WELL-BEING

- Indoor Zen Space for mediation
- Yoga
- Silk Rope Classes
- Sound Healing
- Mother and Baby classes
- Dance Studio



COMMUNAL SPECIAL EVENTS SPACE

Special events with seating
and fully equipped kitchen.

Mohammed Bin Rashid City District 7 (MBR7)
25.2048° N, 55.2708° E

KETURAH RESERVE

BIO LIVING
DESIGN PROCESS

My Space, My Mind



Mohammed Bin Rashid City District 7 (MBR7)
25.2048° N, 55.2708° E

RETURN TO RESERVE

BIO-HYPER
DESIGN RE-C

All room sizes and floor plans measurements are approximate and may vary per unit. Floor plans and unit features are preliminary and proposed only. Developer reserves the right to modify, revise, change or withdraw any or all of same in its sole and absolute discretion and without prior notice. Depictions of furnishings, finishes, appliances, counters, soffits, floor coverings and other matters of detail, including, without limitation, items of finish and decoration are conceptual only and are not necessarily included in each Unit. Consult your Agreement and the Prospectus for items included with your Unit.

BUSINESS CENTRE

The naturally lit 24-hour Business Centre is equipped with ergonomic seating and a circular reference library.



My Space, My Mind.

- Spa, Hair and Beauty Salon for Women
- Spa and Hair Salon for Men



Mohammed Bin Rashid City District 7 (MBR7)
25.2048° N, 55.2708° E

KETURAH RESERVE

BIO LIVING
DESIGN PROCESS

My Space, My Mind.

Keturah Reserve understands the care and value that goes into choosing a home that can grow and fit with all the needs of generations to come.

Mohammed Bin Rashid City District 7 (MBR7)
25.2048° N, 55.2708° E

KETURAH RESERVE

BIO LIVING
DESIGN PROCESS

KID'S PLAY SPACE

The Kids' Play Space with textile playground sculptures by the award-winning artist, Toshiko MacAdam.

KID'S PLAY SPACE

- Shaded organic kids' pool and play area
- Playground for babies and toddlers
- Playground for 7- to 14-year-olds
- Kids Bio Living Farm



Keturah Reserve integrates technology for accelerated learning of the younger generations.



ELEVATION OF THE SUPERHOME

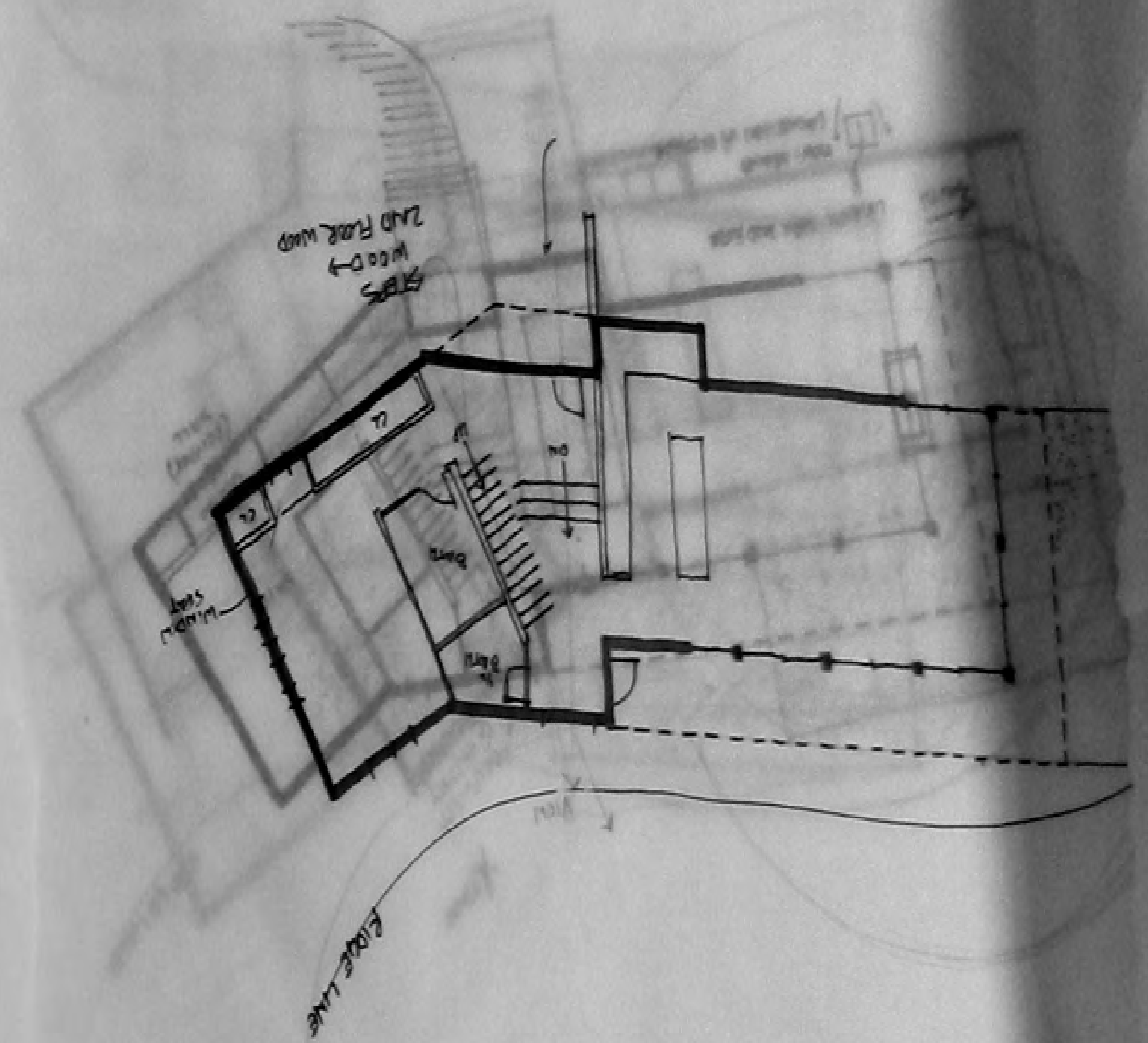
Each three-storey superhome is composed of two distinct parts,
the communal space in front, the private space behind.
A passerelle connects the two.

The roof deck has an outdoor pool, terrace, barbeque with seating
and storage area.

9

12

19

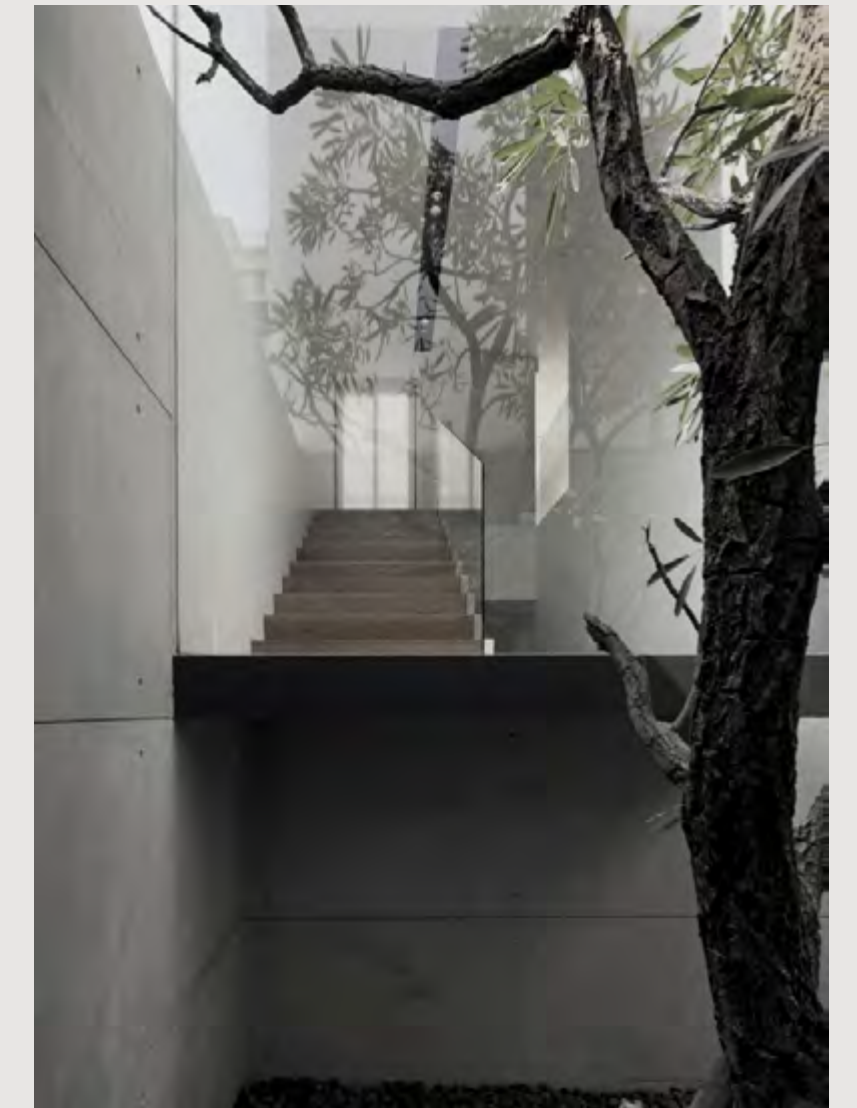




FAÇADE DESIGN

KETURAH RESERVE

BIO LIVING
DESIGN PROCESS



Mohammed Bin Rashid City District
25.2048° N, 55.2708° E



KETURAH RESERVE

BIO LIVING
DESIGN PROCESS



Mohammed Bin Rashid City District (MBC7)
25.2048° N, 55.2708° E



KETURAH RESERVE

BIO LIVING
DESIGN PROCESS

FAÇADE DESIGN



All room sizes and floor plans measurements are approximate and may vary per unit. Floor plans and unit features are preliminary and proposed only. Developer reserves the right to modify, revise, change or withdraw any or all of same in its sole and absolute discretion and without prior notice. Depictions of furnishings, finishes, appliances, counters, soffits, floor coverings and other matters of detail, including, without limitation, items of finish and decoration are conceptual only and are not necessarily included in each Unit. Consult your Agreement and the Prospectus for items included with your Unit.

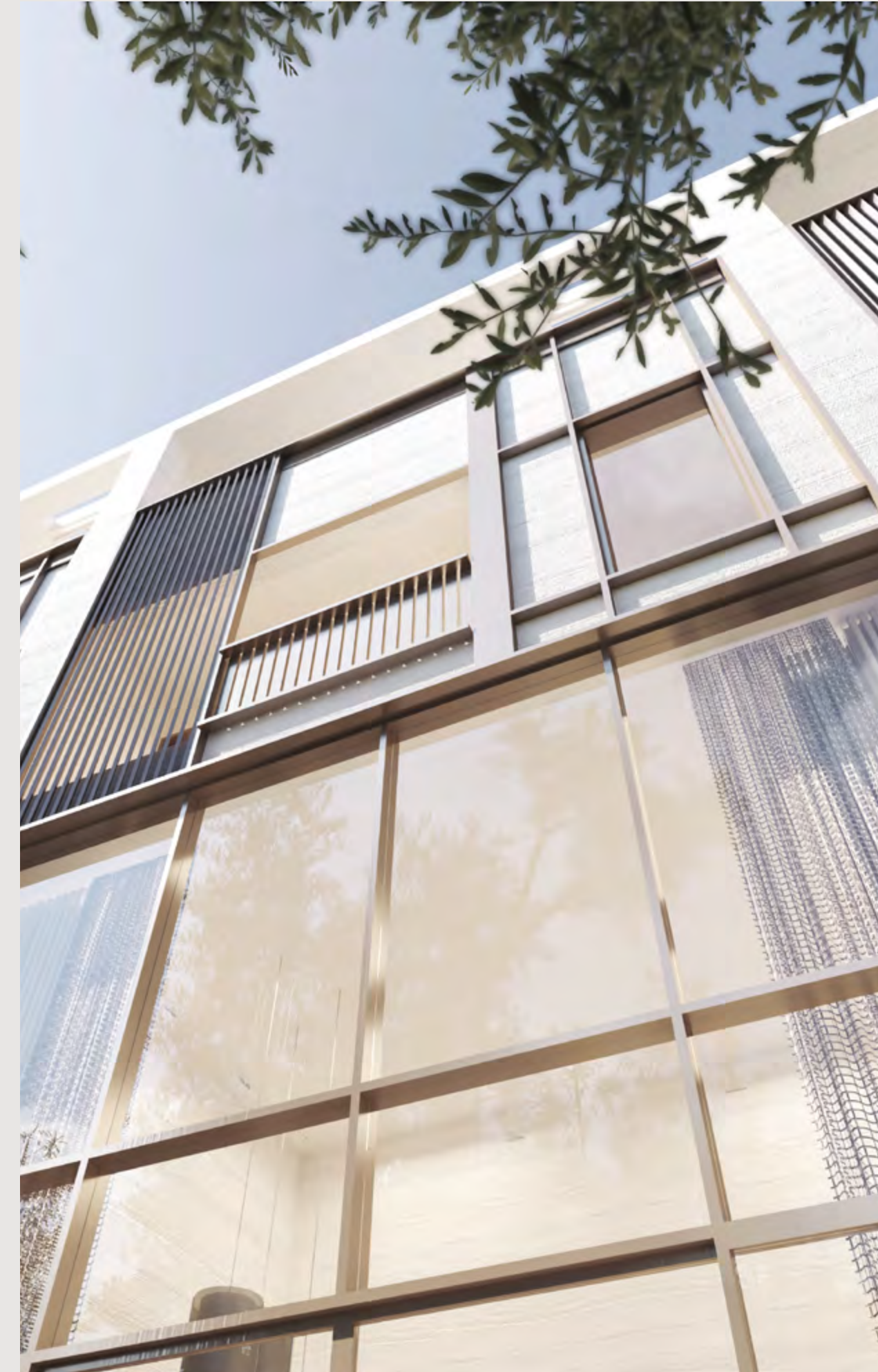
Mohammed Bin Rashid City District 7 (MBR7)
25.2048° N, 55.2708° E



KETURAH RESERVE

BIO LIVING
DESIGN PROCESS

FAÇADE DESIGN



All room sizes and floor plans measurements are approximate and may vary per unit. Floor plans and unit features are preliminary and proposed only. Developer reserves the right to modify, revise, change or withdraw any or all of same in its sole and absolute discretion and without prior notice. Depictions of furnishings, finishes, appliances, counters, soffits, floor coverings and other matters of detail, including, without limitation, items of finish and decoration are conceptual only and are not necessarily included in each Unit. Consult your Agreement and the Prospectus for items included with your Unit.

The rooftop with outdoor seating offers a view over the clear, blue Meydan sky, a place to breathe. The double volume, ceiling height and wall thickness are designed to cool the interior spaces naturally, minimizing the need for air conditioning.

ROOF GARDEN

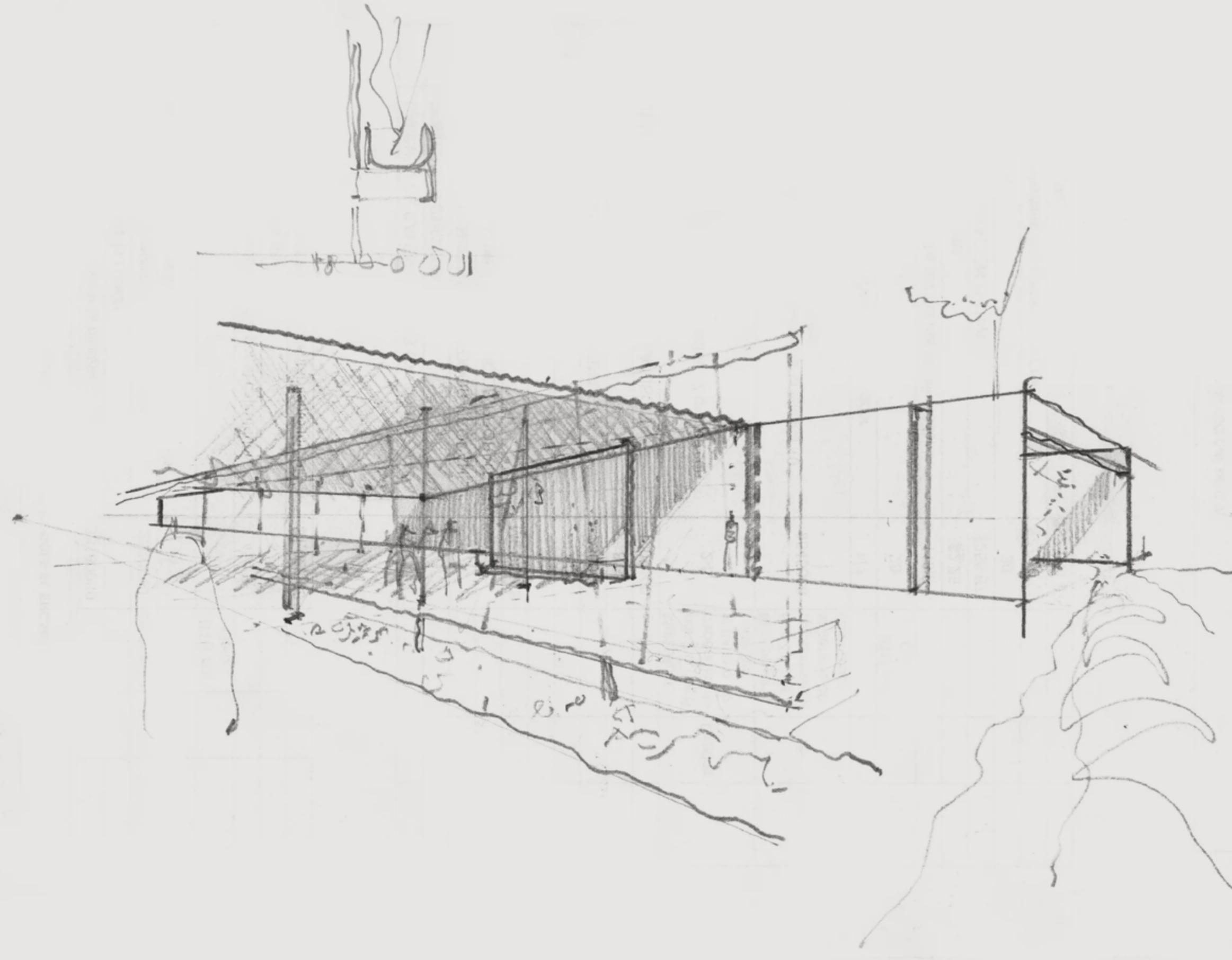




- LEGEND :
- 01 ENTERTAINMENT ROOM
 - 02 POOL
 - 03 STAIRS / LIFT
 - 04 FOYER
 - 05 CARPORT
 - 06 MASTER BEDROOM
 - 07 BEDROOM 2
 - 08 BRIDGE
 - 09 BEDROOM 1
 - 10 BALCONY
 - 11 MEP
 - 12 OUTDOOR SEATING AREA

NATURAL SUSTAINABILITY AT KETURAH RESERVE

- Keturah Reserve is designed to be naturally self-sustaining from conception.
- All amenity areas are accessible by foot on tree shaded pathways, eliminating the need of driving from place to place.
- Floorplans are created based on established material measurements to avoid material and energy waste. Materials are specifically selected for their adaptability to the microclimate of Meydan.
- Raw wood is fired a minimum six times to increase durability and resistance to wear and tear.
- High ceilings, wall thickness and windowpane density cool the interior naturally, saving energy by reducing the need for air conditioning.
- Balconies are broader than the norm to reduce the heat and glare of direct sunlight.
- Door frames and garages are wider to facilitate the flow of passage.
- New Luxury integrates sustainability naturally without the need of further human involvement.

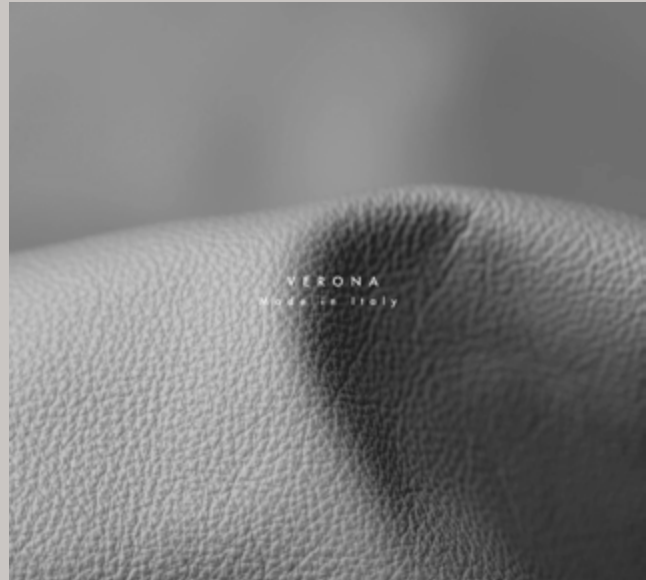


KETURAH RESERVE SUPERHOMES, DESIGNED FROM THE INSIDE OUT

Keturah Reserve is uniquely conceived and designed from the inside out using principles of the five elements, proportions, ratio and light, and natural materials. All residences are fully furnished, with furniture and fixtures custom-designed and produced for each space in natural, raw materials and in neutral colours. They blend perfectly into the interior, freeing the residents' movement and circulation, and elevating their physical and mental well-being.

Keturah Reserve's Super Home™ Concept is designed to transform residents' lives through their experience of the interior and exterior space.

THE FLOW OF AIR, LIGHT, COLOUR , SPACE, TEXTURE AND MATERIAL



THE FLOW OF AIR

Keturah Reserve homes are designed with double volume interior spaces, naturally increasing the flow of air. Keturah Reserve's super-efficient VRF (Variable Refrigerant Flow) technology reduces energy costs, improves residents' comfort, and sends cooled air to evaporators in different spaces, maintaining an even, consistent temperature by zone. The air filtration system silently eliminates pollen, cooking odors and smoke, continuously purifying and refreshing the air.



THE FLOW OF LIGHT

The architecture of Keturah Reserve is designed to optimize natural daylight without its heat or glare. When daylight fades, architectural lighting optimizes the body's circadian system, enhancing residents' mood, comfort and alertness, and improving the quality of their sleep.

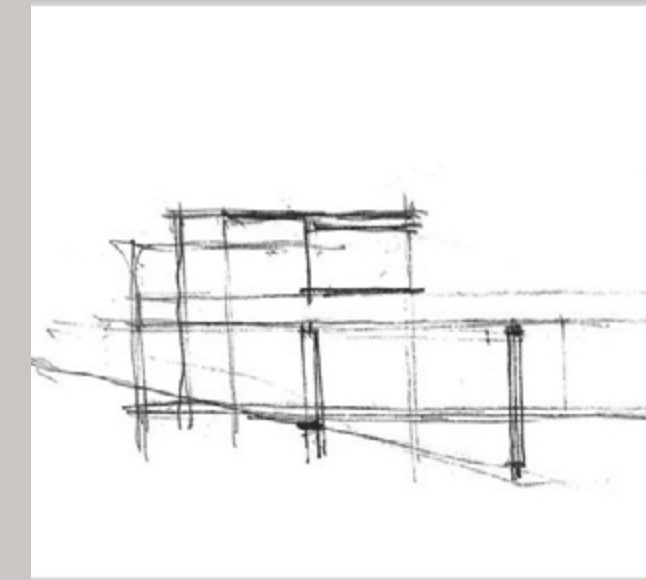
Lighting is always lateral, never directly overhead, to optimize visual comfort, enhance the space and create atmosphere by zone, for a subtle and healing ambiance



THE FLOW OF COLOUR

The architecture of Keturah Reserve homes blends into the rawness of the desert landscape, to create an ambiance of solace and serenity. The bleached bone-coloured travertine facade links the exterior to the interior, with bronze vertical slats creating a subtle interplay of light and shade.

The three cool-neutral tone-on-tone palette of cream, champagne and bronze, and three textures of wood, stone and metal, are inspired by the natural colours and textures of the surrounding desert.



THE FLOW OF SPACE

Keturah Reserve homes are conceived and designed from the inside out using contemporary architectural principles of the five elements, proportions, ratio and daylight, in raw, natural materials.

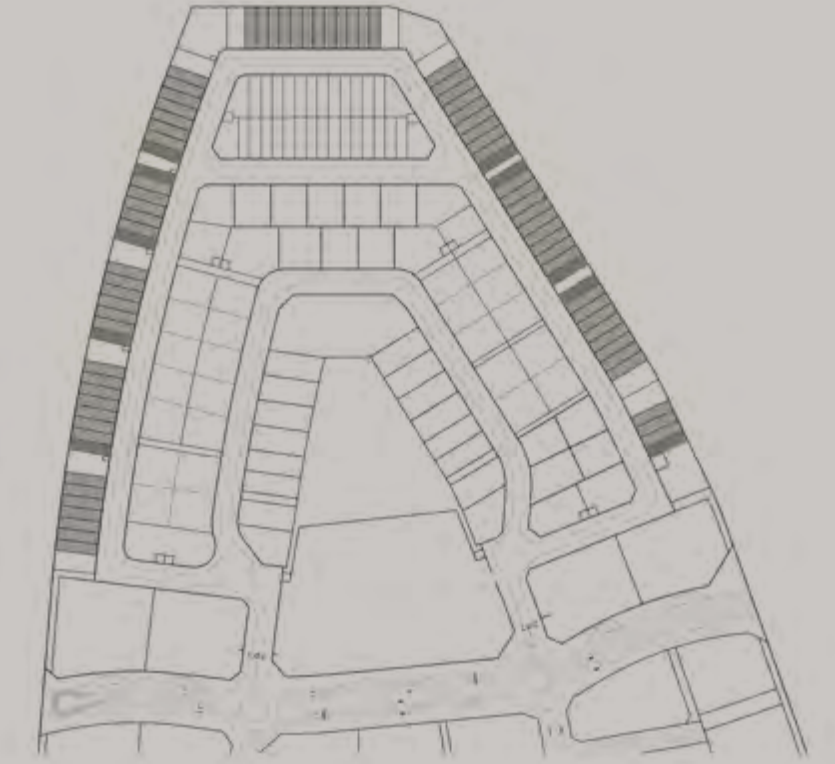
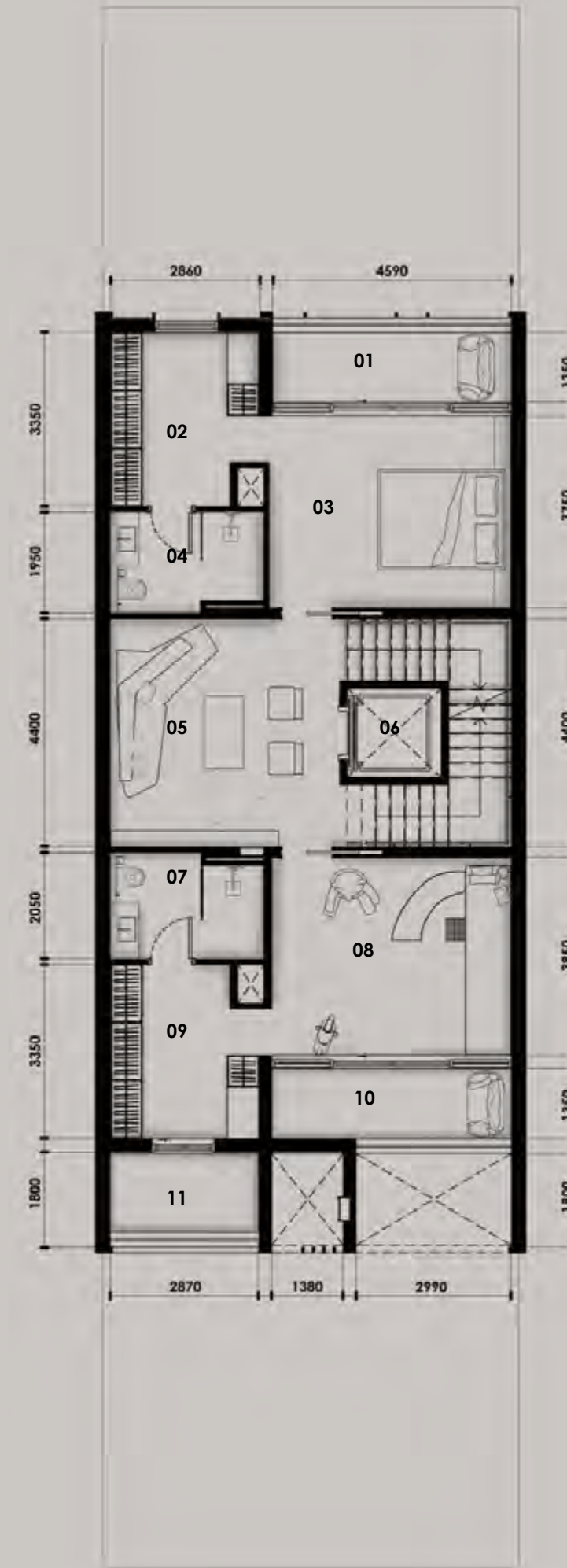
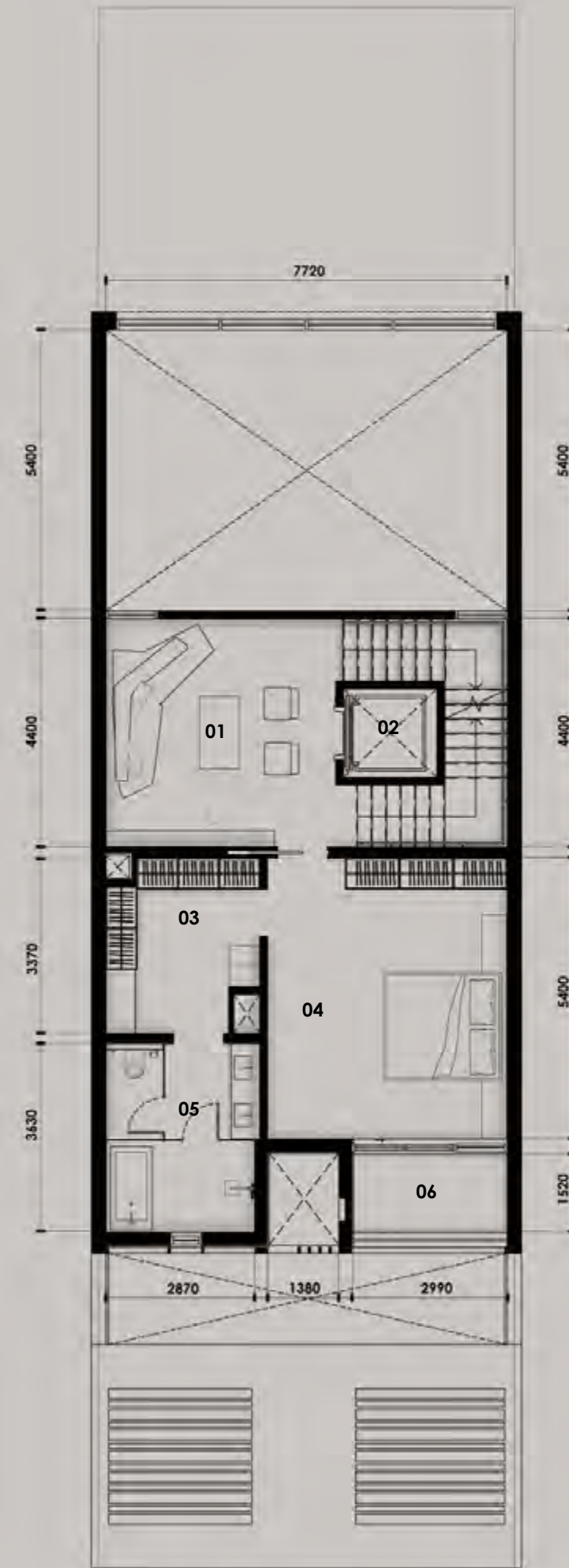
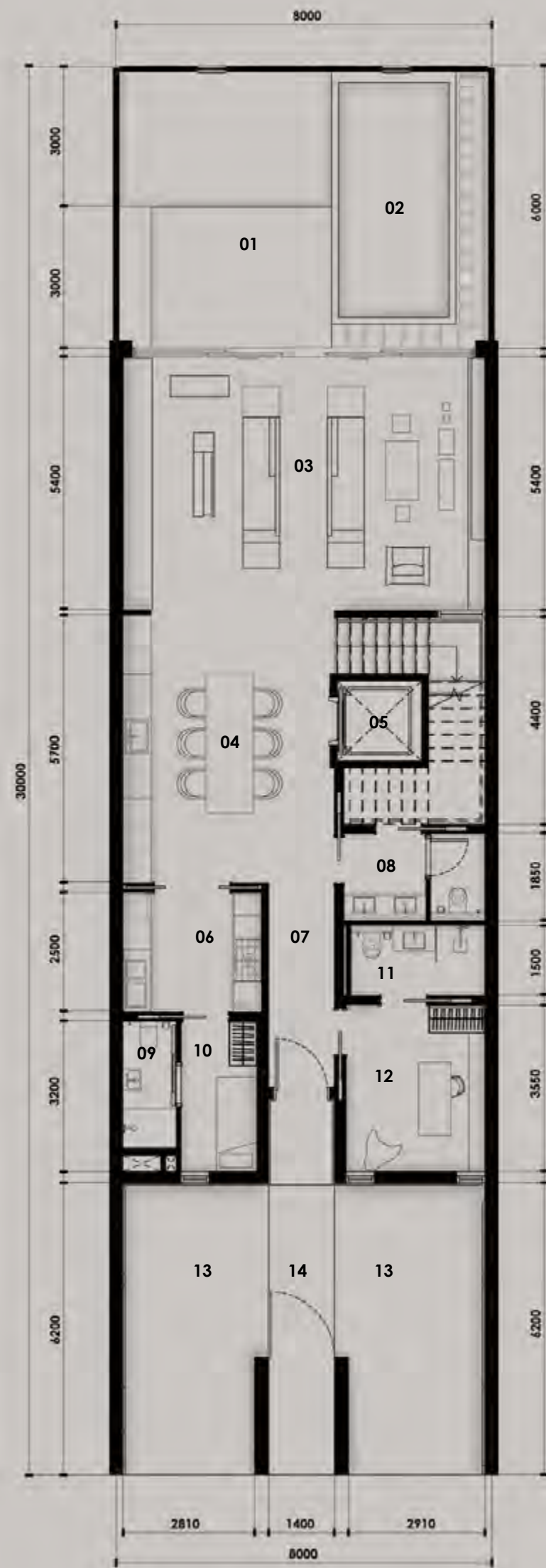
The double volume open plan spaces optimize the flow of passage, without corridors or hallways. Furniture and fixtures are custom-designed for each residence and produced for each space.

They blend perfectly into the interior, freeing the flow of residents' movement, and elevating their physical and mental well-being.



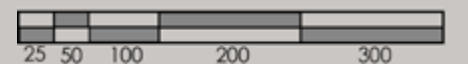
THE FLOW OF TEXTURE AND MATERIAL

The project's design began with the selection of textures, glass, travertine, wood and metal. Raw materials are selected to correspond with the flow of energy. Perfect individually, they interplay and exchange energies when placed together.



SUPERHOME	BUA (SQ.M)	BUA (SQ.FT)
Ground Floor	174.84 sq.m	1,881.94 sq.ft
First Floor	99.80 sq.m	1,074.25 sq.ft
Second Floor	134.93 sq.m	1,452.23 sq.ft
Roof deck	83.47 sq.m	898.50 sq.ft
Total	493.04 sq.m	5,307.02 sq.ft

PLOT	AREA	HEIGHT
AREA	239.90 sq.m	2,582.26 sq.ft
Plot No.	42, 43, 44 and 45	
No. of Units	73 REGULAR	10 CORNER
No. of Levels	GROUND + 2 FLOORS + ROOF	
Height	14.60m ROOF SLAB	



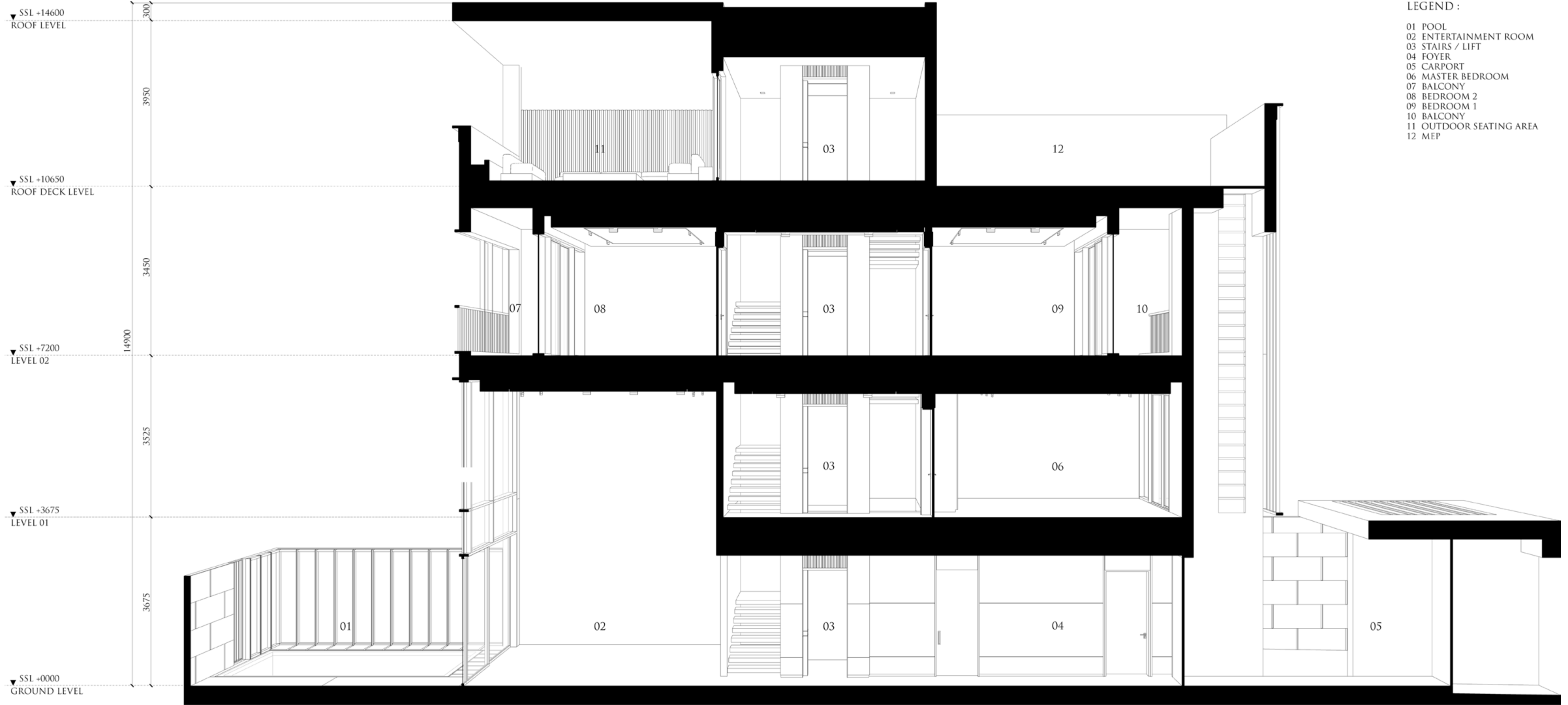
- 01 OUTDOOR YARD
- 02 POOL
- 03 ENTERTAINMENT AREA
- 04 KITCHEN | DINING AREA
- 05 LIFT
- 06 MAIN KITCHEN
- 07 HALLWAY
- 08 WASH AREA
- 09 MAID'S BATHROOM
- 10 MAID'S ROOM
- 11 GUEST BATHROOM
- 12 GUEST ROOM
- 13 CAR PORT
- 14 MAIN ENTRANCE

- 01 MASTER LIVING AREA
- 02 LIFT
- 03 WALK-IN-CLOSET
- 04 MASTER BEDROOM
- 05 MASTER BATHROOM
- 06 BALCONY

- 01 BALCONY
- 02 WALK-IN-CLOSET
- 03 BEDROOM
- 04 BATHROOM
- 05 ENTERTAINMENT AREA
- 06 LIFT
- 07 BATHROOM
- 08 BEDROOM | KID'S ROOM
- 09 WALK-IN-CLOSET
- 10 BALCONY
- 11 BALCONY

- 01 OUTDOOR SEATING AREA
- 02 OUTDOOR GRILL AREA
- 03 LAUNDRY AREA
- 04 LIFT
- 05 MEP SERVICES AREA

KETURAH RESERVE ROW HOUSE | 4 BEDROOM



Mohammed Bin Rashid City District 7 (MBR7)
25.2048° N, 55.2708° E



KETURAH RESERVE

BIO LIVING
DESIGN PROCESS



All room sizes and floor plans measurements are approximate and may vary per unit. Floor plans and unit features are preliminary and proposed only. Developer reserves the right to modify, revise, change or withdraw any or all of same in its sole and absolute discretion and without prior notice. Depictions of furnishings, finishes, appliances, counters, soffits, floor coverings and other matters of detail, including, without limitation, items of finish and decoration are conceptual only and are not necessarily included in each Unit. Consult your Agreement and the Prospectus for items included with your Unit.

Mohammed Bin Rashid City District 7 (MBR7)
25.2048° N, 55.2708° E

KETURAH RESERVE

BIO LIVING
DESIGN PROCESS



All room sizes and floor plans measurements are approximate and may vary per unit. Floor plans and unit features are preliminary and proposed only. Developer reserves the right to modify, revise, change or withdraw any or all of same in its sole and absolute discretion and without prior notice. Depictions of furnishings, finishes, appliances, counters, soffits, floor coverings and other matters of detail, including, without limitation, items of finish and decoration are conceptual only and are not necessarily included in each Unit. Consult your Agreement and the Prospectus for items included with your Unit.

Mohammed Bin Rashid City District 7 (MBR7)
25.2048° N, 55.2708° E



KETURAH RESERVE

BIO LIVING
DESIGN PROCESS



All room sizes and floor plans measurements are approximate and may vary per unit. Floor plans and unit features are preliminary and proposed only. Developer reserves the right to modify, revise, change or withdraw any or all of same in its sole and absolute discretion and without prior notice. Depictions of furnishings, finishes, appliances, counters, soffits, floor coverings and other matters of detail, including, without limitation, items of finish and decoration are conceptual only and are not necessarily included in each Unit. Consult your Agreement and the Prospectus for items included with your Unit.

Mohammed Bin Rashid City District 7 (MBR7)
25.2048° N, 55.2708° E



KETURAH RESERVE

BIO LIVING
DESIGN PROCESS



All Keturah Reserve homes include two kitchens, a functional and an entertainment kitchen.

All room sizes and floor plans measurements are approximate and may vary per unit. Floor plans and unit features are preliminary and proposed only. Developer reserves the right to modify, revise, change or withdraw any or all of same in its sole and absolute discretion and without prior notice. Depictions of furnishings, finishes, appliances, counters, soffits, floor coverings and other matters of detail, including, without limitation, items of finish and decoration are conceptual only and are not necessarily included in each Unit. Consult your Agreement and the Prospectus for items included with your Unit.

Mohammed Bin Rashid City District 7 (MBR7)
25.2048° N, 55.2708° E



KETURAH RESERVE

BIO LIVING
DESIGN PROCESS



All room sizes and floor plans measurements are approximate and may vary per unit. Floor plans and unit features are preliminary and proposed only. Developer reserves the right to modify, revise, change or withdraw any or all of same in its sole and absolute discretion and without prior notice. Depictions of furnishings, finishes, appliances, counters, soffits, floor coverings and other matters of detail, including, without limitation, items of finish and decoration are conceptual only and are not necessarily included in each Unit. Consult your Agreement and the Prospectus for items included with your Unit.



All room sizes and floor plans measurements are approximate and may vary per unit. Floor plans and unit features are preliminary and proposed only. Developer reserves the right to modify, revise, change or withdraw any or all of same in its sole and absolute discretion and without prior notice. Depictions of furnishings, finishes, appliances, counters, soffits, floor coverings and other matters of detail, including, without limitation, items of finish and decoration are conceptual only and are not necessarily included in each Unit. Consult your Agreement and the Prospectus for items included with your Unit.

Mohammed Bin Rashid City District 7 (MBR7)
25.2048° N, 55.2708° E

KETURAH RESERVE

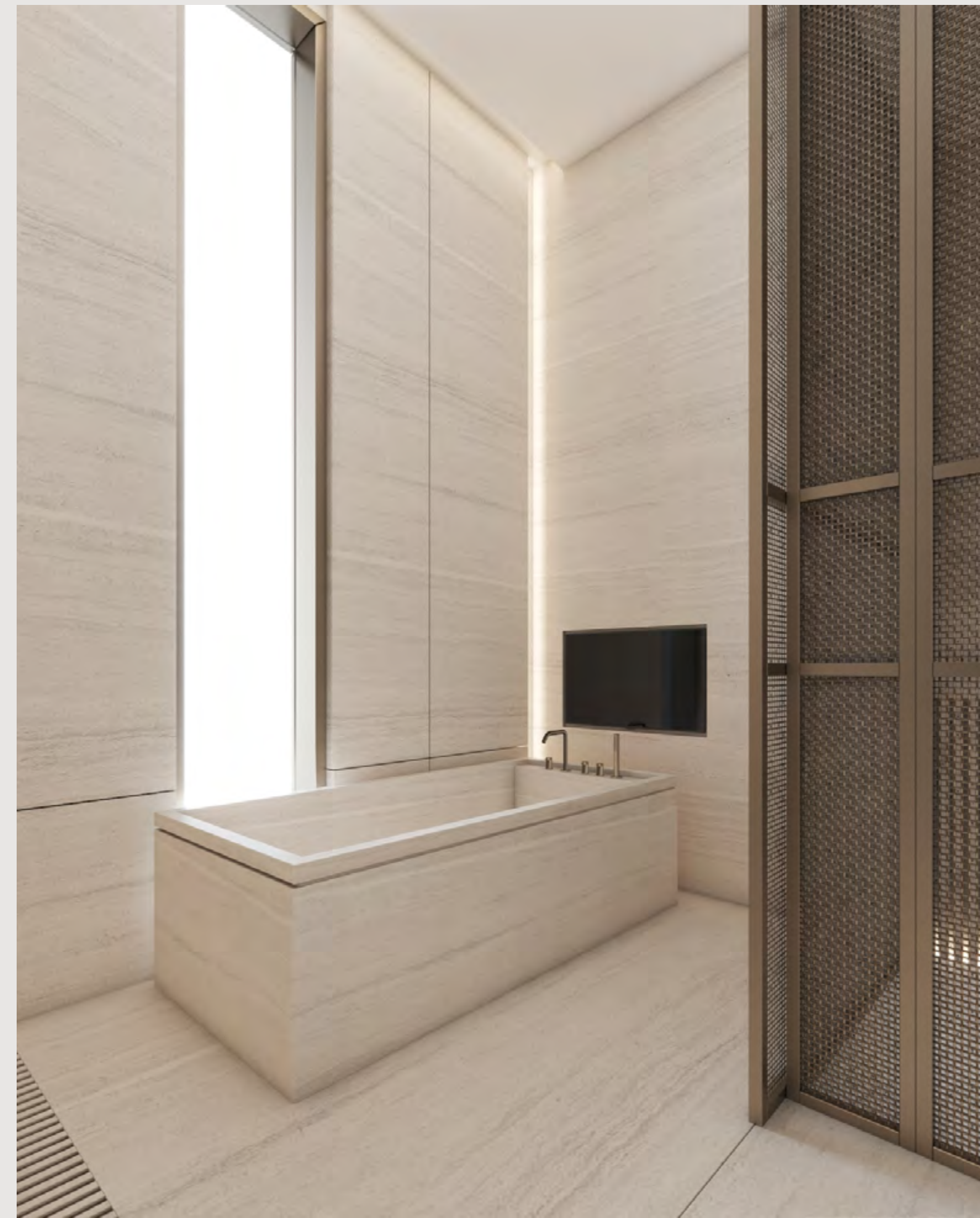
BIO LIVING
DESIGN PROCESS



All room sizes and floor plans measurements are approximate and may vary per unit. Floor plans and unit features are preliminary and proposed only. Developer reserves the right to modify, revise, change or withdraw any or all of same in its sole and absolute discretion and without prior notice. Depictions of furnishings, finishes, appliances, counters, soffits, floor coverings and other matters of detail, including, without limitation, items of finish and decoration are conceptual only and are not necessarily included in each Unit. Consult your Agreement and the Prospectus for items included with your Unit.



All room sizes and floor plans measurements are approximate and may vary per unit. Floor plans and unit features are preliminary and proposed only. Developer reserves the right to modify, revise, change or withdraw any or all of same in its sole and absolute discretion and without prior notice. Depictions of furnishings, finishes, appliances, counters, soffits, floor coverings and other matters of detail, including, without limitation, items of finish and decoration are conceptual only and are not necessarily included in each Unit. Consult your Agreement and the Prospectus for items included with your Unit.



All room sizes and floor plans measurements are approximate and may vary per unit. Floor plans and unit features are preliminary and proposed only. Developer reserves the right to modify, revise, change or withdraw any or all of same in its sole and absolute discretion and without prior notice. Depictions of furnishings, finishes, appliances, counters, soffits, floor coverings and other matters of detail, including, without limitation, items of finish and decoration are conceptual only and are not necessarily included in each Unit. Consult your Agreement and the Prospectus for items included with your Unit.

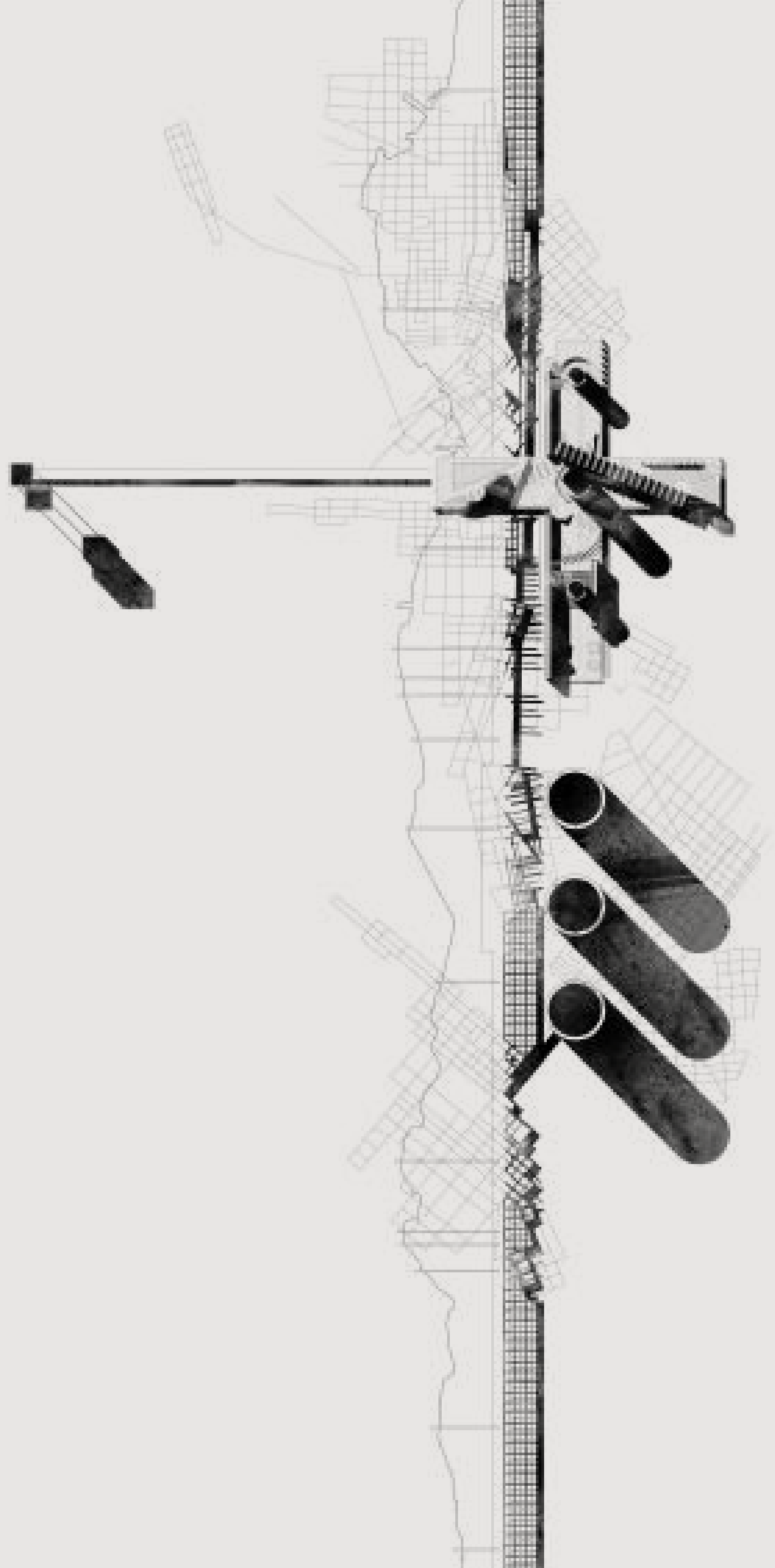
Mohammed Bin Rashid City District 7 (MBR7)
25.2048° N, 55.2708° E

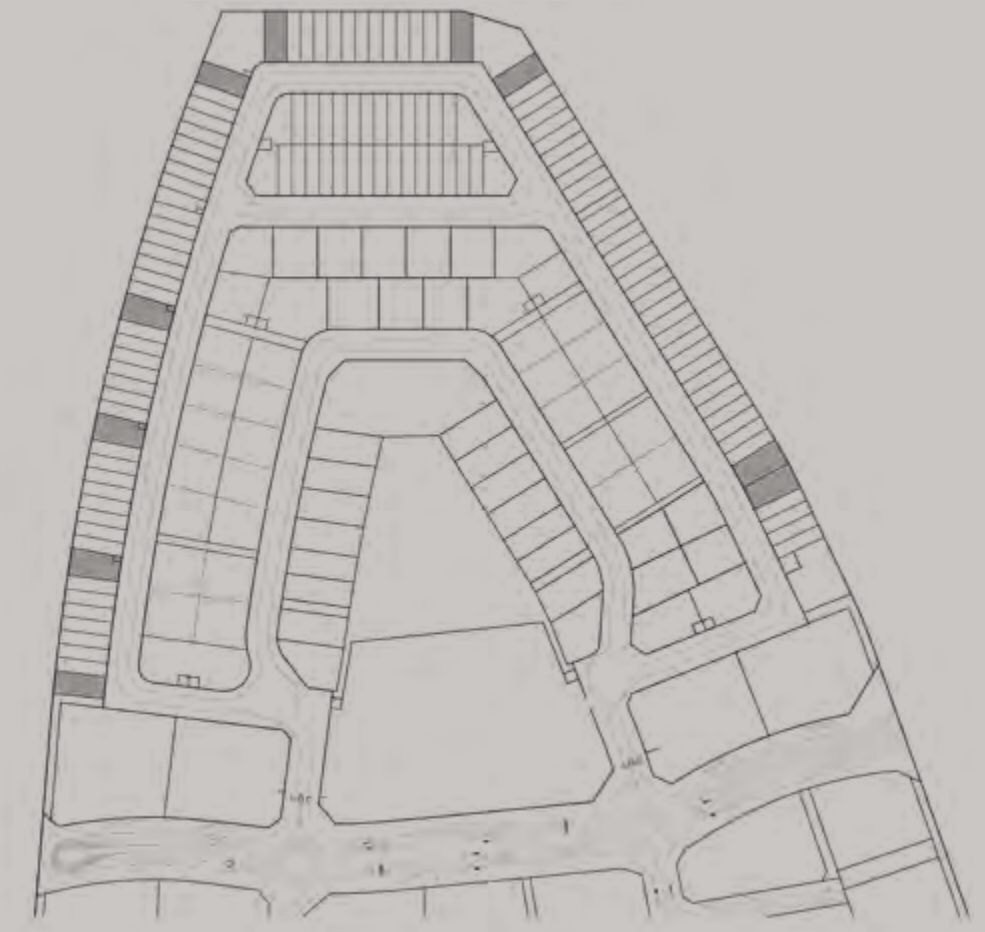
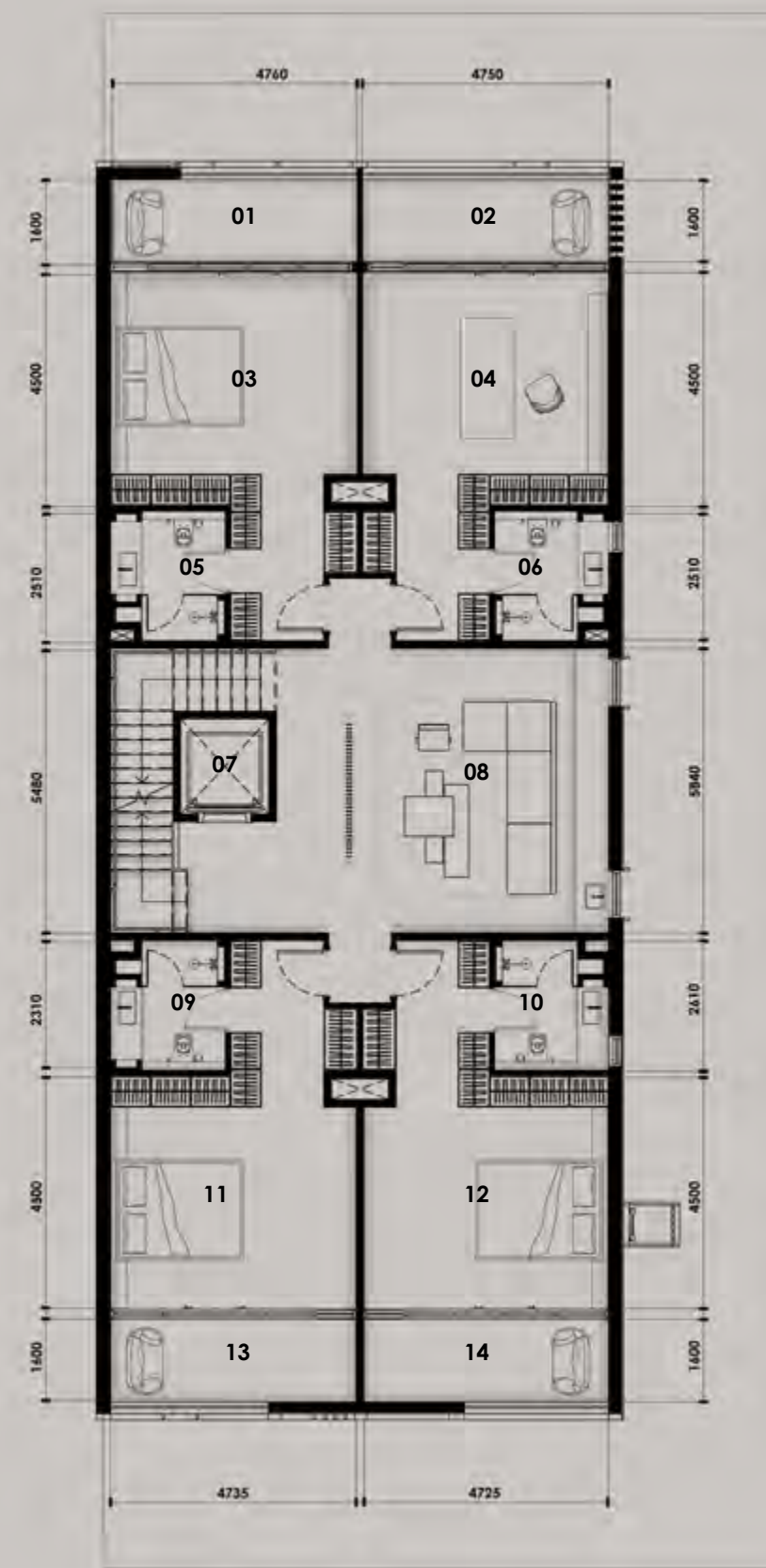
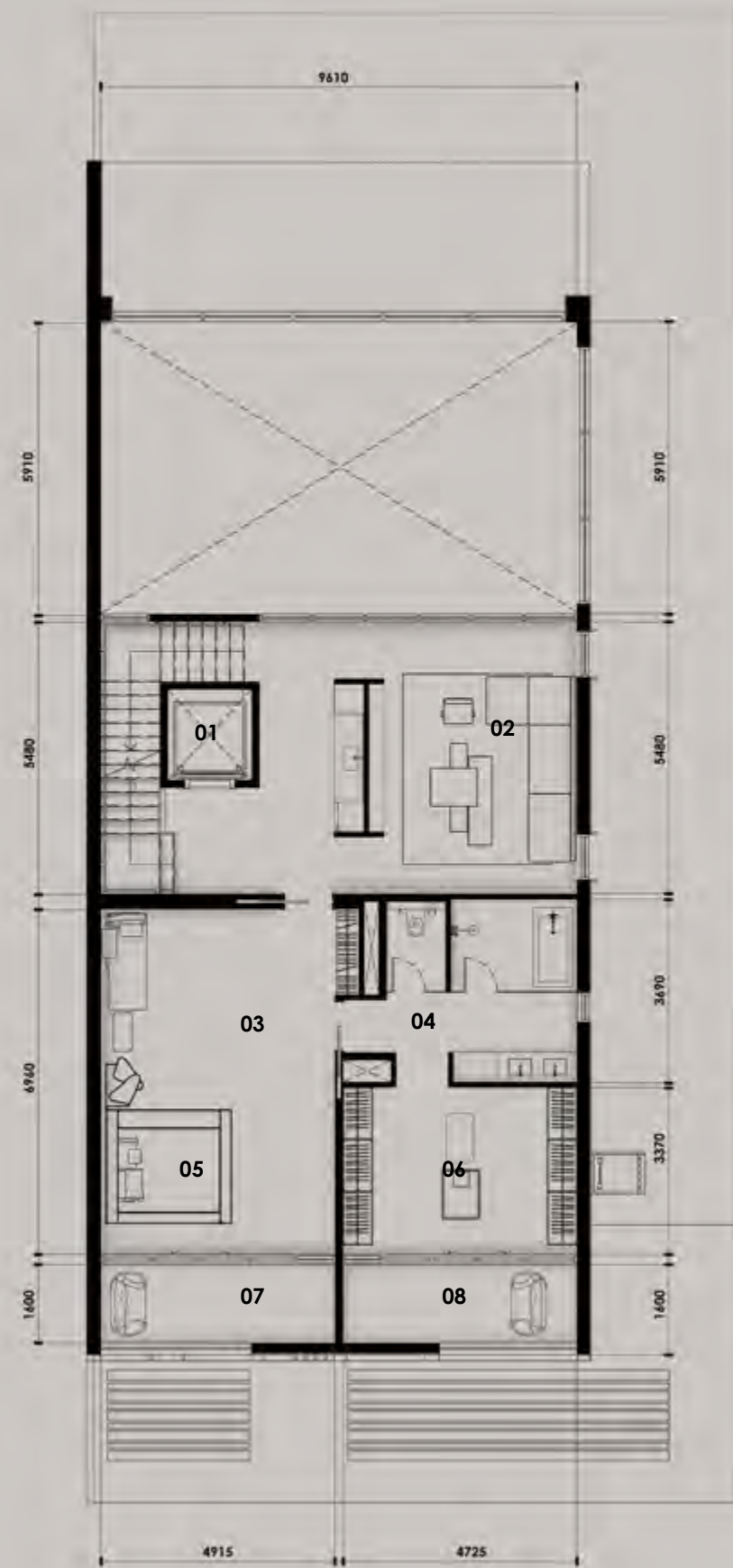
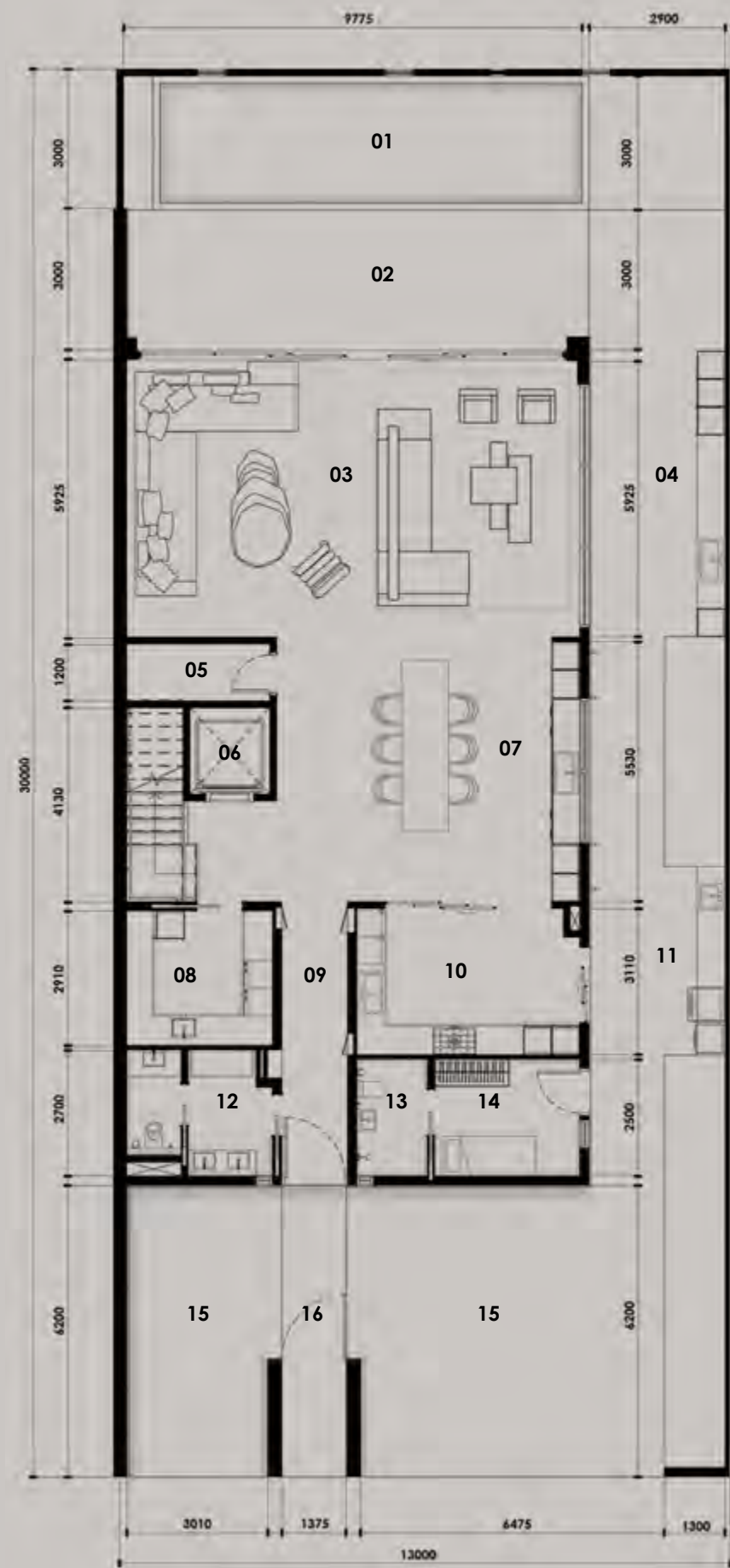
KETURAH RESERVE

BIO LIVING
DESIGN PROCESS



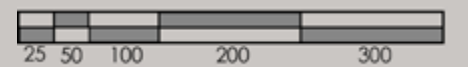
All room sizes and floor plans measurements are approximate and may vary per unit. Floor plans and unit features are preliminary and proposed only. Developer reserves the right to modify, revise, change or withdraw any or all of same in its sole and absolute discretion and without prior notice. Depictions of furnishings, finishes, appliances, counters, soffits, floor coverings and other matters of detail, including, without limitation, items of finish and decoration are conceptual only and are not necessarily included in each Unit. Consult your Agreement and the Prospectus for items included with your Unit.





SUPERHOME	BUA (SQ.M)	BUA (SQ.FT)
Ground Floor	280.41 sq.m	3,018.39 sq.ft
First Floor	180.60 sq.m	1,660.60 sq.ft
Second Floor	240.83 sq.m	2,592.28 sq.ft
Roof deck	150.65 sq.m	1,621.59 sq.ft
Total	826.17 sq.m	8,892.86 sq.ft

PLOT		
AREA	383.86 - 457.53 sq.m	4,131.83 - 4,924.81 sq.ft
Plot No.	42, 43, 44 and 45	
No. of Units	10 REGULAR	
No. of Levels	GROUND + 2 FLOORS + ROOF	
Height	14.60m ROOF SLAB	



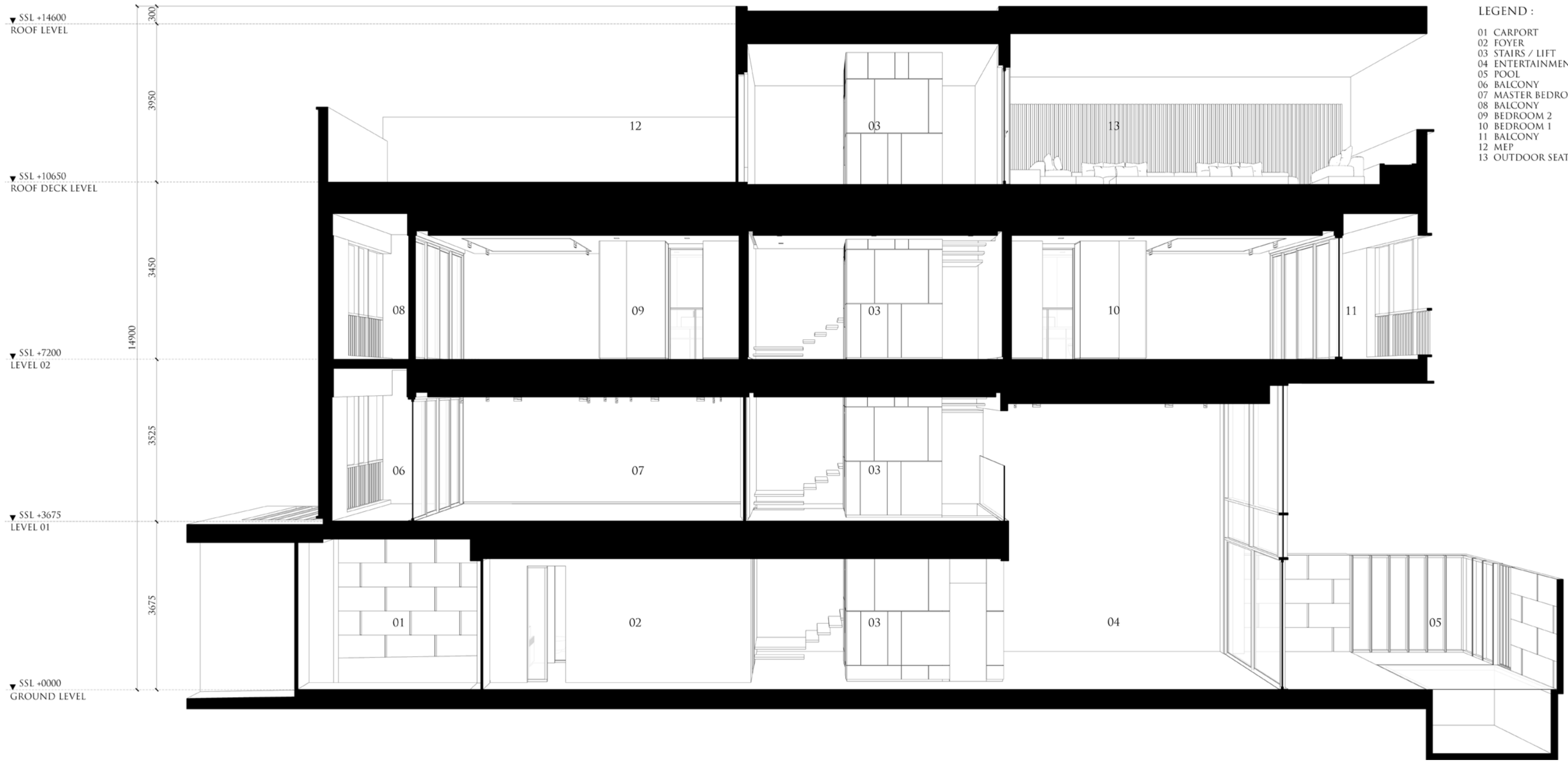
- 01 POOL
- 02 OUTDOOR TERRACE
- 03 ENTERTAINMENT AREA
- 04 OUTDOOR BAR
- 05 STORAGE
- 06 LIFT
- 07 KITCHEN | DINING AREA
- 08 LAUNDRY ROOM
- 09 HALLWAY
- 10 SERVICE KITCHEN
- 11 OUTDOOR GRILL AREA
- 12 WASH AREA
- 13 MAID'S BATHROOM
- 14 MAID'S ROOM
- 15 CARPORT
- 16 MAIN ENTRANCE

- 01 LIFT
- 02 MASTER LIVING AREA
- 03 MASTER SEATING AREA
- 04 MASTER BATHROOM
- 05 MASTER BEDROOM
- 06 WALK-IN-CLOSET
- 07 BALCONY
- 08 BALCONY

- 01 BALCONY 1
- 02 BALCONY 2
- 03 BEDROOM 1
- 04 BEDROOM 2
- 05 BATHROOM 1
- 06 BATHROOM 2
- 07 LIFT
- 08 ENTERTAINMENT AREA
- 09 BATHROOM 3
- 10 BATHROOM 4
- 11 BEDROOM 3
- 12 BEDROOM 4
- 13 BALCONY 3
- 14 BALCONY 4

- 01 OUTDOOR SEATING AREA
- 02 LIFT
- 03 OUTDOOR GRILL AREA
- 04 MEP SERVICES AREA

KETURAH RESERVE ROW HOUSE | 5 BEDROOM



- LEGEND :
- 01 CARPORT
 - 02 FOYER
 - 03 STAIRS / LIFT
 - 04 ENTERTAINMENT ROOM
 - 05 POOL
 - 06 BALCONY
 - 07 MASTER BEDROOM
 - 08 BALCONY
 - 09 BEDROOM 2
 - 10 BEDROOM 1
 - 11 BALCONY
 - 12 MEP
 - 13 OUTDOOR SEATING AREA

Mohammed Bin Rashid City District 7 (MBR7)
25.2048° N, 55.2768° E



KETURAH RESERVE

BIO LIVING
DESIGN PROCESS

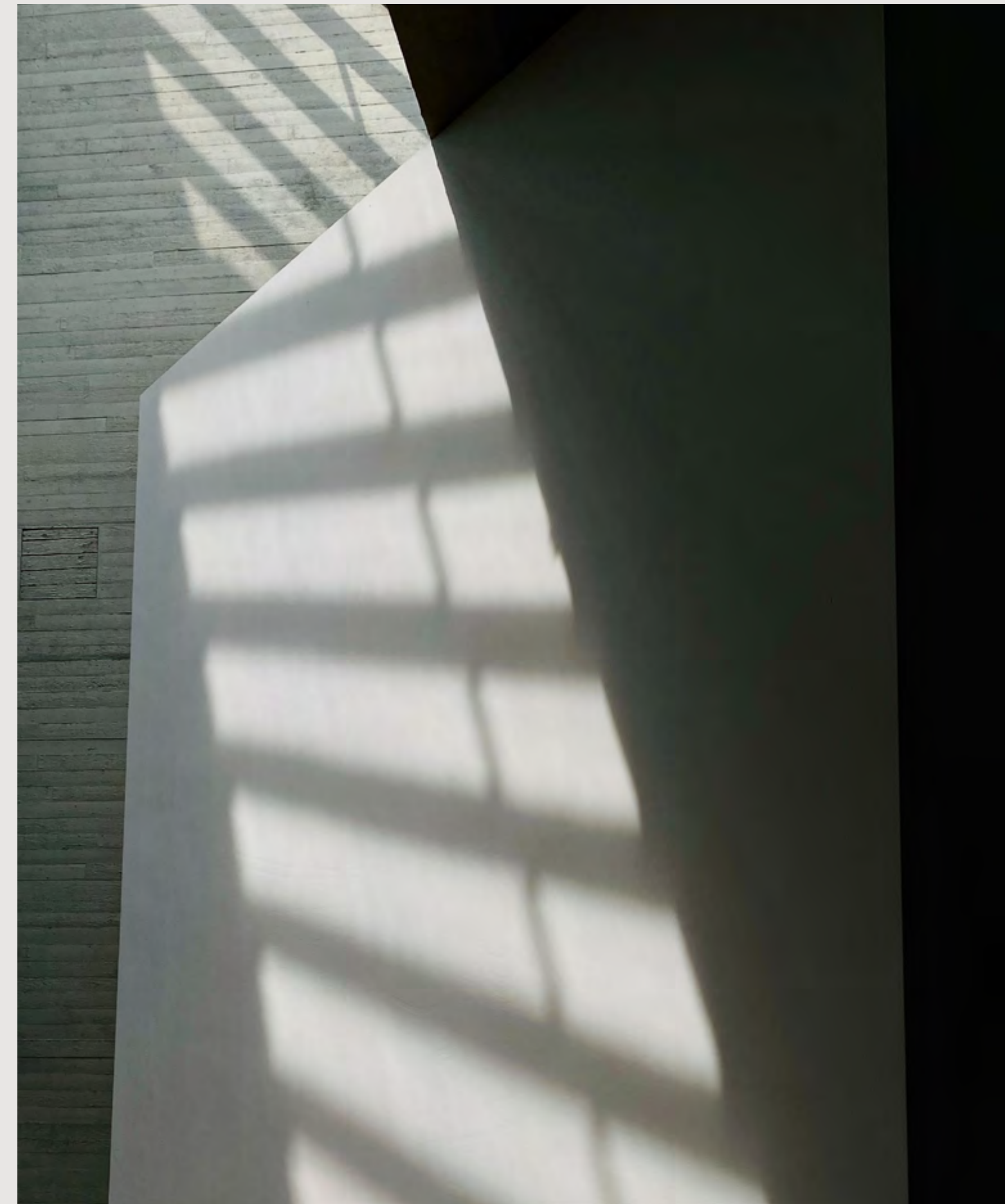
All room sizes and floor plans measurements are approximate and may vary per unit. Floor plans and unit features are preliminary and proposed only. Developer reserves the right to modify, revise, change or withdraw any or all of same in its sole and absolute discretion and without prior notice. Depictions of furnishings, finishes, appliances, counters, soffits, floor coverings and other matters of detail, including, without limitation, items of finish and decoration are conceptual only and are not necessarily included in each Unit. Consult your Agreement and the Prospectus for items included with your Unit.

Mohammed Bin Rashid City District 7 (MBR7)
25.2048° N, 55.2708° E



KETURAH RESERVE

BIO LIVING
DESIGN PROCESS



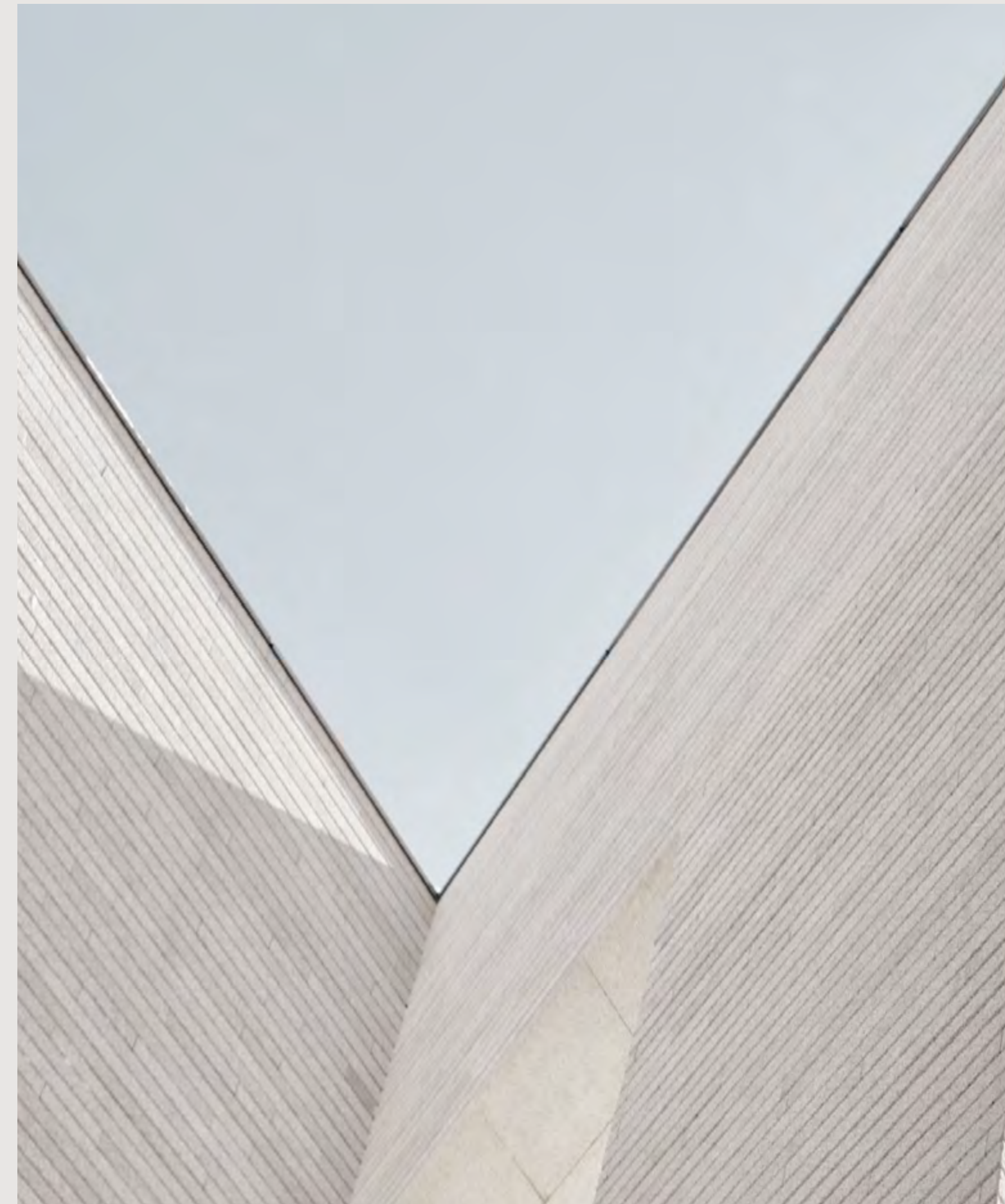
All room sizes and floor plans measurements are approximate and may vary per unit. Floor plans and unit features are preliminary and proposed only. Developer reserves the right to modify, revise, change or withdraw any or all of same in its sole and absolute discretion and without prior notice. Depictions of furnishings, finishes, appliances, counters, soffits, floor coverings and other matters of detail, including, without limitation, items of finish and decoration are conceptual only and are not necessarily included in each Unit. Consult your Agreement and the Prospectus for items included with your Unit.

Mohammed Bin Rashid City District 7 (MBR7)
25.2048° N, 55.2708° E



KETURAH RESERVE

BIO LIVING
DESIGN PROCESS



All room sizes and floor plans measurements are approximate and may vary per unit. Floor plans and unit features are preliminary and proposed only. Developer reserves the right to modify, revise, change or withdraw any or all of same in its sole and absolute discretion and without prior notice. Depictions of furnishings, finishes, appliances, counters, soffits, floor coverings and other matters of detail, including, without limitation, items of finish and decoration are conceptual only and are not necessarily included in each Unit. Consult your Agreement and the Prospectus for items included with your Unit.



Mohammed Bin Rashid City District 7 (MBR7)
25.2048° N, 55.2708° E



KETURAH RESERVE

BIO LIVING
DESIGN PROCESS



All room sizes and floor plans measurements are approximate and may vary per unit. Floor plans and unit features are preliminary and proposed only. Developer reserves the right to modify, revise, change or withdraw any or all of same in its sole and absolute discretion and without prior notice. Depictions of furnishings, finishes, appliances, counters, soffits, floor coverings and other matters of detail, including, without limitation, items of finish and decoration are conceptual only and are not necessarily included in each Unit. Consult your Agreement and the Prospectus for items included with your Unit.

Mohammed Bin Rashid City District 7 (MBRZ)
25.2048° N, 55.2708° E



All room sizes and floor plans measurements are approximate and may vary per unit. Floor plans and unit features are preliminary and proposed only. Developer reserves the right to modify, revise, change or withdraw any or all of same in its sole and absolute discretion and without prior notice. Depictions of furnishings, finishes, appliances, counters, soffits, floor coverings and other matters of detail, including, without limitation, items of finish and decoration are conceptual only and are not necessarily included in each Unit. Consult your Agreement and the Prospectus for items included with your Unit.

KETURAH RESERVE

BIO LIVING
DESIGN PROCESS



Mohammed Bin Rashid City District 7 (MBR7)
25.2048° N, 55.2708° E



KETURAH RESERVE

BIO LIVING
DESIGN PROCESS



All room sizes and floor plans measurements are approximate and may vary per unit. Floor plans and unit features are preliminary and proposed only. Developer reserves the right to modify, revise, change or withdraw any or all of same in its sole and absolute discretion and without prior notice. Depictions of furnishings, finishes, appliances, counters, soffits, floor coverings and other matters of detail, including, without limitation, items of finish and decoration are conceptual only and are not necessarily included in each Unit. Consult your Agreement and the Prospectus for items included with your Unit.

Mohammed Bin Rashid City District 7 (MBR7)
25.2048° N, 55.2708° E



KETURAH RESERVE

BIO LIVING
DESIGN PROCESS

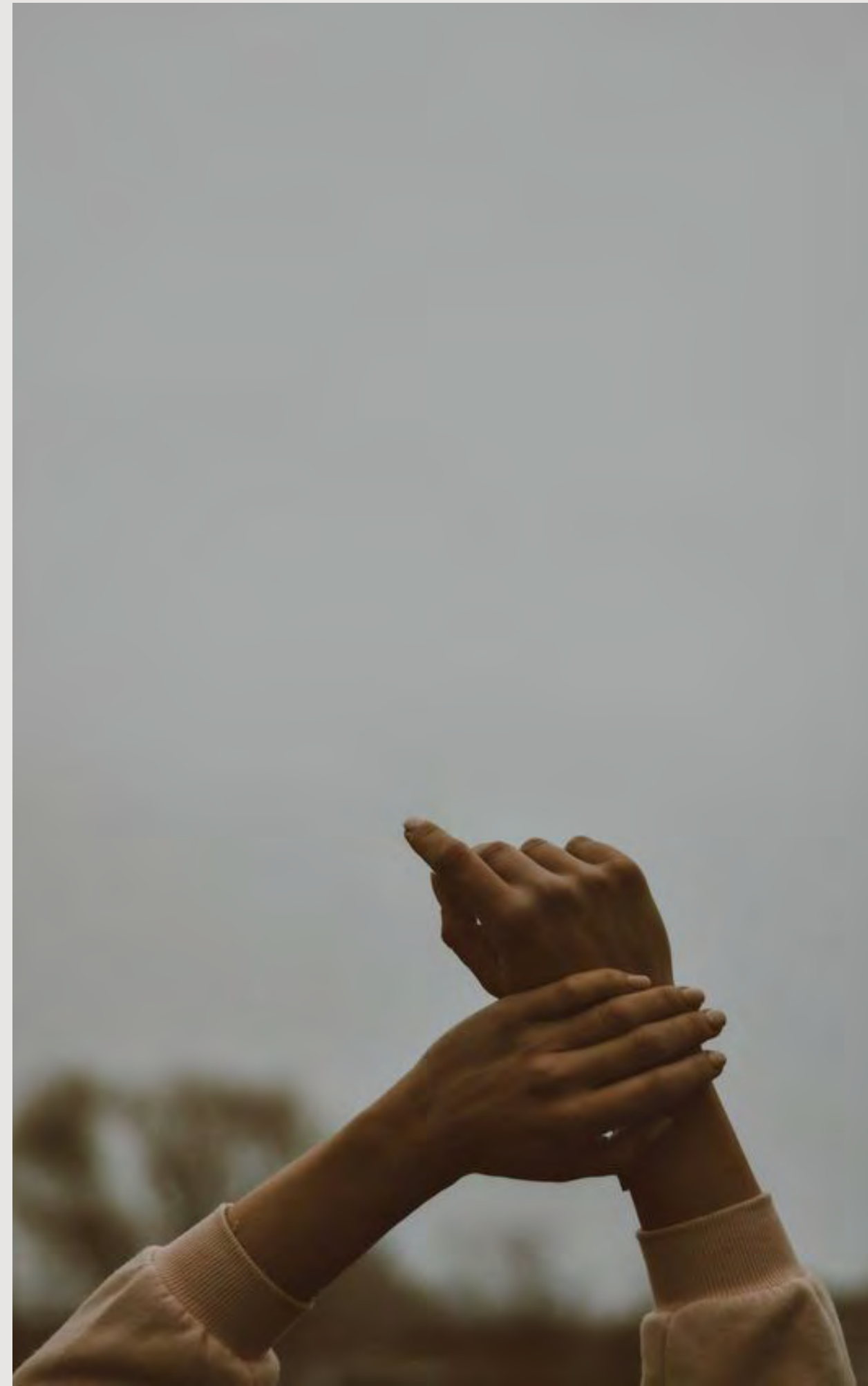


All room sizes and floor plans measurements are approximate and may vary per unit. Floor plans and unit features are preliminary and proposed only. Developer reserves the right to modify, revise, change or withdraw any or all of same in its sole and absolute discretion and without prior notice. Depictions of furnishings, finishes, appliances, counters, soffits, floor coverings and other matters of detail, including, without limitation, items of finish and decoration are conceptual only and are not necessarily included in each Unit. Consult your Agreement and the Prospectus for items included with your Unit.

Mohammed Bin Rashid City District 7 (MBR7)
25.2048° N, 55.2708° E

KETURAH RESERVE

BIO LIVING
DESIGN PROCESS



All room sizes and floor plans measurements are approximate and may vary per unit. Floor plans and unit features are preliminary and proposed only. Developer reserves the right to modify, revise, change or withdraw any or all of same in its sole and absolute discretion and without prior notice. Depictions of furnishings, finishes, appliances, counters, soffits, floor coverings and other matters of detail, including, without limitation, items of finish and decoration are conceptual only and are not necessarily included in each Unit. Consult your Agreement and the Prospectus for items included with your Unit.

Mohammed Bin Rashid City District 7 (MBR7)
25.2048° N, 55.2708° E



All room sizes and floor plans measurements are approximate and may vary per unit. Floor plans and unit features are preliminary and proposed only. Developer reserves the right to modify, revise, change or withdraw any or all of same in its sole and absolute discretion and without prior notice. Depictions of furnishings, finishes, appliances, counters, soffits, floor coverings and other matters of detail, including, without limitation, items of finish and decoration are conceptual only and are not necessarily included in each Unit. Consult your Agreement and the Prospectus for items included with your Unit.

KETURAH RESERVE

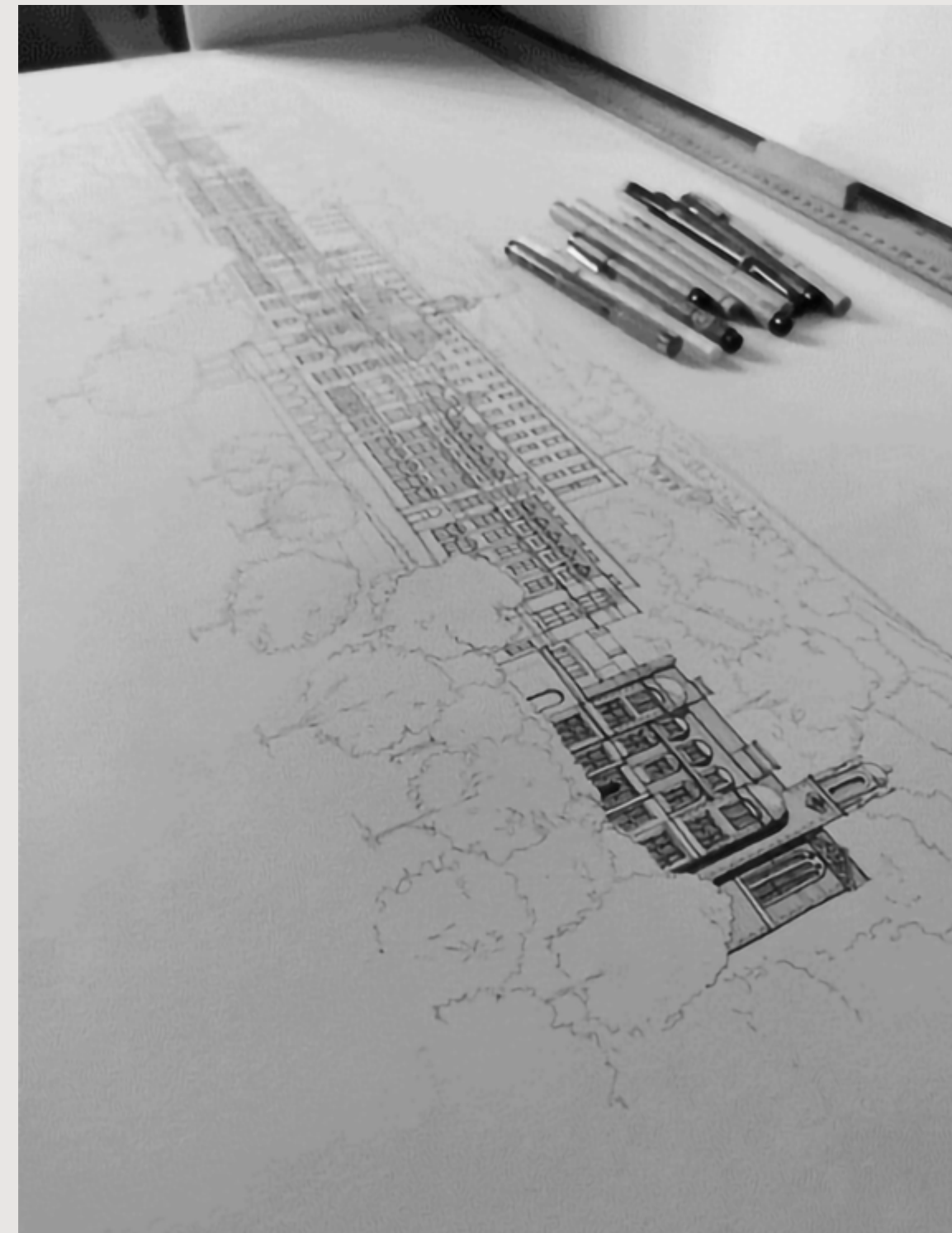
BIO LIVING
DESIGN PROCESS



Mohammed Bin Rashid City District 7 (MBR7)
25.2048° N, 55.2708° E

KETURAH RESERVE

BIO LIVING
DESIGN PROCESS



All room sizes and floor plans measurements are approximate and may vary per unit. Floor plans and unit features are preliminary and proposed only. Developer reserves the right to modify, revise, change or withdraw any or all of same in its sole and absolute discretion and without prior notice. Depictions of furnishings, finishes, appliances, counters, soffits, floor coverings and other matters of detail, including, without limitation, items of finish and decoration are conceptual only and are not necessarily included in each Unit. Consult your Agreement and the Prospectus for items included with your Unit.

Each Keturah Reserve home features a home office,
which may also be converted into a bedroom.

INTERIOR BODY

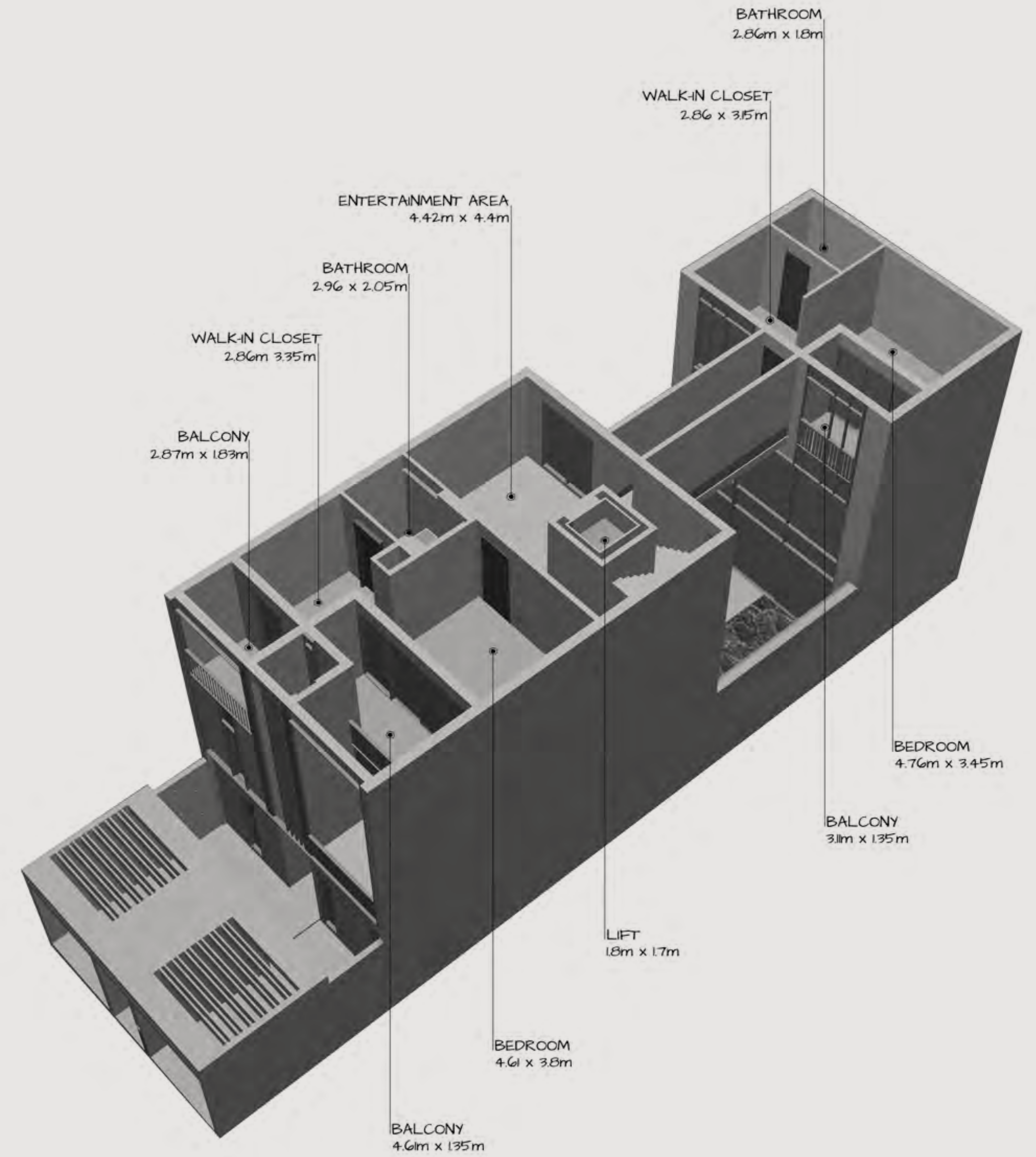
Keturah Reserve is uniquely designed from the inside out, from the central beating heart to the exterior, the architectural skin.

ARCHITECTURE SKIN

The clean, geometric lines of the façade connect the interior to the exterior.

LANDSCAPE

The homes blend into the rawness of the desert landscape with its indigenous plants and olive trees.





FRAMELESS SLIDING DOOR



WHITE TRAVERTINE TILES

The travertine façade links the outside to the inside, with the vertical metal slats creating a play of shadow and intimacy.



HAIRLINE CHAMPAGNE METAL



WOODEN FLOOR

Quooker®

Hot, cold, chilled and sparking filtered water from a single tap.



TOTO

Award-winning innovative sanitary ceramic bathroom suites from Japan.



Miele

German engineered state-of-the-art kitchen appliances. Revolutionary Technology.



dyson

Cordless vacuum cleaner for optimum home hygiene.



Mohammed Bin Rashid City District 7 (MBR7)
25.2048° N, 55.2708° E

KETURAH RESERVE

BIO LIVING
DESIGN PROCESS

HOME OWNING ADVANTAGES AT KETURAH RESERVE

Becoming a Keturah Reserve homeowner entitles the resident to request and obtain Visas for family members and house employees including chefs, nannies, maids, gardeners and personal secretaries, (subject to approval).

KETURAH

RESERVE

For a viewing appointment, please call
800 624

KETURAH RESERVE
TRANSFORMATIONAL LIVING THROUGH DESIGN