

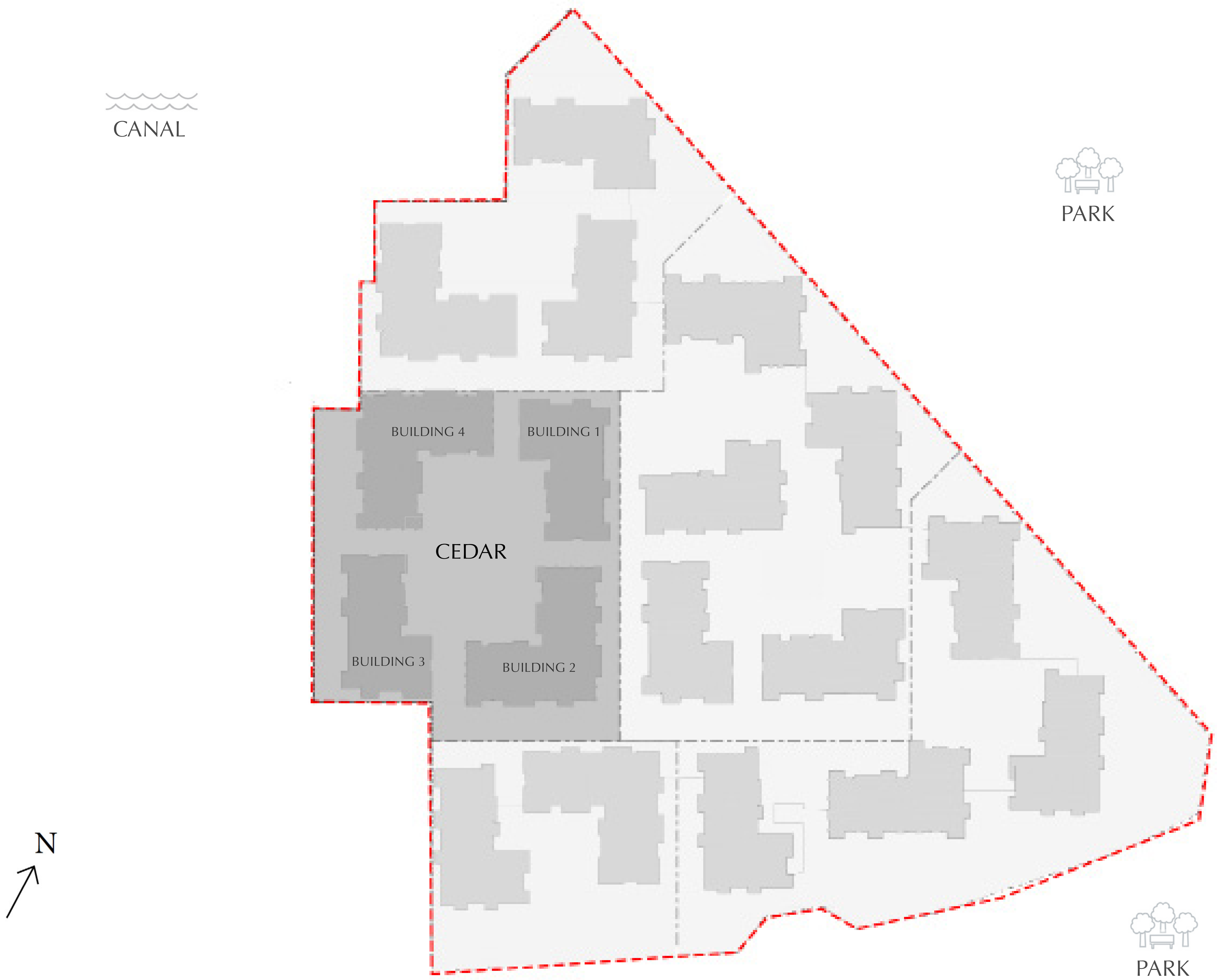
FLOOR PLANS

CEDAR

CREEK BEACH

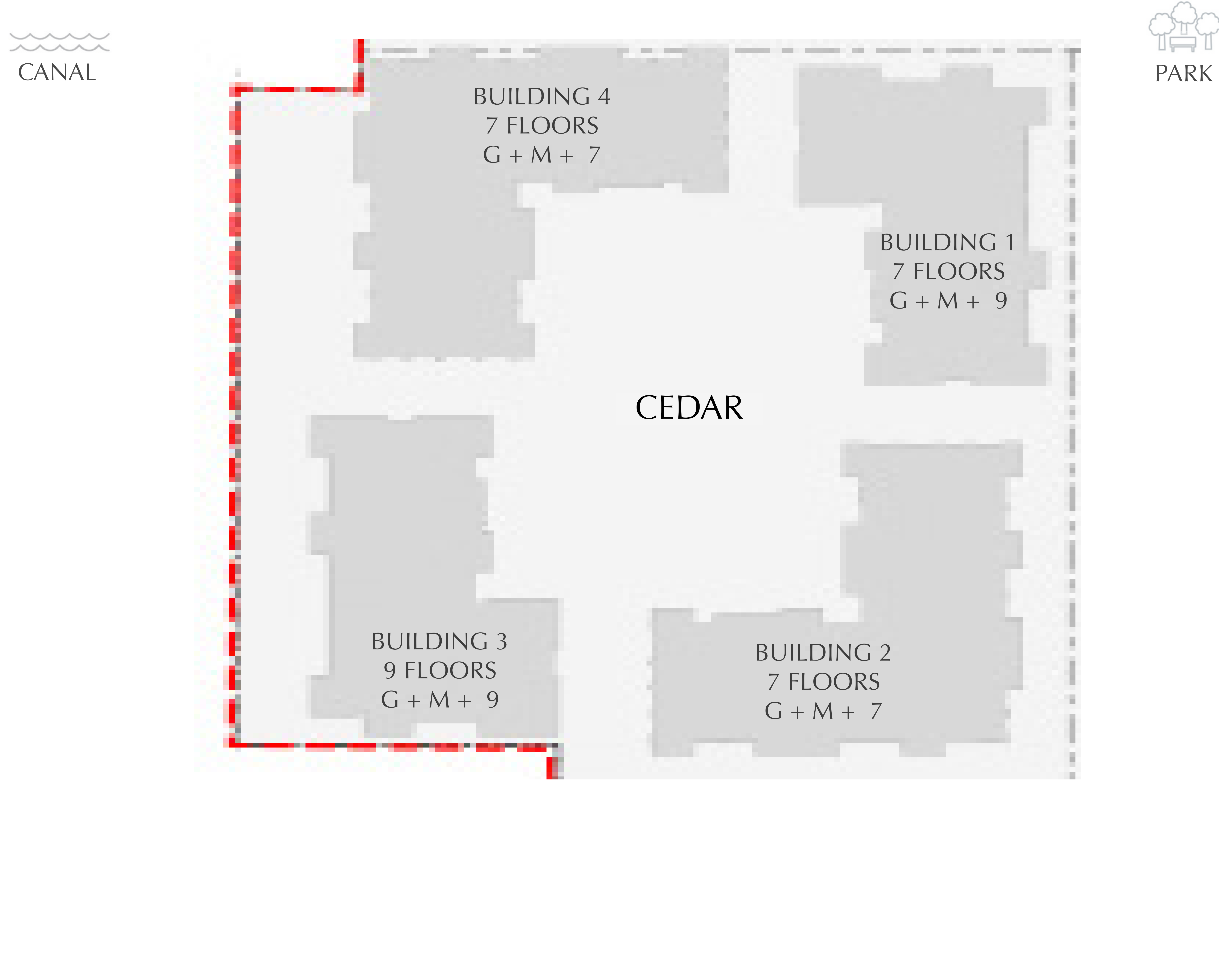
EMAAR

CREEK BEACH MASSING PLAN



FLOOR PLAN 1. All dimensions are in imperial and metric, and measured from finish to finish excluding construction tolerances. 2. All materials, dimensions, and drawings are approximate only. 3. Information is subject to change without notice, at developer's absolute discretion. 4. Actual area may vary from the stated area. 5. Drawings not to scale. 6. All images used are for illustrative purposes only and do not represent the actual size, features, specifications, fittings, and furnishings. 7. The developer reserves the right to make revisions / alterations, at it's absolute discretion, without any liability whatsoever.

CEDAR
CREEK BEACH
MASSING PLAN



FLOOR PLAN 1. All dimensions are in imperial and metric, and measured from finish to finish excluding construction tolerances. 2. All materials, dimensions, and drawings are approximate only. 3. Information is subject to change without notice, at developer's absolute discretion. 4. Actual area may vary from the stated area. 5. Drawings not to scale. 6. All images used are for illustrative purposes only and do not represent the actual size, features, specifications, fittings, and furnishings. 7. The developer reserves the right to make revisions / alterations, at it's absolute discretion, without any liability whatsoever.

DUBAI CREEK HARBOUR

CEDAR

CREEK BEACH

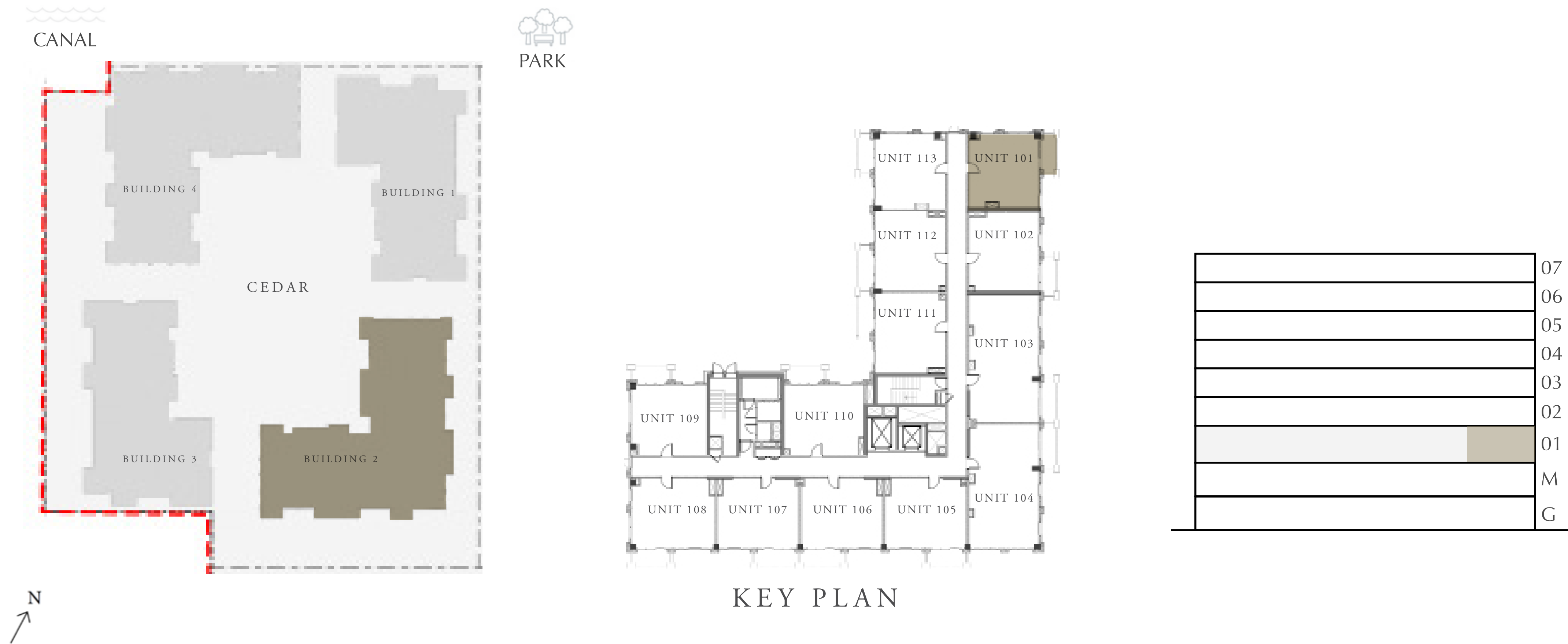
BUILDING 2

1 BEDROOM

LEVEL 1

UNIT 101

APARTMENT AREA	548.31 SQ.FT.	50.94 SQ.M.
BALCONY AREA	64.37 SQ.FT.	5.98 SQ.M.
TOTAL AREA	612.68 SQ.FT.	56.92 SQ.M.



FLOOR PLAN 1. All dimensions are in imperial and metric, and measured from finish to finish excluding construction tolerances. 2. All materials, dimensions, and drawings are approximate only. 3. Information is subject to change without notice, at developer's absolute discretion. 4. Actual area may vary from the stated area. 5. Drawings not to scale. 6. All images used are for illustrative purposes only and do not represent the actual size, features, specifications, fittings, and furnishings. 7. The developer reserves the right to make revisions / alterations, at it's absolute discretion, without any liability whatsoever.

DUBAI CREEK HARBOUR

CEDAR

CREEK BEACH

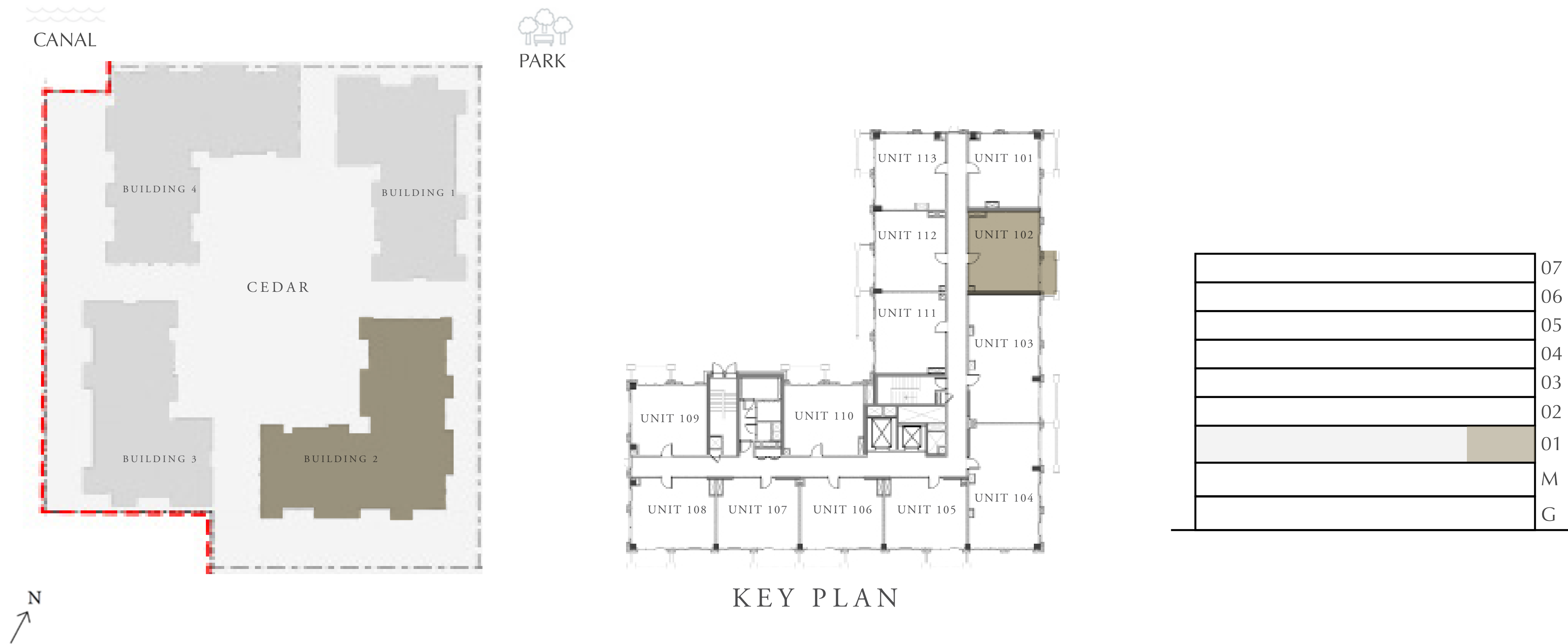
BUILDING 2

1 BEDROOM

LEVEL 1

UNIT 102

APARTMENT AREA	594.17 SQ.FT.	55.20 SQ.M.
BALCONY AREA	65.12 SQ.FT.	6.05 SQ.M.
TOTAL AREA	659.29 SQ.FT.	61.25 SQ.M.



FLOOR PLAN 1. All dimensions are in imperial and metric, and measured from finish to finish excluding construction tolerances. 2. All materials, dimensions, and drawings are approximate only. 3. Information is subject to change without notice, at developer's absolute discretion. 4. Actual area may vary from the stated area. 5. Drawings not to scale. 6. All images used are for illustrative purposes only and do not represent the actual size, features, specifications, fittings, and furnishings. 7. The developer reserves the right to make revisions / alterations, at it's absolute discretion, without any liability whatsoever.

DUBAI CREEK HARBOUR

CEDAR

CREEK BEACH

BUILDING 2

2 BEDROOM

LEVEL 1

UNIT 103

APARTMENT AREA	943.78 SQ.FT.	87.68 SQ.M.
BALCONY AREA	75.67 SQ.FT.	7.03 SQ.M.
TOTAL AREA	1019.45 SQ.FT.	94.71 SQ.M.



FLOOR PLAN 1. All dimensions are in imperial and metric, and measured from finish to finish excluding construction tolerances. 2. All materials, dimensions, and drawings are approximate only. 3. Information is subject to change without notice, at developer's absolute discretion. 4. Actual area may vary from the stated area. 5. Drawings not to scale. 6. All images used are for illustrative purposes only and do not represent the actual size, features, specifications, fittings, and furnishings. 7. The developer reserves the right to make revisions / alterations, at it's absolute discretion, without any liability whatsoever.

DUBAI CREEK HARBOUR

CEDAR

CREEK BEACH

BUILDING 2

2 BEDROOM

LEVEL 1 UNIT 104

APARTMENT AREA	906.11 SQ.FT.	84.18 SQ.M.
BALCONY AREA	75.67 SQ.FT.	7.03 SQ.M.
TOTAL AREA	981.78 SQ.FT.	91.21 SQ.M.



FLOOR PLAN 1. All dimensions are in imperial and metric, and measured from finish to finish excluding construction tolerances. 2. All materials, dimensions, and drawings are approximate only. 3. Information is subject to change without notice, at developer's absolute discretion. 4. Actual area may vary from the stated area. 5. Drawings not to scale. 6. All images used are for illustrative purposes only and do not represent the actual size, features, specifications, fittings, and furnishings. 7. The developer reserves the right to make revisions / alterations, at it's absolute discretion, without any liability whatsoever.

DUBAI CREEK HARBOUR

CEDAR

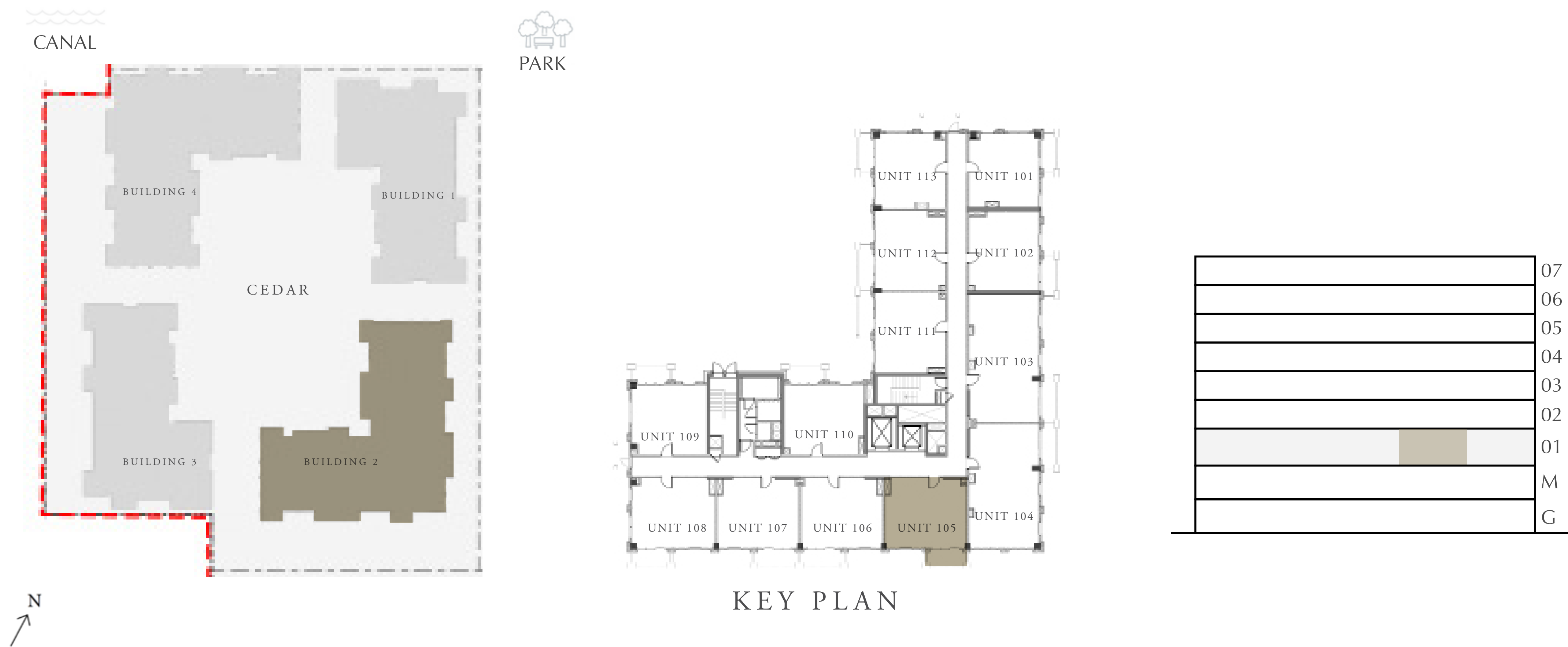
CREEK BEACH

BUILDING 2

1 BEDROOM

LEVEL 1 UNIT 105

APARTMENT AREA	596.64 SQ.FT.	55.43 SQ.M.
BALCONY AREA	67.38 SQ.FT.	6.26 SQ.M.
TOTAL AREA	664.02 SQ.FT.	61.69 SQ.M.



FLOOR PLAN 1. All dimensions are in imperial and metric, and measured from finish to finish excluding construction tolerances. 2. All materials, dimensions, and drawings are approximate only. 3. Information is subject to change without notice, at developer's absolute discretion. 4. Actual area may vary from the stated area. 5. Drawings not to scale. 6. All images used are for illustrative purposes only and do not represent the actual size, features, specifications, fittings, and furnishings. 7. The developer reserves the right to make revisions / alterations, at it's absolute discretion, without any liability whatsoever.

DUBAI CREEK HARBOUR

CEDAR

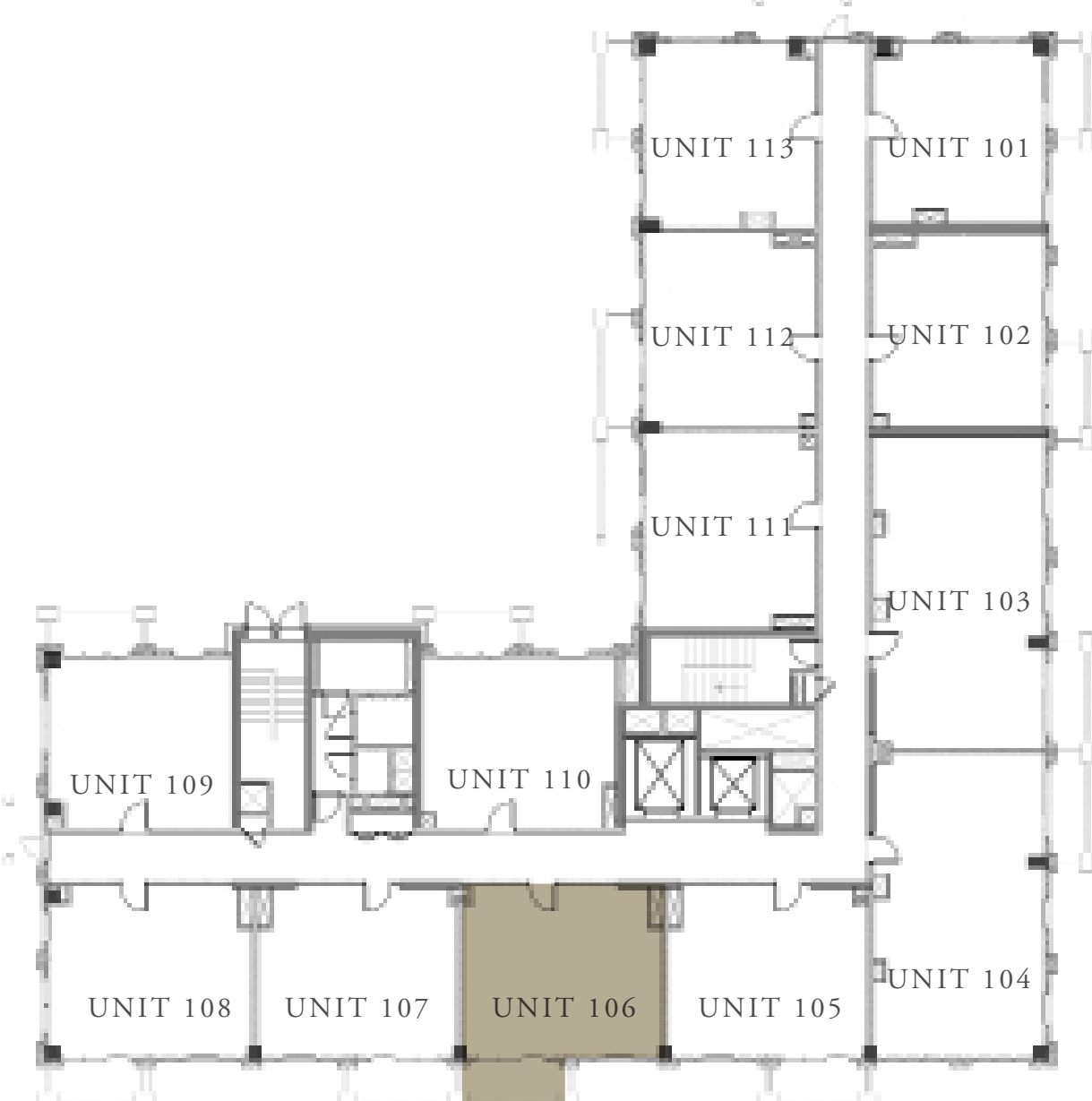
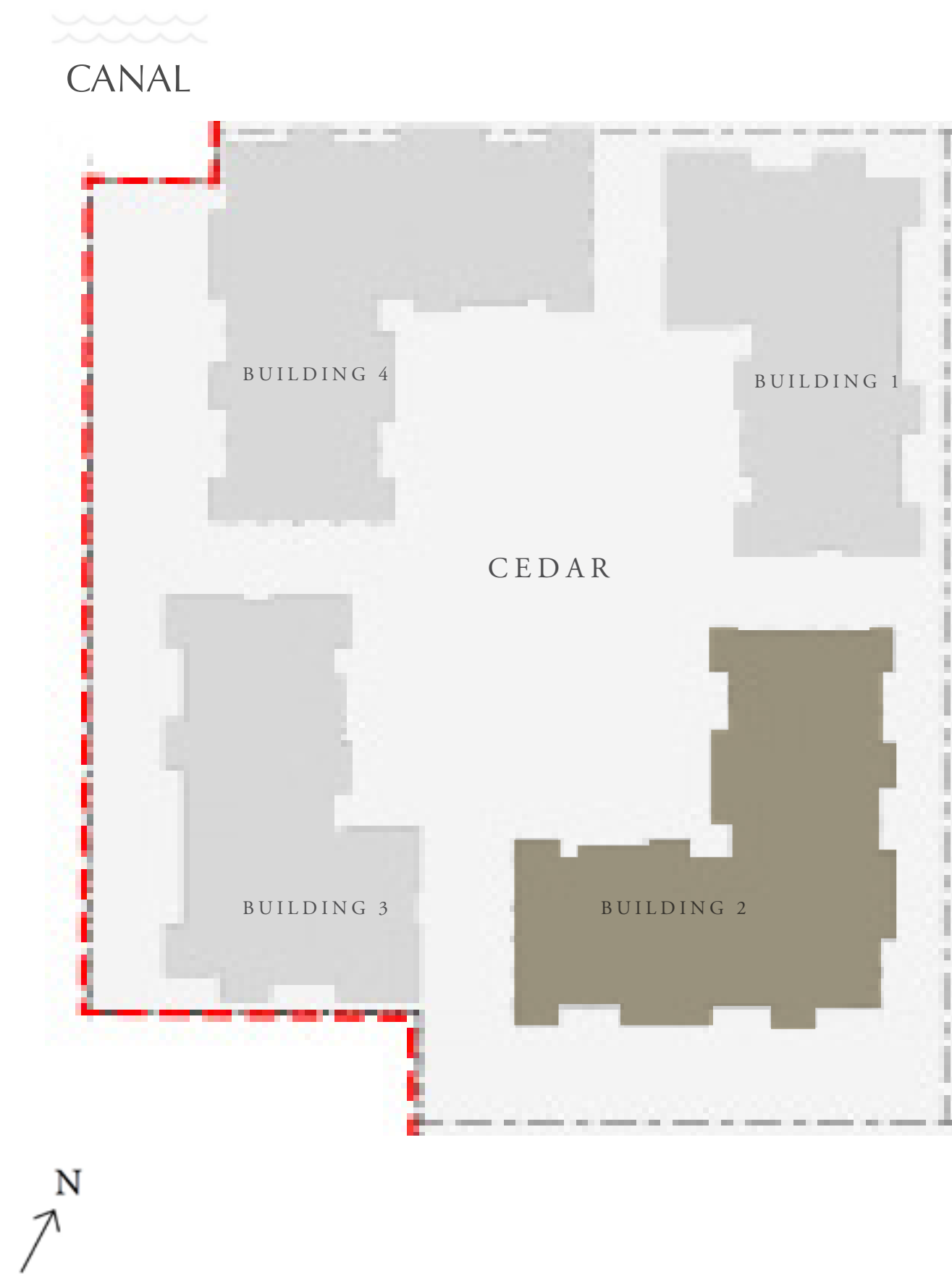
CREEK BEACH

BUILDING 2

1 BEDROOM

LEVEL 1 UNIT 106

APARTMENT AREA	599.33 SQ.FT.	55.68 SQ.M.
BALCONY AREA	75.67 SQ.FT.	7.03 SQ.M.
TOTAL AREA	675.00 SQ.FT.	62.71 SQ.M.



KEY PLAN

	07
	06
	05
	04
	03
	02
	01
	M
	G



FLOOR PLAN 1. All dimensions are in imperial and metric, and measured from finish to finish excluding construction tolerances. 2. All materials, dimensions, and drawings are approximate only. 3. Information is subject to change without notice, at developer's absolute discretion. 4. Actual area may vary from the stated area. 5. Drawings not to scale. 6. All images used are for illustrative purposes only and do not represent the actual size, features, specifications, fittings, and furnishings. 7. The developer reserves the right to make revisions / alterations, at it's absolute discretion, without any liability whatsoever.

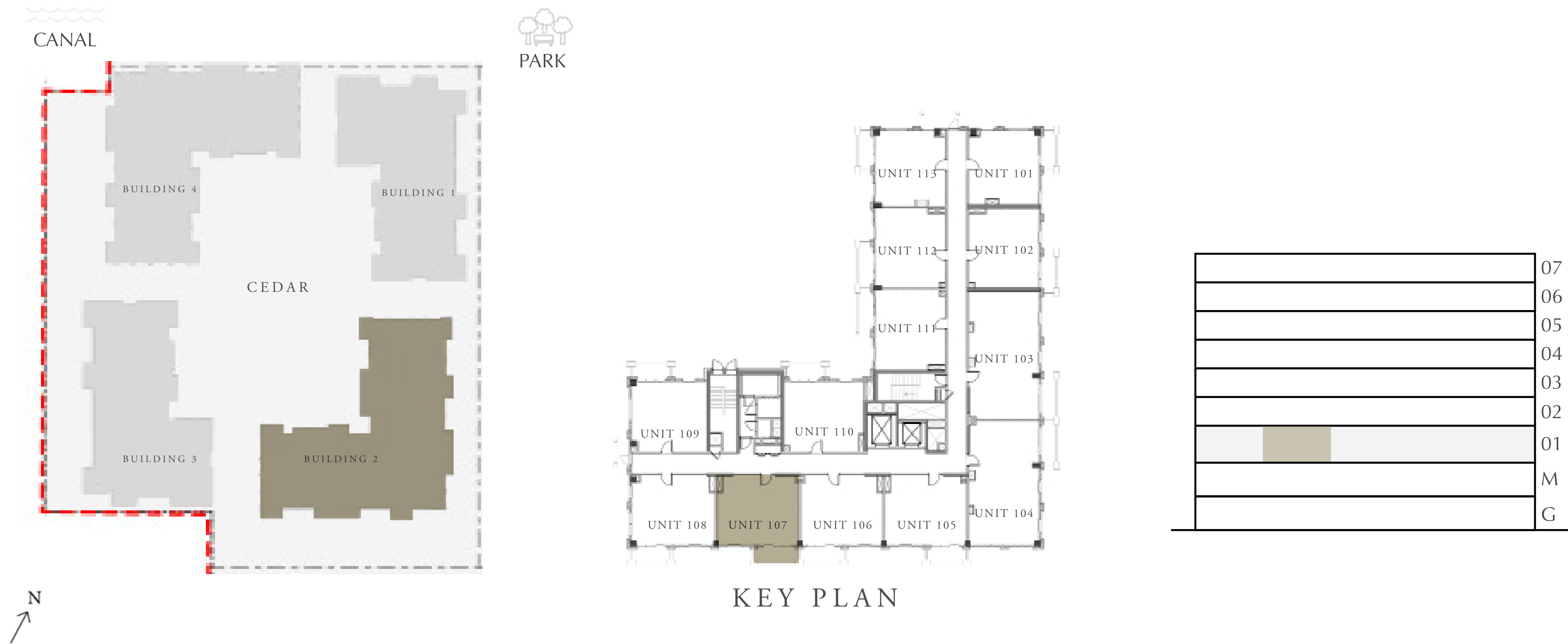
DUBAI CREEK HARBOUR

CEDAR
CREEK BEACH

BUILDING 2
1 BEDROOM

LEVEL 1 UNIT 107

APARTMENT AREA	598.37 SQ.FT.	55.59 SQ.M.
BALCONY AREA	75.67 SQ.FT.	7.03 SQ.M.
TOTAL AREA	674.04 SQ.FT.	62.62 SQ.M.



FLOOR PLAN 1. All dimensions are in imperial and metric, and measured from finish to finish excluding construction tolerances. 2. All materials, dimensions, and drawings are approximate only. 3. Information is subject to change without notice, at developer's absolute discretion. 4. Actual area may vary from the stated area. 5. Drawings not to scale. 6. All images used are for illustrative purposes only and do not represent the actual size, features, specifications, fittings, and furnishings. 7. The developer reserves the right to make revisions / alterations, at it's absolute discretion, without any liability whatsoever.

DUBAI CREEK HARBOUR

CEDAR

CREEK BEACH

BUILDING 2

1 BEDROOM

LEVEL 1 UNIT 108

APARTMENT AREA	610.21 SQ.FT.	56.69 SQ.M.
BALCONY AREA	66.74 SQ.FT.	6.20 SQ.M.
TOTAL AREA	676.95 SQ.FT.	62.89 SQ.M.



FLOOR PLAN 1. All dimensions are in imperial and metric, and measured from finish to finish excluding construction tolerances. 2. All materials, dimensions, and drawings are approximate only. 3. Information is subject to change without notice, at developer's absolute discretion. 4. Actual area may vary from the stated area. 5. Drawings not to scale. 6. All images used are for illustrative purposes only and do not represent the actual size, features, specifications, fittings, and furnishings. 7. The developer reserves the right to make revisions / alterations, at it's absolute discretion, without any liability whatsoever.

DUBAI CREEK HARBOUR

CEDAR

CREEK BEACH

BUILDING 2

1 BEDROOM

LEVEL 1

UNIT 109

APARTMENT AREA	555.09 SQ.FT.	51.57 SQ.M.
BALCONY AREA	64.37 SQ.FT.	5.98 SQ.M.
TOTAL AREA	619.46 SQ.FT.	57.55 SQ.M.



FLOOR PLAN 1. All dimensions are in imperial and metric, and measured from finish to finish excluding construction tolerances. 2. All materials, dimensions, and drawings are approximate only. 3. Information is subject to change without notice, at developer's absolute discretion. 4. Actual area may vary from the stated area. 5. Drawings not to scale. 6. All images used are for illustrative purposes only and do not represent the actual size, features, specifications, fittings, and furnishings. 7. The developer reserves the right to make revisions / alterations, at it's absolute discretion, without any liability whatsoever.

DUBAI CREEK HARBOUR

CEDAR

CREEK BEACH

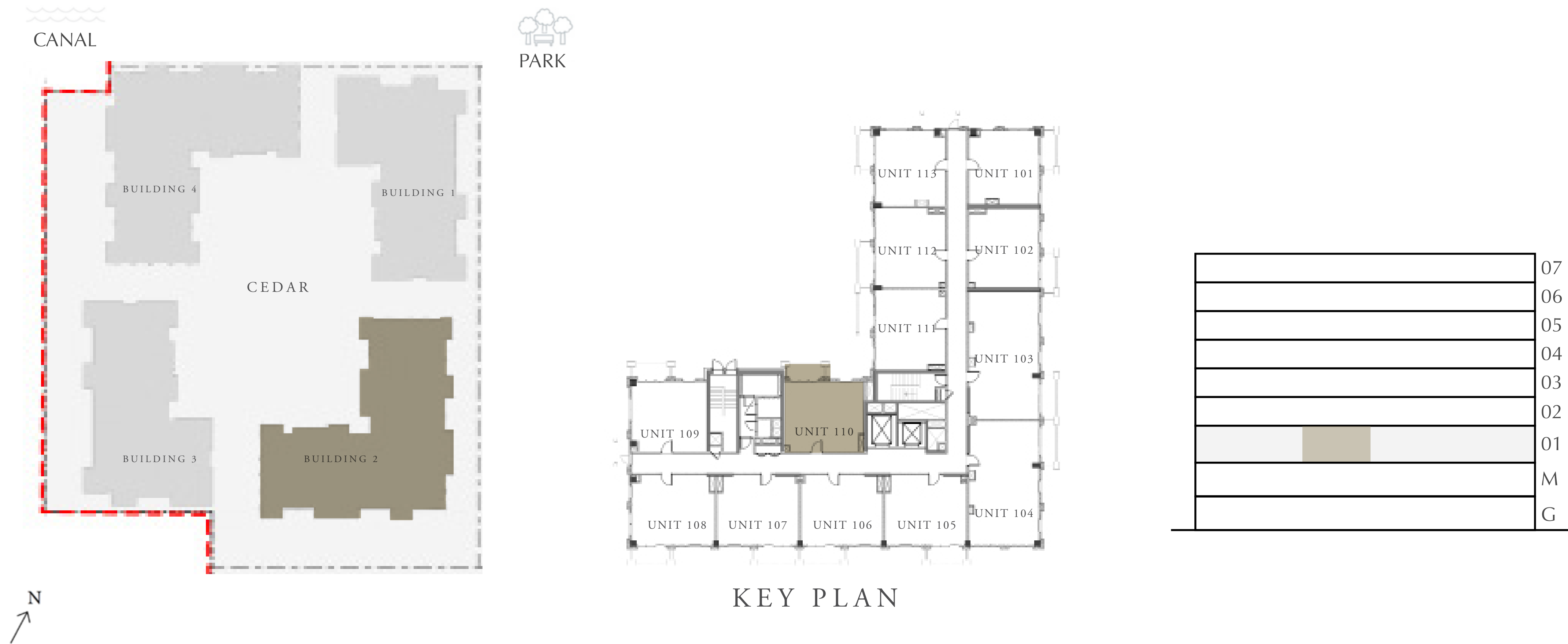
BUILDING 2

1 BEDROOM

LEVEL 1

UNIT 110

APARTMENT AREA	591.37 SQ.FT.	54.94 SQ.M.
BALCONY AREA	64.69 SQ.FT.	6.01 SQ.M.
TOTAL AREA	656.06 SQ.FT.	60.95 SQ.M.



FLOOR PLAN 1. All dimensions are in imperial and metric, and measured from finish to finish excluding construction tolerances. 2. All materials, dimensions, and drawings are approximate only. 3. Information is subject to change without notice, at developer's absolute discretion. 4. Actual area may vary from the stated area. 5. Drawings not to scale. 6. All images used are for illustrative purposes only and do not represent the actual size, features, specifications, fittings, and furnishings. 7. The developer reserves the right to make revisions / alterations, at it's absolute discretion, without any liability whatsoever.

DUBAI CREEK HARBOUR

CEDAR

CREEK BEACH

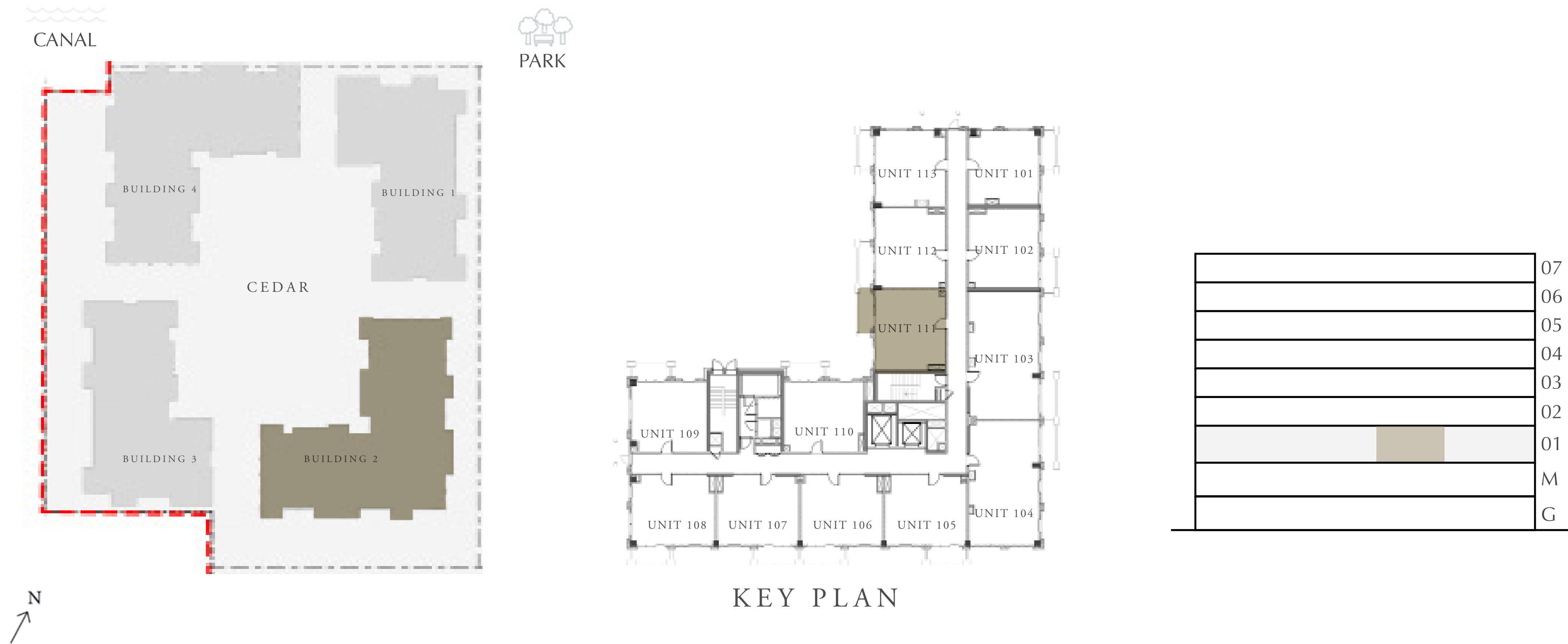
BUILDING 2

1 BEDROOM

LEVEL 1

UNIT 111

APARTMENT AREA	590.94 SQ.FT.	54.90 SQ.M.
BALCONY AREA	74.49 SQ.FT.	6.92 SQ.M.
TOTAL AREA	665.43 SQ.FT.	61.82 SQ.M.



FLOOR PLAN 1. All dimensions are in imperial and metric, and measured from finish to finish excluding construction tolerances. 2. All materials, dimensions, and drawings are approximate only. 3. Information is subject to change without notice, at developer's absolute discretion. 4. Actual area may vary from the stated area. 5. Drawings not to scale. 6. All images used are for illustrative purposes only and do not represent the actual size, features, specifications, fittings, and furnishings. 7. The developer reserves the right to make revisions / alterations, at it's absolute discretion, without any liability whatsoever.

DUBAI CREEK HARBOUR

CEDAR

CREEK BEACH

BUILDING 2

1 BEDROOM

LEVEL 1

UNIT 112

APARTMENT AREA	588.03 SQ.FT.	54.63 SQ.M.
BALCONY AREA	75.67 SQ.FT.	7.03 SQ.M.
TOTAL AREA	663.70 SQ.FT.	61.66 SQ.M.



FLOOR PLAN 1. All dimensions are in imperial and metric, and measured from finish to finish excluding construction tolerances. 2. All materials, dimensions, and drawings are approximate only. 3. Information is subject to change without notice, at developer's absolute discretion. 4. Actual area may vary from the stated area. 5. Drawings not to scale. 6. All images used are for illustrative purposes only and do not represent the actual size, features, specifications, fittings, and furnishings. 7. The developer reserves the right to make revisions / alterations, at it's absolute discretion, without any liability whatsoever.

DUBAI CREEK HARBOUR

CEDAR

CREEK BEACH

BUILDING 2

1 BEDROOM

LEVEL 1

UNIT 113

APARTMENT AREA	552.62 SQ.FT.	51.34 SQ.M.
BALCONY AREA	64.37 SQ.FT.	5.98 SQ.M.
TOTAL AREA	616.99 SQ.FT.	57.32 SQ.M.



FLOOR PLAN 1. All dimensions are in imperial and metric, and measured from finish to finish excluding construction tolerances. 2. All materials, dimensions, and drawings are approximate only. 3. Information is subject to change without notice, at developer's absolute discretion. 4. Actual area may vary from the stated area. 5. Drawings not to scale. 6. All images used are for illustrative purposes only and do not represent the actual size, features, specifications, fittings, and furnishings. 7. The developer reserves the right to make revisions / alterations, at it's absolute discretion, without any liability whatsoever.

DUBAI CREEK HARBOUR

CEDAR

CREEK BEACH

BUILDING 2

1 BEDROOM

LEVEL 2-7

UNIT 01

APARTMENT AREA	599.01 SQ.FT.	55.65 SQ.M.
BALCONY AREA	65.12 SQ.FT.	6.05 SQ.M.
TOTAL AREA	664.13 SQ.FT.	61.70 SQ.M.



FLOOR PLAN 1. All dimensions are in imperial and metric, and measured from finish to finish excluding construction tolerances. 2. All materials, dimensions, and drawings are approximate only. 3. Information is subject to change without notice, at developer's absolute discretion. 4. Actual area may vary from the stated area. 5. Drawings not to scale. 6. All images used are for illustrative purposes only and do not represent the actual size, features, specifications, fittings, and furnishings. 7. The developer reserves the right to make revisions / alterations, at it's absolute discretion, without any liability whatsoever.

DUBAI CREEK HARBOUR

CEDAR

CREEK BEACH

BUILDING 2

2 BEDROOM

LEVEL 2-7 UNIT 02

APARTMENT AREA	939.80 SQ.FT.	87.31 SQ.M.
BALCONY AREA	75.67 SQ.FT.	7.03 SQ.M.
TOTAL AREA	1015.47 SQ.FT.	94.34 SQ.M.



FLOOR PLAN 1. All dimensions are in imperial and metric, and measured from finish to finish excluding construction tolerances. 2. All materials, dimensions, and drawings are approximate only. 3. Information is subject to change without notice, at developer's absolute discretion. 4. Actual area may vary from the stated area. 5. Drawings not to scale. 6. All images used are for illustrative purposes only and do not represent the actual size, features, specifications, fittings, and furnishings. 7. The developer reserves the right to make revisions / alterations, at it's absolute discretion, without any liability whatsoever.

DUBAI CREEK HARBOUR

CEDAR

CREEK BEACH

BUILDING 2

2 BEDROOM

LEVEL 2-7

UNIT 03

APARTMENT AREA	905.89 SQ.FT.	84.16 SQ.M.
BALCONY AREA	75.67 SQ.FT.	7.03 SQ.M.
TOTAL AREA	981.56 SQ.FT.	91.19 SQ.M.



FLOOR PLAN 1. All dimensions are in imperial and metric, and measured from finish to finish excluding construction tolerances. 2. All materials, dimensions, and drawings are approximate only. 3. Information is subject to change without notice, at developer's absolute discretion. 4. Actual area may vary from the stated area. 5. Drawings not to scale. 6. All images used are for illustrative purposes only and do not represent the actual size, features, specifications, fittings, and furnishings. 7. The developer reserves the right to make revisions / alterations, at it's absolute discretion, without any liability whatsoever.

DUBAI CREEK HARBOUR

CEDAR

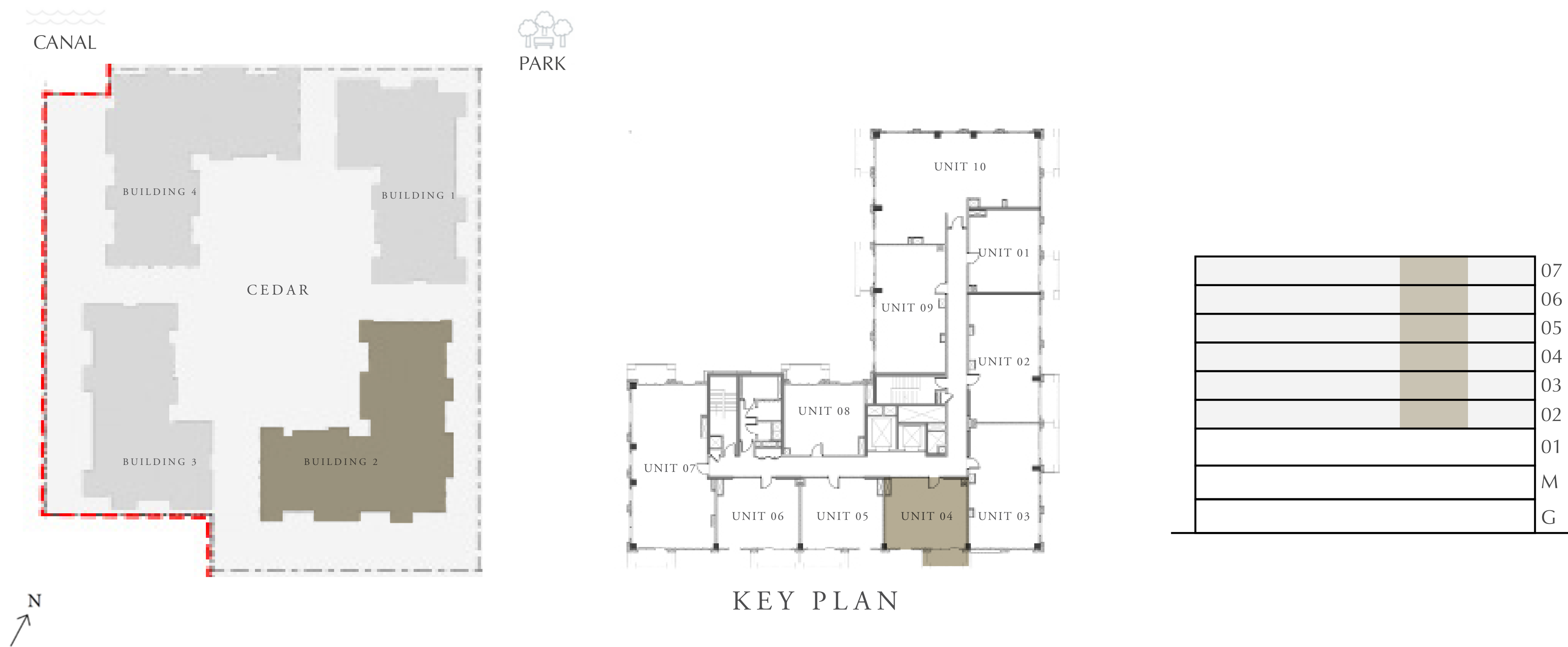
CREEK BEACH

BUILDING 2

1 BEDROOM

LEVEL 2-7 UNIT 04

APARTMENT AREA	596.43 SQ.FT.	55.41 SQ.M.
BALCONY AREA	67.38 SQ.FT.	6.26 SQ.M.
TOTAL AREA	663.81 SQ.FT.	61.67 SQ.M.



FLOOR PLAN 1. All dimensions are in imperial and metric, and measured from finish to finish excluding construction tolerances. 2. All materials, dimensions, and drawings are approximate only. 3. Information is subject to change without notice, at developer's absolute discretion. 4. Actual area may vary from the stated area. 5. Drawings not to scale. 6. All images used are for illustrative purposes only and do not represent the actual size, features, specifications, fittings, and furnishings. 7. The developer reserves the right to make revisions / alterations, at it's absolute discretion, without any liability whatsoever.

DUBAI CREEK HARBOUR

CEDAR

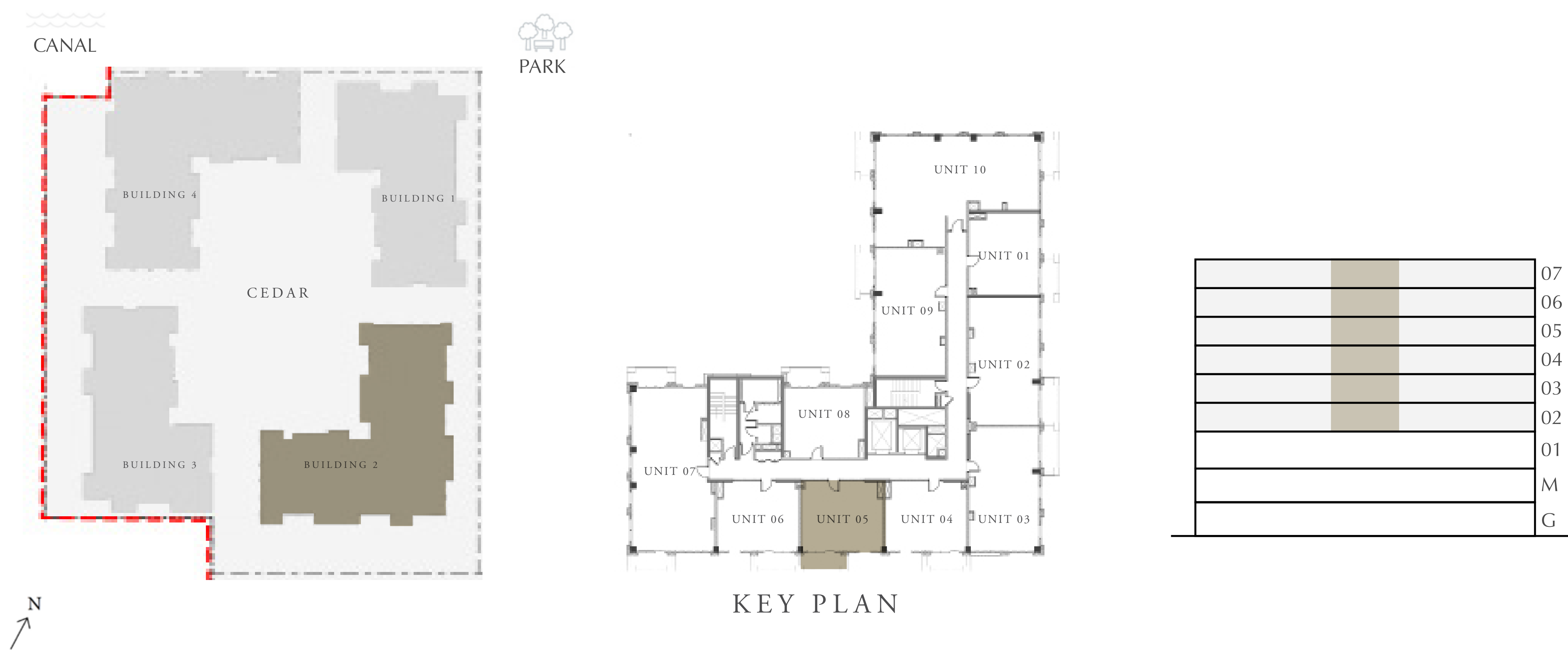
CREEK BEACH

BUILDING 2

1 BEDROOM

LEVEL 2-7 UNIT 05

APARTMENT AREA	599.12 SQ.FT.	55.66 SQ.M.
BALCONY AREA	75.67 SQ.FT.	7.03 SQ.M.
TOTAL AREA	674.79 SQ.FT.	62.69 SQ.M.



DUBAI CREEK HARBOUR

CEDAR

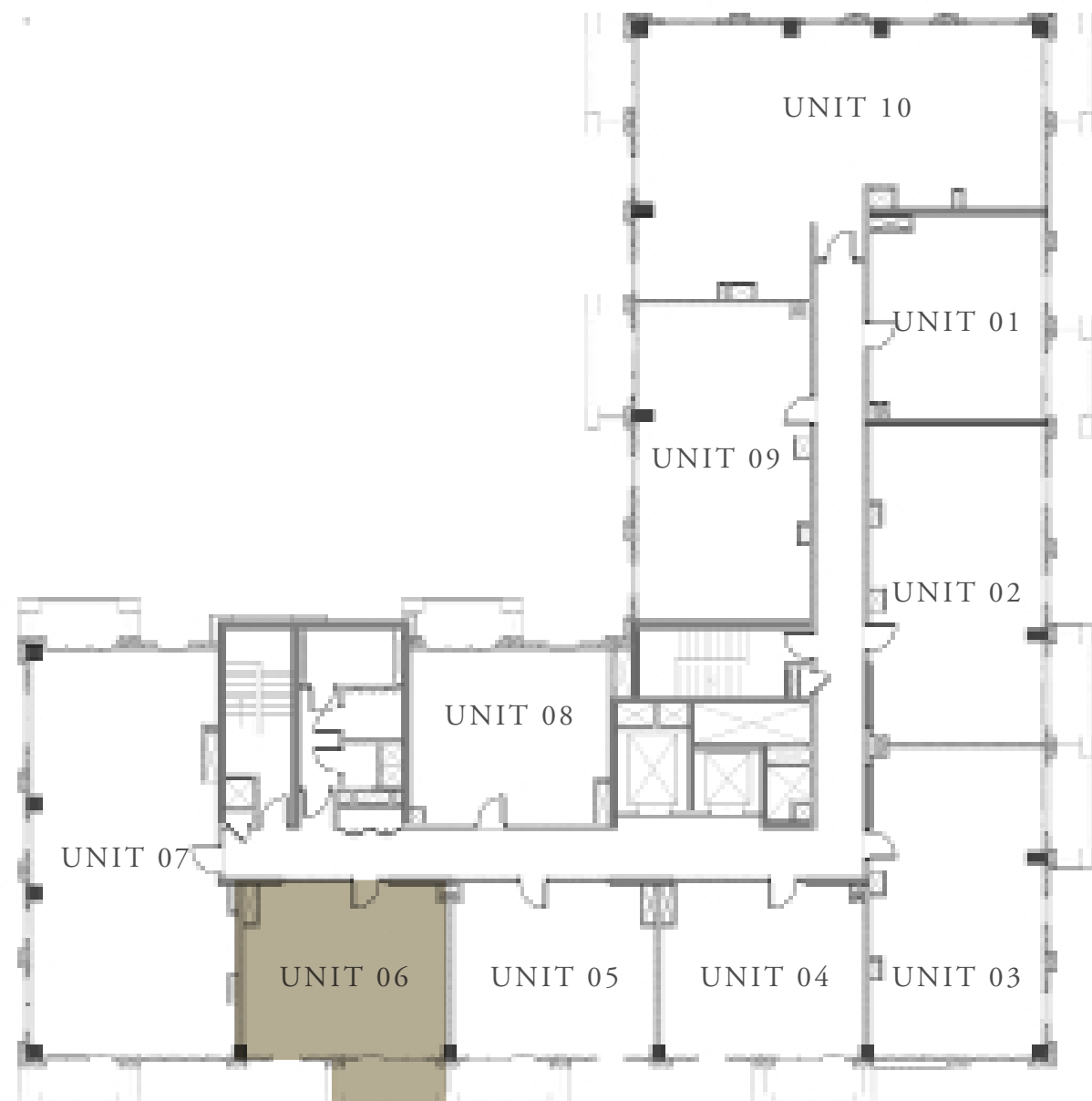
CREEK BEACH

BUILDING 2

1 BEDROOM

LEVEL 2-7 UNIT 06

APARTMENT AREA	598.26 SQ.FT.	55.58 SQ.M.
BALCONY AREA	75.67 SQ.FT.	7.03 SQ.M.
TOTAL AREA	673.93 SQ.FT.	62.61 SQ.M.



KEY PLAN

	07
	06
	05
	04
	03
	02
	01
	M
	G



FLOOR PLAN 1. All dimensions are in imperial and metric, and measured from finish to finish excluding construction tolerances. 2. All materials, dimensions, and drawings are approximate only. 3. Information is subject to change without notice, at developer's absolute discretion. 4. Actual area may vary from the stated area. 5. Drawings not to scale. 6. All images used are for illustrative purposes only and do not represent the actual size, features, specifications, fittings, and furnishings. 7. The developer reserves the right to make revisions / alterations, at it's absolute discretion, without any liability whatsoever.

DUBAI CREEK HARBOUR

CEDAR

CREEK BEACH

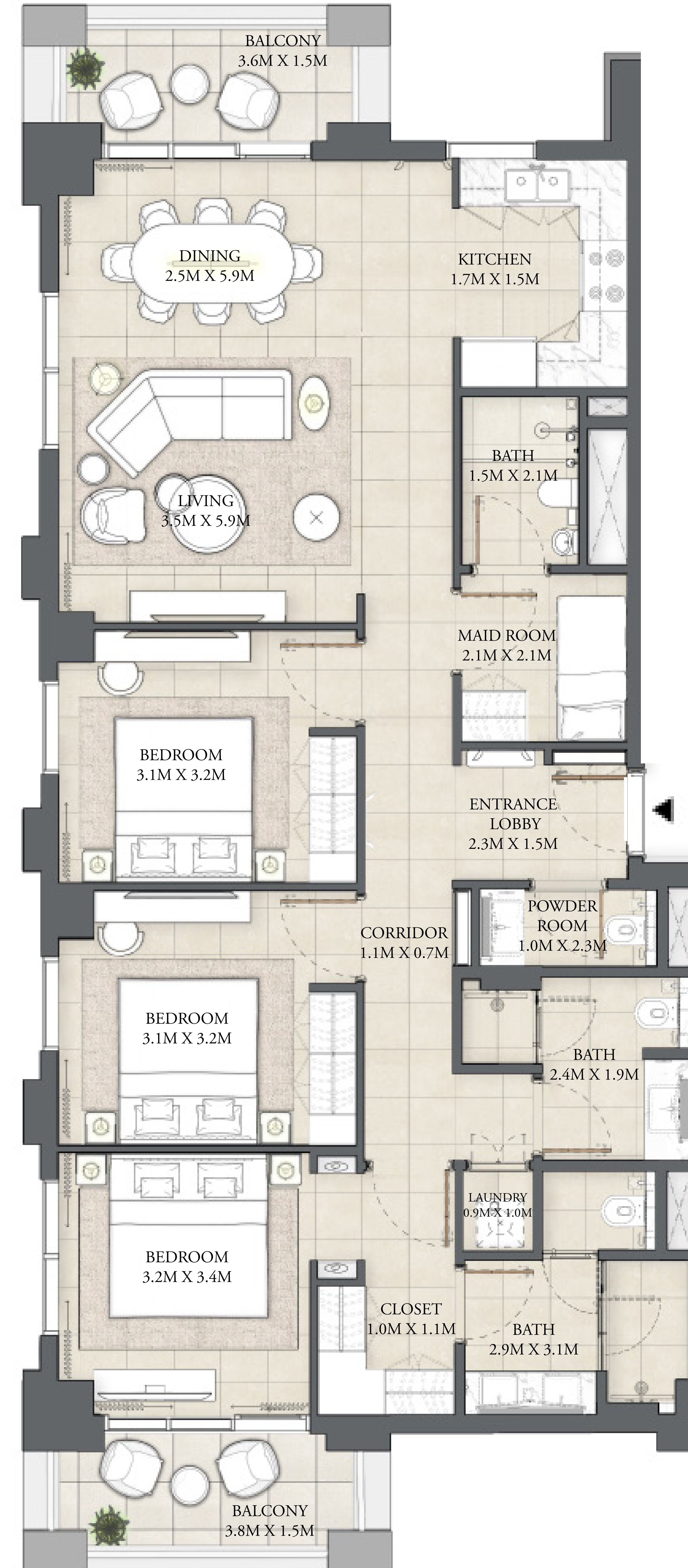
BUILDING 2

3 BEDROOM

LEVEL 2-4

UNIT 07

APARTMENT AREA	1343.77 SQ.FT.	124.84 SQ.M.
BALCONY AREA	131.21 SQ.FT.	12.19 SQ.M.
TOTAL AREA	1474.98 SQ.FT.	137.03 SQ.M.



FLOOR PLAN 1. All dimensions are in imperial and metric, and measured from finish to finish excluding construction tolerances. 2. All materials, dimensions, and drawings are approximate only. 3. Information is subject to change without notice, at developer's absolute discretion. 4. Actual area may vary from the stated area. 5. Drawings not to scale. 6. All images used are for illustrative purposes only and do not represent the actual size, features, specifications, fittings, and furnishings. 7. The developer reserves the right to make revisions / alterations, at it's absolute discretion, without any liability whatsoever.

DUBAI CREEK HARBOUR

CEDAR

CREEK BEACH

BUILDING 2

3 BEDROOM

LEVEL 5-7

UNIT 07

APARTMENT AREA	1343.77 SQ.FT.	124.84 SQ.M.
BALCONY AREA	131.75 SQ.FT.	12.24 SQ.M.
TOTAL AREA	1475.52 SQ.FT.	137.08 SQ.M.



FLOOR PLAN 1. All dimensions are in imperial and metric, and measured from finish to finish excluding construction tolerances. 2. All materials, dimensions, and drawings are approximate only. 3. Information is subject to change without notice, at developer's absolute discretion. 4. Actual area may vary from the stated area. 5. Drawings not to scale. 6. All images used are for illustrative purposes only and do not represent the actual size, features, specifications, fittings, and furnishings. 7. The developer reserves the right to make revisions / alterations, at it's absolute discretion, without any liability whatsoever.

DUBAI CREEK HARBOUR

CEDAR
CREEK BEACH

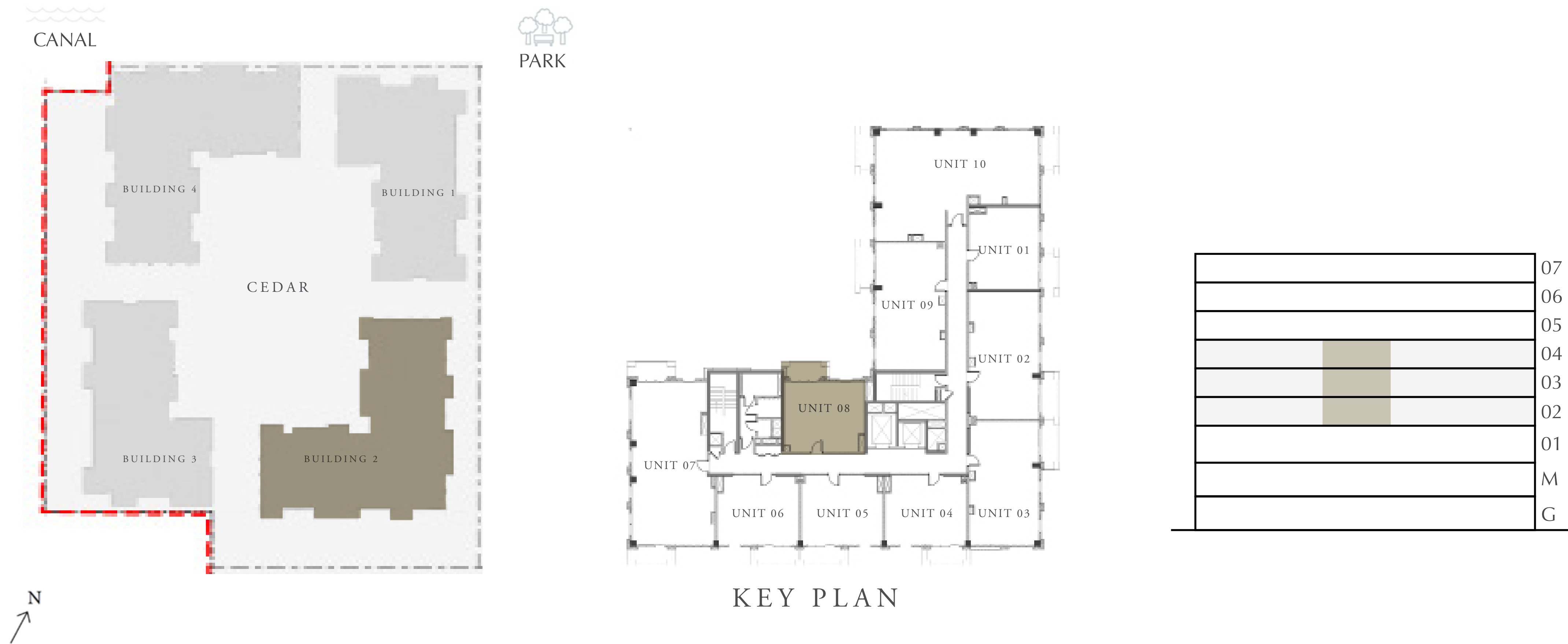
BUILDING 2

1 BEDROOM

LEVEL 2-4

UNIT 08

APARTMENT AREA	592.98 SQ.FT.	55.09 SQ.M.
BALCONY AREA	64.69 SQ.FT.	6.01 SQ.M.
TOTAL AREA	657.67 SQ.FT.	61.10 SQ.M.



FLOOR PLAN 1. All dimensions are in imperial and metric, and measured from finish to finish excluding construction tolerances. 2. All materials, dimensions, and drawings are approximate only. 3. Information is subject to change without notice, at developer's absolute discretion. 4. Actual area may vary from the stated area. 5. Drawings not to scale. 6. All images used are for illustrative purposes only and do not represent the actual size, features, specifications, fittings, and furnishings. 7. The developer reserves the right to make revisions / alterations, at it's absolute discretion, without any liability whatsoever.

DUBAI CREEK HARBOUR

CEDAR

CREEK BEACH

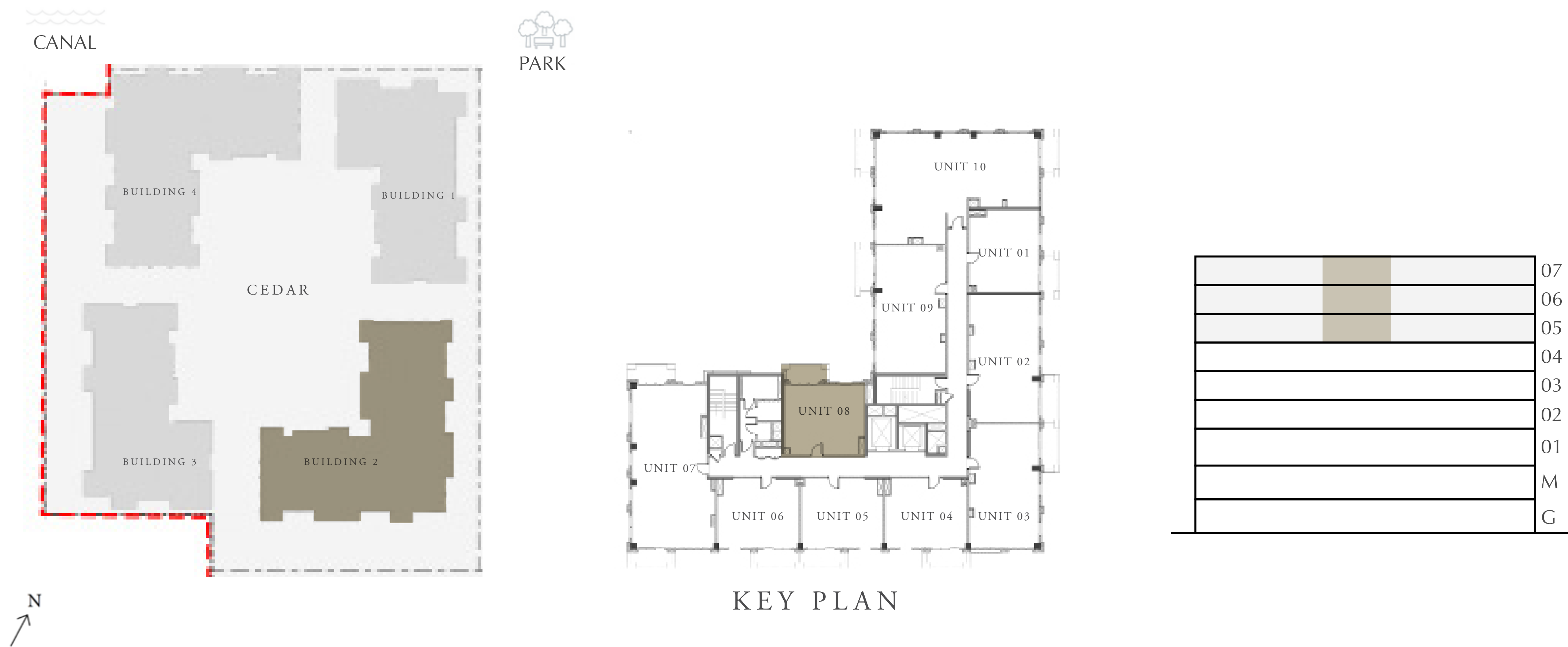
BUILDING 2

1 BEDROOM

LEVEL 5-7

UNIT 08

APARTMENT AREA	592.98 SQ.FT.	55.09 SQ.M.
BALCONY AREA	65.44 SQ.FT.	6.08 SQ.M.
TOTAL AREA	658.42 SQ.FT.	61.17 SQ.M.



FLOOR PLAN 1. All dimensions are in imperial and metric, and measured from finish to finish excluding construction tolerances. 2. All materials, dimensions, and drawings are approximate only. 3. Information is subject to change without notice, at developer's absolute discretion. 4. Actual area may vary from the stated area. 5. Drawings not to scale. 6. All images used are for illustrative purposes only and do not represent the actual size, features, specifications, fittings, and furnishings. 7. The developer reserves the right to make revisions / alterations, at it's absolute discretion, without any liability whatsoever.

DUBAI CREEK HARBOUR

CEDAR

CREEK BEACH

BUILDING 2

2 BEDROOM

LEVEL 2-7 UNIT 09

APARTMENT AREA	938.94 SQ.FT.	87.23 SQ.M.
BALCONY AREA	77.72 SQ.FT.	7.22 SQ.M.
TOTAL AREA	1016.66 SQ.FT.	94.45 SQ.M.



FLOOR PLAN 1. All dimensions are in imperial and metric, and measured from finish to finish excluding construction tolerances. 2. All materials, dimensions, and drawings are approximate only. 3. Information is subject to change without notice, at developer's absolute discretion. 4. Actual area may vary from the stated area. 5. Drawings not to scale. 6. All images used are for illustrative purposes only and do not represent the actual size, features, specifications, fittings, and furnishings. 7. The developer reserves the right to make revisions / alterations, at it's absolute discretion, without any liability whatsoever.

DUBAI CREEK HARBOUR

CEDAR

CREEK BEACH

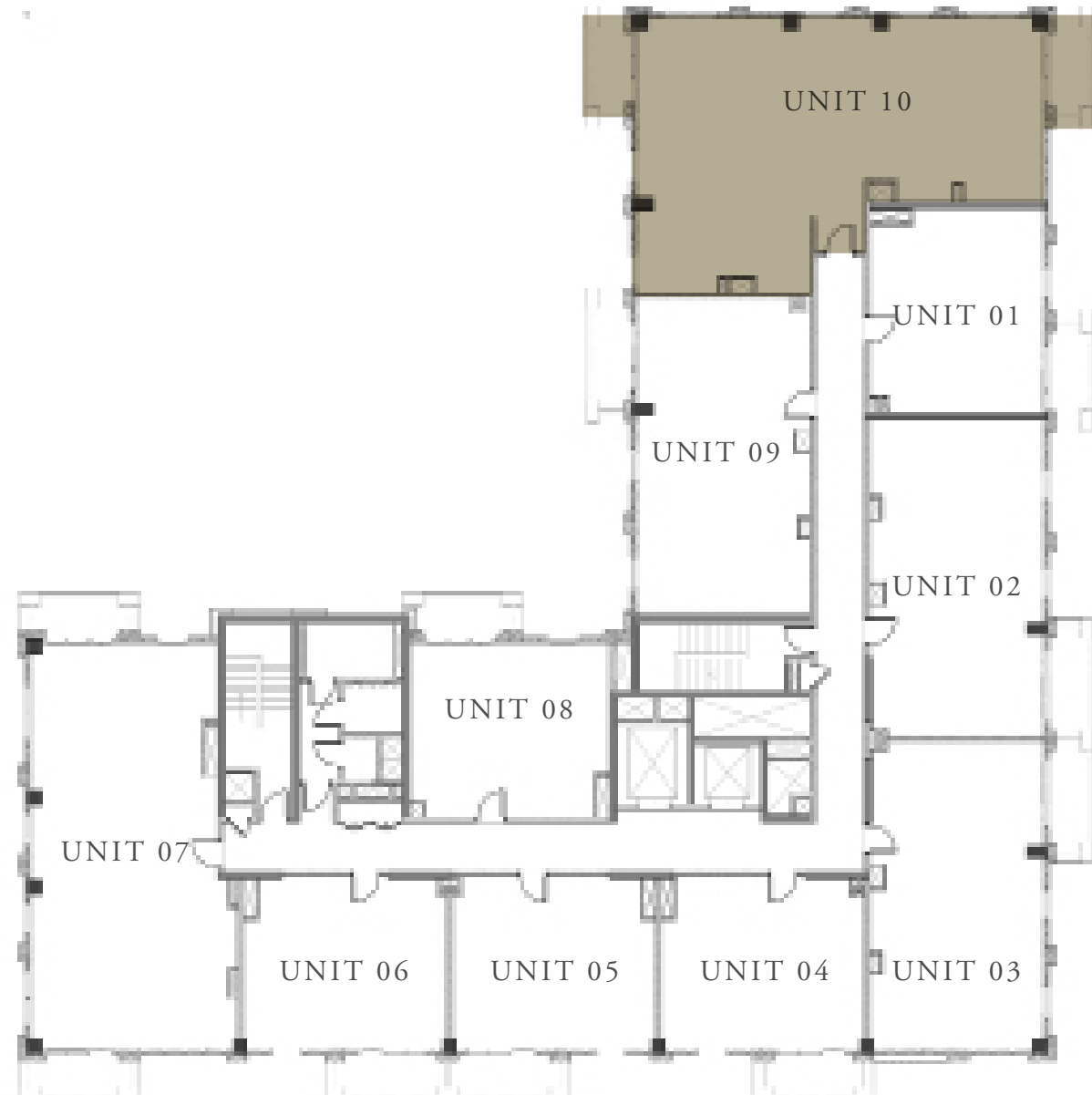
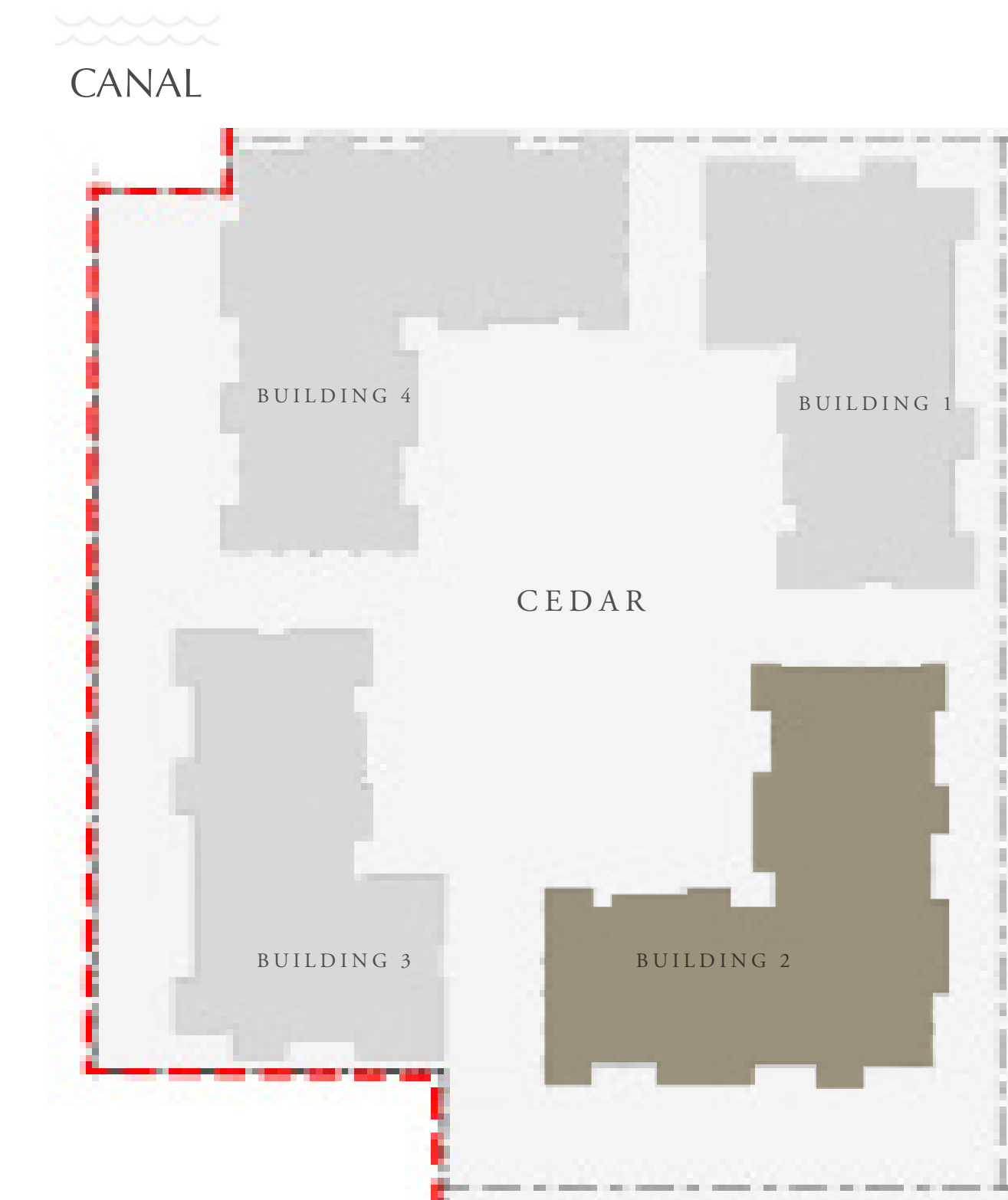
BUILDING 2

3 BEDROOM

LEVEL 2-4

UNIT 10

APARTMENT AREA	1562.06 SQ.FT.	145.12 SQ.M.
BALCONY AREA	128.74 SQ.FT.	11.96 SQ.M.
TOTAL AREA	1690.80 SQ.FT.	157.08 SQ.M.



KEY PLAN

	07
	06
	05
	04
	03
	02
	01
	M
	G

FLOOR PLAN 1. All dimensions are in imperial and metric, and measured from finish to finish excluding construction tolerances. 2. All materials, dimensions, and drawings are approximate only. 3. Information is subject to change without notice, at developer's absolute discretion. 4. Actual area may vary from the stated area. 5. Drawings not to scale. 6. All images used are for illustrative purposes only and do not represent the actual size, features, specifications, fittings, and furnishings. 7. The developer reserves the right to make revisions / alterations, at it's absolute discretion, without any liability whatsoever.

DUBAI CREEK HARBOUR

CEDAR

CREEK BEACH

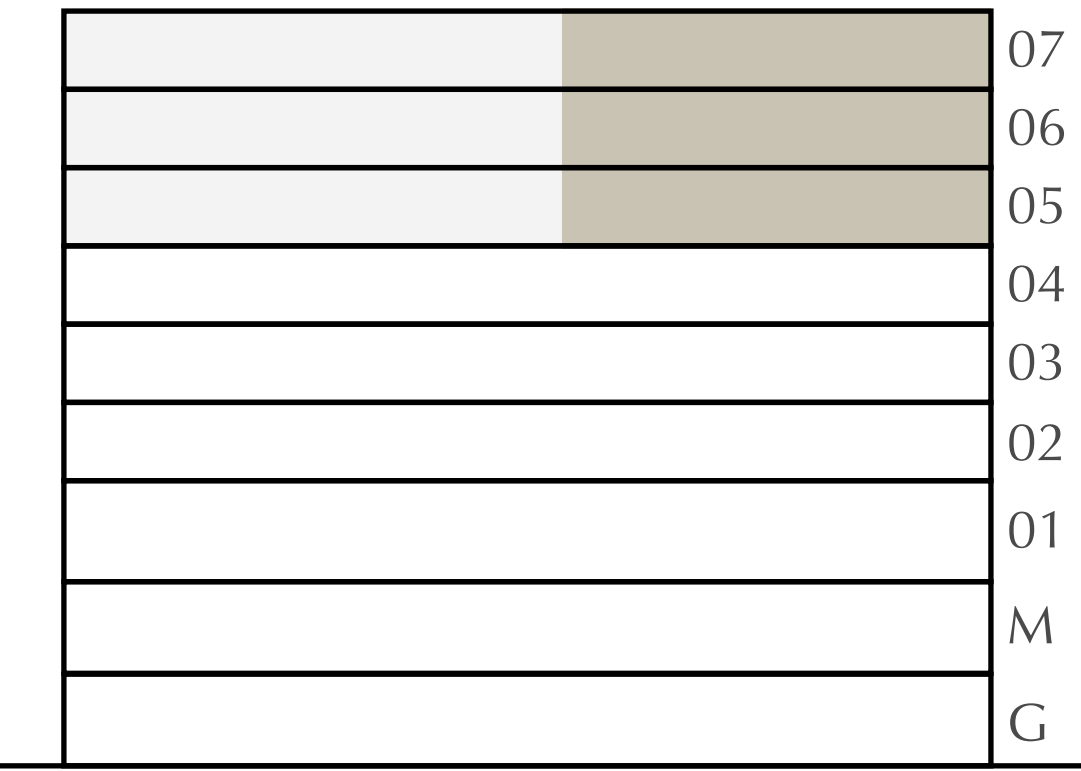
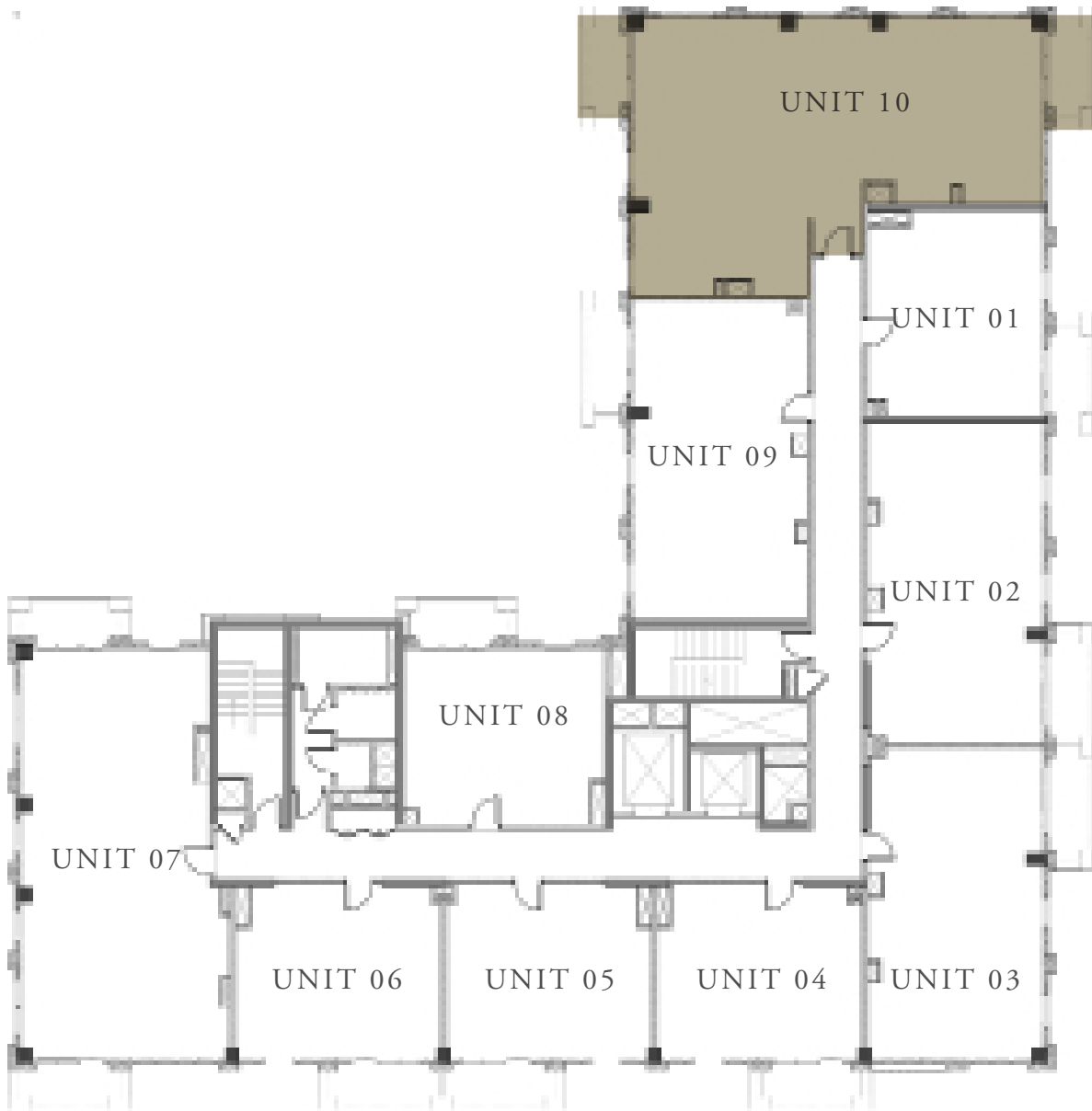
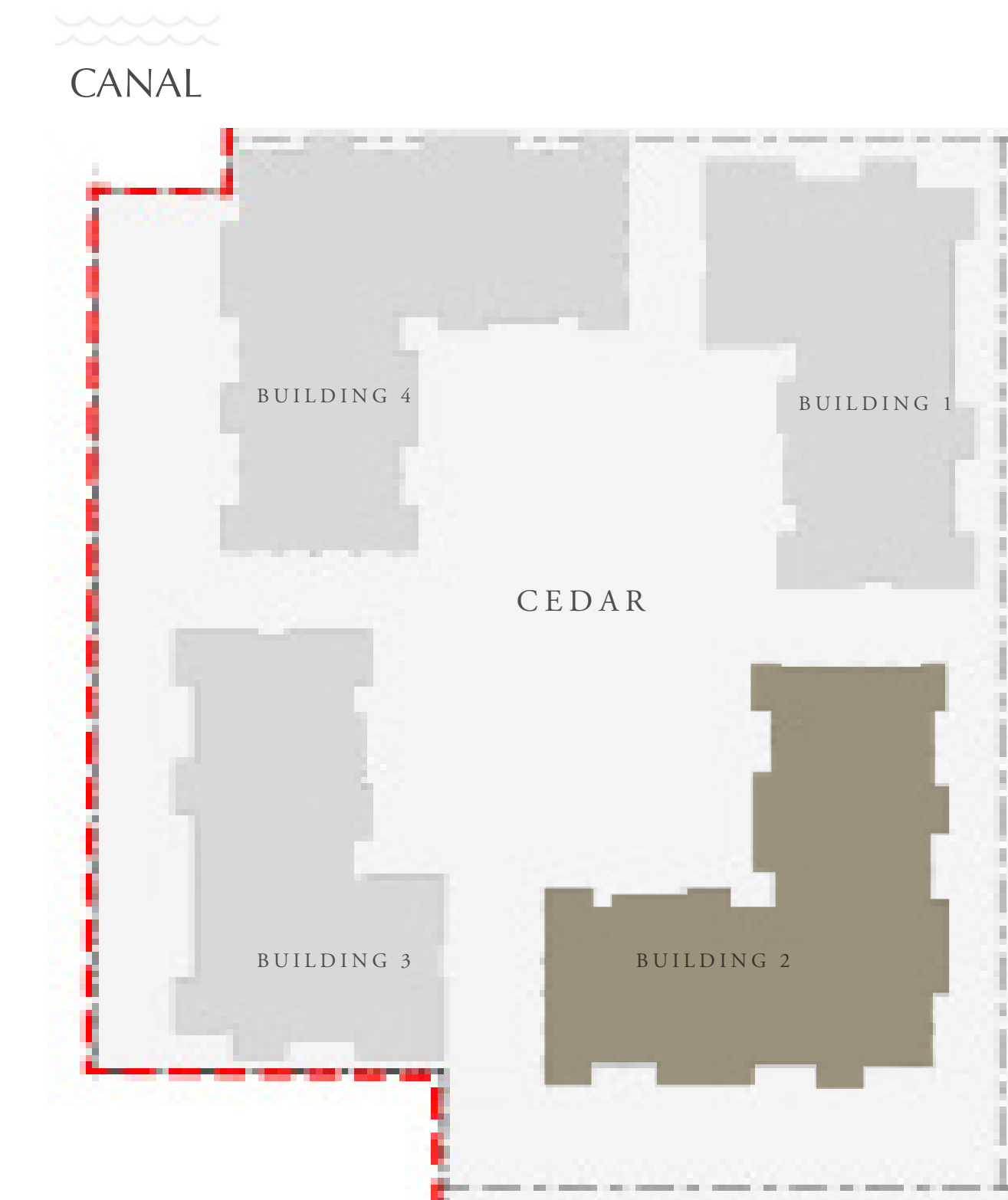
BUILDING 2

3 BEDROOM

LEVEL 5-7

UNIT 10

APARTMENT AREA	1562.06 SQ.FT.	145.12 SQ.M.
BALCONY AREA	129.38 SQ.FT.	12.02 SQ.M.
TOTAL AREA	1691.44 SQ.FT.	157.14 SQ.M.



KEY PLAN

FLOOR PLAN 1. All dimensions are in imperial and metric, and measured from finish to finish excluding construction tolerances. 2. All materials, dimensions, and drawings are approximate only. 3. Information is subject to change without notice, at developer's absolute discretion. 4. Actual area may vary from the stated area. 5. Drawings not to scale. 6. All images used are for illustrative purposes only and do not represent the actual size, features, specifications, fittings, and furnishings. 7. The developer reserves the right to make revisions / alterations, at it's absolute discretion, without any liability whatsoever.